

2024

SMB Solutions Directory

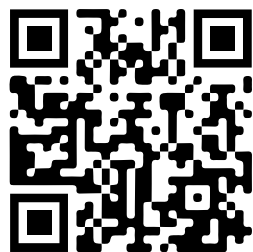
SUBSCRIBE NOW
SUBSCRIBE NOW
SUBSCRIBE NOW
SUBSCRIBE NOW
SUBSCRIBE NOW
SUBSCRIBE NOW
SUBSCRIBE NOW

TechChannel

Make well-informed technology
business decisions for your organization

Earn the greatest return on your
technology investment

Stay up to date with the latest IT trends
and technology announcements



Subscribe at
TechChannel.com/Subscriptions

TechChannel

TechChannel.com

953 Westgate Drive, Suite 107
St. Paul, MN USA 55114
612-339-7571

Publishing Director
Mari Adamson-Bray

Senior Strategic Sales Manager
Lisa F. Kilwein

**Marketing and Business
Development Manager**
Arin Seeger

Partner Success Manager
Chloe Pemberton

Editor-in-Chief
Evelyn Hoover

Managing Editor
Emma Pitzl

Art Directors
Kelsey Hanscom
Mike Kooiman

Audience Development
Chris Birkholm
Hannah Johnson

Webinars
Janine Donnelly, Director
Melissa Kusilek, Manager

Subscriptions:
TechChannel.com/Subscriptions

Content inquiries:
epitzl@techchannel.com

Sales and Marketing inquiries:
lkilwein@techchannel.com

Copyright 2024 by MSPC,
a division of MSP Communications.

mSPC

EDITOR'S LETTER

TechChannel

Staying Ahead of Constant Innovation

2023 WAS A YEAR OF CONSTANT CHANGE AND INNOVATION in the tech industry, and 2024 is showing no signs of slowing down. From the proliferation of generative artificial intelligence and quantum computing to growing concerns about cybersecurity and data privacy, businesses now have more factors than ever to consider when making decisions about technology investments.

The constantly changing tech landscape means our coverage is always changing, as well—from the topics we cover to the ways we deliver content.

One of the biggest changes you'll notice from us in 2024 will be a redesigned TechChannel.com. The website will have powerful search capabilities, streamlined navigation, and a more modern look and feel that reflects the nature of our content. TechChannel.com will still host the articles, podcasts, videos, webinars and special content presentations you rely on, with an experience that makes relevant content even more accessible.

The newly redesigned website also means it will be easier than ever for you to find the Power Systems hardware, software, accessories and services you need to meet your business needs in our TechChannel 2024 Solutions Directory. Available on our website, via PDF or in print, the 2024 Solutions Directory is a comprehensive guide that features cutting-edge products and services from our partners. We've done the research for you—all you have to do is filter by OS, company or product category to find the right solution for your business.

Amid constant evolution, one thing that won't change is our commitment to serving our audience and partners with expert content, relevant IT solutions, and innovations of our own. Thank you for trusting us as your go-to source for what's next in tech. ■

**ALL THE BEST,
EMMA PITZL
MANAGING EDITOR, TECHCHANNEL**

4 **TRENDS AND INNOVATIONS:**
An Integrated Partner Community Supports IBM i

COMPANY AND PRODUCT LISTINGS

8	ARCAD Software Application Modernization Data Masking	23	imPower Technologies Education	32	Racksquared Data Centers Cloud HA/DR/Backup Managed Service Providers Services/Consulting Systems Management	41	PERSPECTIVE: “What Is an IBM Business Partner, Really?” <i>by Steve Pitcher, Sales Consultant & Security Engineer, Service Express</i>
11	CM First Application Modernization	24	LANSA Application Development Application Modernization Business Intelligence/Analytics EDI	34	Raz-Lee Security Business Intelligence/Analytics Database Security	42	Software Engineering of America Security Systems Management
12	Computer Keys Office Automation and Office Support	25	Logicor Tools and Utilities	36	Real Vision Software Document Imaging	43	Tectrade Application Modernization Cloud Linux on Power
13	DRV Technologies Office Automation and Office Support Systems Management	26	Maxava HA/DR/Backup Systems Management	37	Remain Software Application Development Tools and Utilities	44	TL Ashford Tools and Utilities
15	Dynamic Solutions International HA/DR/Backup	27	Meridian IT Cloud Data Management Managed Service Providers	39	Rocket Software Data Management Modernization	45	PERSPECTIVE: “Take a Deeper Look at Your Software Solutions” <i>by Mike Schuett, Director of Marketing, TL Ashford</i>
16	Flagship Solutions Group Business Intelligence/Analytics Cloud Security	28	Midrange Dynamics North America APIs Application Development Database	40	Service Express Cloud Hardware Managed Services Provider	46	Xorux Performance
17	Fresche Solutions Application Modernization Cloud Compliance/Security HA/DR/Backup Office Automation and Office Support Services/Consulting Web Development	29	ProData Computer Services Application Development				
21	Friedman Corporation ERP	31	Profound Logic APIs Application Development Application Modernization				
22	HarrisData Business Management						

RESOURCES

48 **Solutions Directory Product Spotlight**
49 **IBM i User Group Roundup**
54 **Index By Technology Category**

An Integrated Partner Community Supports IBM i

Business partners and ISVs have supported and strengthened the IBM i ecosystem for the past 35 years

BY EVELYN HOOVER

Ask any 10 people what makes the IBM i ecosystem stand out and you are likely to get 10 different answers. However, the answers will likely fall under common themes with integration at the forefront.

After all, the “i” in “IBM i” stands for integration. The OS provides an integrated database, integrated security features and more. But the integration extends beyond the technology include the vast ecosystem of partners that supports IBM i.

“The partners have been excellent at understanding the value of what IBM i and Power Systems bring, explaining that to customers, helping them to find justification for moving forward,” says Steve Will, IBM Distinguished Engineer and IBM i CTO. “And that’s been crucial to the value of IBM i in the marketplace. Our success only happens because there are solutions on our platform that help people run business and there are business partners

who help those clients move forward and take advantage of it.”

LOYAL AND PASSIONATE IBM i PARTNERS

No matter what type of solution a customer seeks, from an ERP solution to a labeling solution to a hardware upgrade to a modernization solution, to a cybersecurity product, etc., between IBM and the partner community, it’s

available on IBM i. Many of the partners have been on the platform throughout much of its 35-year history.

“I’d say it’s a very loyal ecosystem, to be honest. I mean, you’ve got so many hardware vendors and software vendors and ISVs that have been around seemingly forever,” says Michael Ash, president, TL Ashford. “There’s something for everybody. The expertise on the platform supports the ever-changing business needs.”

Back in 1998, before his 16th birthday, Ash started working at the company his father founded, performing office tasks and listening in on sales and tech support calls. After he graduated college, he really dug in, working with clients, attending conferences and supporting customers. Today he leads the forms labeling company.

If you ask Pete Massiello, former president of iTech Solutions Group, what makes the partner ecosystem unique, he’ll tell you it’s passion. “The business partners are passionate. They’re passionate about the technology, they’re passionate about their customers, they’re passionate about the platform,” he says.

Massiello started working on IBM i (then AS/400) in 1989, shortly after the platform debuted. After helping many companies upgrade their systems, he eventually decided to go into business as a consultant, later becoming a hardware business partner for IBM.

Passion and loyalty are also words Marcel Sarrasin, chief services officer and GM, transformation for Fresche Solutions, uses to describe the partner ecosystem. The customer base relies on the partners to innovate and drive the platform forward. “We’ve got this passionate, loyal business partner ecosystem that loves the platform just as much as the customers do,” he says.

“

Our success only happens because there are solutions on our platform that help people run business and there are business partners who help those clients move forward and take advantage of it.”

—Steve Will, IBM Distinguished Engineer and IBM i CTO

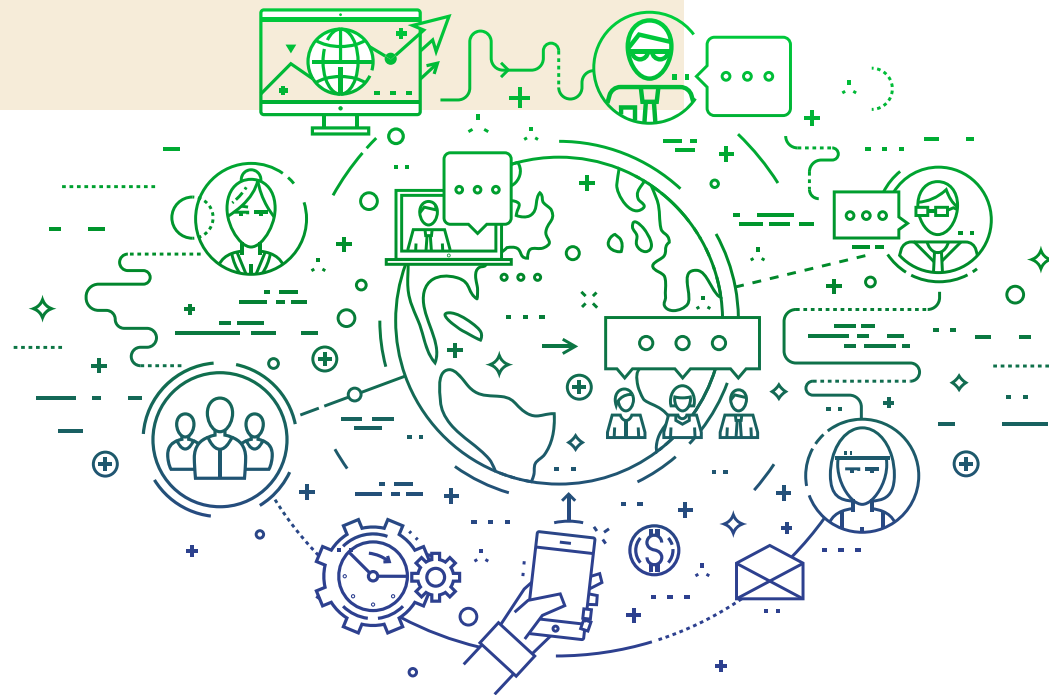
Back in 2001, when Sarrasin took a job in tech support with BCD Software, he had no idea what an AS/400 was but he learned quickly. He stayed with BCD until it was acquired by Quadrant Software in 2014. Two years later, Quadrant was acquired by Fresche Solutions.

“The ecosystem has been pivotal in helping organizations running these business-critical systems. The efficiencies they’ve gained from what the ecosystem has built is a big driver and a big reason why they’ve been able to be so successful,” he adds.

MORE THAN PARTNERS

While the loyal and passionate partners are important, it’s the integration among the partners, IBM and customers that work together to keep the platform vital.

IBM builds the technology, markets the platform and supports the many user groups worldwide. The partners sell the hardware, tools vendors’ solutions make the hardware more efficient and secure, application vendors provide ERP and



financial back-office solutions and the customers who regularly provide IBM with requirements to ensure the platform continues to meet their needs.

“It’s a healthy ecosystem and a very big part of that ecosystem is how strong the people who use the platform feel about it and working with it,” says Tom Huntington, executive vice president of technical solutions at Fortra.

35 YEARS OF INNOVATIONS

Throughout its 35-year history, the IBM i has embraced change and evolved to keep pace with industry standards and client needs. Chief among those innovations has been the ability to support open source solutions, which provides clients and partners with options for languages that have enabled modernization and attracted new developers to the platform.

“Open source has given clients the ability to integrate with things sitting in the cloud or other systems that are running in their environment,” says Christine McDowell, vice president of marketing at Fresche Solutions. McDowell’s introduction to the platform came at the young age of 19 when she took a job as a key punch operator for System/36 and System/38 in 1989. She became the company’s AS/400 system administrator within a year.

Another innovation McDowell feels is key is all of the work IBM has done from a database perspective, enabling AI architecture, making data accessible to clients, and simplifying reporting and analytics with Db2 Web Query. “Data is the cornerstone of AI, and we’re just starting to see the impact it can have,” she explains.

IBM continues to ensure the platform stays current with tech trends like cloud, SaaS and

“
Legacy means it’s proven;
it works; it’s dependable. It
doesn’t necessarily mean [IBM i
is] old...that integrated database,
integrated security, those are
second to none.”

—Pete Massiello, former president of iTech Solutions Group

others while maintaining backwards compatibility so that older software continues to run on new models of Power Systems running the latest version of IBM i.

“I think a lot of times people on the IBM i take it for granted because IBM has gotten so good at integrating hardware and software updates and updates while still giving customers the ability to keep running older software,” Ash says.

LEGACY ISN’T A BAD THING

While it is modern and current, many slap the “legacy” label on the platform. Massiello laughs when he hears that term applied to a platform that’s running entire companies.

“Legacy means it’s proven; it works; it’s dependable. It doesn’t necessarily mean it’s old,” he explains. “So the user interface may not be the sexiest thing, but that integrated database, integrated security, those are second to none.” ■

20
24

SOLUTIONS
DIRECTORY

Company and
Product Listings



ARCAD
SOFTWARE

arcadsoftware.com ■ sales-us@arcadsoftware.com / 603-371-9074

Celebrating 32 years of innovation, ARCAD Software is the only vendor to combine DevOps and modernization for IBM i in an integrated solution range that is also endorsed and distributed by IBM. ARCAD solutions power the digital transformation of some of the largest IBM i organizations worldwide.

➤ Application Modernization

ARCAD CodeChecker

Continuous code quality and security for IBM i:

- Automate the detection of quality flaws and security vulnerabilities in IBM i source code
- Continuous code quality and security checks as part of the DevOps cycle
- Eliminate peer review effort for coding standards with 100+ rules, integrated with RDi

ARCAD for DevOps

ARCAD delivers best-in-class DevOps for IBM i, scalable to fit your needs and budget. Start from 5250/RDi and a simple workflow—and grow to full CI/CT/CD automation integrated with enterprise/open tools such as VS Code, Git, Jenkins, Jira and many more. Feature-rich and extensible, ARCAD for DevOps is proven by organizations large and small worldwide.

Automate each phase in the DevSecOps cycle:

- Application analysis
- Version control
- Build
- Code quality/security
- Unit test
- Functional test
- Deployment/rollback

ARCAD iUnit

IBM i unit test automation:

- Automate the creation and execution of unit test cases for any IBM i module, program or service program
- Generate a complete unit test from RDi in just a few clicks
- Create reusable test assets
- Generate ARCAD iUnit test cases and execute them automatically after each code change
- Shift defects left: Isolate defects early during the coding phase, when they cost the least

ARCAD Transformer

IBM i source code modernization:

- Transformer RPG: Convert legacy RPG code to modern, free-form syntax that’s easy for experienced and new developers to understand and maintain
- Transformer DB: Open and standardize your Db2 databases by converting DDS files to SQL automatically
- Transformer Synon: Convert Synon CA 2E 4GL code to modern syntax
- Transformer Field: Automate mass transformation of RPG source and database following a field size increase

ARCAD Verifier

IBM i regression test automation:

- Data-oriented regression test automation for IBM i. Record functional test cases and replay them automatically at each application release. Detect differences in the database, user interface and spool files.
- Guarantee the accuracy of your modernization project: Run ARCAD Verifier test cases before and after modernization to eliminate regression risk.
- Catch defects before they reach production: As part of your continuous DevTestOps process, ARCAD Verifier runs precisely those tests impacted by a code change.

DROPS

Multi-platform release management:

One single console to manage all your releases, on-premises, hybrid and multi-cloud. Vendor independent and open source. Features include:

- Orchestrate: Plan and pilot your releases
- Provision: Automate your infrastructure
- Deployment: Synchronize code and data, IBM i and non-IBM i
- Rollback: Secure 24-7 availability
- Cloud independent: No vendor lock-in
- Agentless clients: Simplify the deployment process
- Codeless: Design deployment graphically

➤ Data Masking

DOT Anonymizer

With DOT Anonymizer, protect your data outside of the production across all systems and DBMS:

- Simple and sustainable business model, regardless of the volume of data
- Agnostic solution, regardless of the DBMS
- Consistent and usable anonymized data
- On-the-fly anonymization API in production
- Works in synergy with DOT Extract and DROPS for test data management

EXPERT-LED WEBINARS
EXPERT-LED WEBINARS
EXPERT-LED WEBINARS
EXPERT-LED WEBINARS
EXPERT-LED WEBINARS
EXPERT-LED WEBINARS
EXPERT-LED WEBINARS
EXPERT-LED WEBINARS
EXPERT-LED WEBINARS

Complimentary for all users

Attend live or view on-demand at any time

Discover current programming ↗



TechChannel.com/Webinars



CM First builds the most reliable, rapid and cost-effective software tools to optimize and transform enterprise applications. CM First products and services empower developers of IBM mainframe and midrange applications to advance their legacy code in the new digital economy, focusing on custom applications written in COBOL, RPG, Java, CA 2E (Synon), CA Plex, LANSa, as well as other languages. CM First has served the IBM i and IBM Z communities since 1999 and is headquartered in Austin, Texas, with additional offices in Europe.

cmfirstgroup.com ■ info@cmfirstgroup.com / 888-866-6179

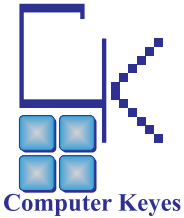
➤ Application Modernization

CM evolveIT for IBM i

CM evolveIT is an innovative enterprise code analysis workbench for IBM Power developers and systems integrators. CM evolveIT reduces analysis costs by up to 80% by employing advanced code slicing technology and best-of-breed code visualizations and analytics and adds powerful transformative capabilities with the ability to convert legacy code to Java.

Managed Application Services

CM First's Managed Application Services (MAS) help organizations manage, enhance and maintain custom applications in COBOL, RPG, CA 2E (Synon) and CA Plex. CM First provides MAS for the full lifecycle—we are an extension of your dev team.



Computer Keyes is a leader in document distribution software for IBM i. kLink allows your employees and customers to securely transfer and access IBM i documents from any mobile device or browser. KeyesOverlay rapidly converts standard SCS printer files into eye-catching PDF documents in full color. KeyesOverlay can also be used to create interactive forms. KeyesArchive will archive spool files into your IFS and optionally index the individual documents or reports within the spool files. KeyesMail and KeyesFax are powerful multifunctional email and fax systems. KeyesPDF converts spool files into images or PDF documents. Computer Keyes has been developing software solutions since 1978.

ckeyes.com ■ sales@ckeyes.com / 425-776-6443

Office Automation and Office Support

KeyesMail

KeyesMail is a powerful multifunctional email system for IBM i. Burst spool files into PDF, RTF or TIF attachments with overlays. The system contains a full set of APIs and monitors an output queue making auto responses, auto forwards or report distribution quick and easy. Email can be accessed from any browser or terminal. The green-screen editor can view Microsoft Word attachments. KeyesMail connects to any mail server.

KeyesOverlay

KeyesOverlay rapidly converts spool files into eye-catching full-color PDF documents. Create graphical overlays in full color (or black and white) then easily map your spool file text with different fonts, sizes and colors. KeyesOverlay can also create interactive forms for your customers to fill out and email or submit back to you.

KeyesPDF

KeyesPDF converts a spool file into an image. The resulting image can be used for any desired purpose, such as emailing or posting to a website. Spool files can be standard SCS printer files, AFPDS spool files or USERASCII spool files with HP-PCL code. The spool files will be converted into TIFF images, PDF documents or ASCII text and placed either in a physical file, into your IFS or onto a network drive. The resulting file can then be emailed, transferred or copied to another destination as desired.

kLink

kLink is a customizable online server for IBM i. It can be configured to do many things, including: sensitive document distribution, secure file transfers (upload and download) and receiving submitted interactive PDF forms data. kLink also includes programmable buttons for performing lots of things, such as order processing. kLink uses two HTTP servers to transfer documents to and from any browser or mobile device, including iPads, iPhones and Android devices.



DRV Technologies Inc. is a software development company creating innovative solutions to help customers get more from their IBM i systems.

DRV’s family of FlexTools software solutions streamlines resources, improves efficiency and enables proactive system management. These solutions include paperless reporting and electronic forms with emailing and archiving, secure check printing and IBM i system monitoring.

drvtech.com ■ info@drvtech.com / 866-378-3366

Office Automation and Office Support

FormFlex

FormFlex native IBM i software replaces preprinted forms and checks with clean electronic forms that print, PDF, email and archive. FormFlex requires no programming or PC servers. Other features include:

- Print forms to laser printers on plain paper
- Track, search and view what was sent
- Integrated PDF, email and archiving
- Add SecureChex to print MICR laser checks

FormFlex replaces obsolete, unsupported legacy tools and is available at a flat price for unlimited users.

SpoolFlex

SpoolFlex native IBM i software delivers an automated solution that quickly provides reliable, traceable, paperless report distribution in the formats users need. Features include:

- Convert spooled files to PDF, Excel and more
- Fully automated report delivery
- Integrated emailing and archiving
- Track, search and view what was sent

SpoolFlex requires no programming or PC servers and is flat priced for unlimited users.

Systems Management

MessageFlex

IBM i system messages can tell you how the system is performing, provided someone is logging on and reviewing those messages. But in today’s environment, with remote workers and staffing challenges everywhere, maintaining personnel to monitor a console is a commodity many companies simply don’t have.

DRV’s MessageFlex software monitors IBM i message queues for system and program messages—proactively sending notifications by email, text message or forwarding messages without human intervention.



Dynamic Solutions
INTERNATIONAL

Backup to the Future

DSI's Virtual Tape Libraries (VTL) offer next-generation speed, security and access for IBM i, Unisys Clearpath and open platforms

Trust the Industry Leader

For 50 years, Dynamic Solutions International (DSI) has consistently set the standard for data protection and security. From mid-sized companies to large corporations, more than 2,000 customers and counting have trusted DSI to navigate the fads, trends and true innovations of the IT landscape.

The Difference is in the Details



Experience

More than 2,000 customers and counting have trusted DSI to navigate the trends and true innovations of an increasingly complex IT landscape.



Expertise

As data protection requirements become more demanding, customization is the key. We'll design a solution that's right for you.



Excellence

From superior hardware and software to exceptional service and support, we do things the way they should be done.



Integrity

For 50 years, we have made a daily commitment to of earning our clients' trust by providing honest advice and dependability.



Innovation

DSI's genuine dedication to thoroughly understanding our customers' needs has driven decades of consistent innovation.



Reliability

Performance is nothing without reliability. Two of the world's largest core banking application providers trust DSI to deliver both.



REQUEST A FREE CONSULTATION

DynamicSolutions.com

PRODUCTS

TechChannel

SPONSORED CONTENT



Dynamic Solutions
INTERNATIONAL

Dynamic Solutions International (DSI) provides virtual tape library (VTL) solutions to businesses of all shapes and sizes—single-site, small organizations to multi-site global institutions. Over the past 50 years, more than 2,000 customers have trusted us to securely store and back up mission-critical data. We work closely with our customers to understand their backup requirements and anticipate their future demands. We are excited to announce that IBM has selected the DSI VTL solution for the replacement of ProtecTIER. DSI VTL systems have been qualified by IBM Lab Services and are the only supported solution for IBM i environments.

dynamicsolutions.com ■ ibmsales@dynamicsolutions.com / 303-754-2080

HA/DR/Backup

iDSI620-D24

The iDSI620-D24 is designed to help your IBM i environments keep pace with rapidly expanding data requirements. This VTL delivers the highest performance in the industry with superior reliability and enterprise class deduplication. The iDSI620-D24 provides an easy-to-scale solution capable of supporting 1 TB to 24 TB of deduplicated storage capacity.

iDSI620-D48

The iDSI620-D48 is designed to help your IBM i environments keep pace with rapidly expanding data requirements. This VTL delivers the highest performance in the industry with superior reliability and enterprise-class deduplication. The iDSI620-D48 provides an easy-to-scale solution capable of supporting 1 TB to 48 TB of deduplicated storage capacity.

iDSI620-EV0/EVD

The iDSI620EV0/EVD is a high availability enterprise VTL solution for IBM i environments. Enterprise-class clustered systems deliver unparalleled deduplication performance that can be scaled from 1 TB to multiple petabytes, depending on your requirements. It is commonly configured for full redundancy and is compatible with a wide range of SAN, iSCSI and cloud protocol support.

DSI VTL Conductor

DSI VTL Conductor integrates into your existing environment and media management software, delivering automated, host-based policies that leverage all of the virtual tape library's functionality, simplifying everything from legacy media migration to media duplication. Conductor can automatically import legacy media, recreate missing media and duplicate media. It also adapts to changing inventory requirements.



Flagship provides IBM solutions, managed services and cloud solutions worldwide. These include data center strategic planning and hybrid cloud implementations based on a wide range of assessments that look at virtualization, server consolidation, security and infrastructure-focused integration. Flagship’s managed services include cloud-based server monitoring and management, 24-7 helpdesk support and data center infrastructure management.

flagshipsg.com ■ kcates@flagshipsg.com / 561-208-3941

Business Intelligence/Analytics

IT Infrastructure Analytics Solutions

Infrastructure analytics provides the building blocks of a next-generation IT architecture that empowers your enterprise and sets your business on the right path toward the future.

Cloud

Managed Cloud Services

With managed cloud services, Flagship takes cloud computing to the next level—increasing infrastructure flexibility, lowering costs and helping your business leverage big data.

Security

Security Solutions

Managed security helps you combat today’s most sophisticated network attacks, combining next-level prevention, detection and response to advanced cyber threats.



Fresche is the global leader in strategy, modernization, cloud hosting, data, managed services, application support and security solutions. We specialize in modernizing business processes and technology legacy applications, offering end-to-end services that redefine the way businesses operate.

Fresche professionals combine innovative technology with business expertise that fuels transformation and growth. We do this by leveraging IT assets to take advantage of digital solutions while reducing time to market and lowering risk and costs.

freschesolutions.com ■ info@freschesolutions.com / 800-361-6782

Application Modernization

Application Modernization and Transformation

RPG, COBOL, Synon and DDS have served organizations for decades because they provide business rules, operational procedures and customer data. However, it’s difficult to find resources to maintain and modernize them.

Fresche application and database modernization solutions include skills and tool-assisted re-architecting and rewriting for:

- Converting RPG and Synon to modern languages (PHP/Java/RPG Free)
- Moving DDS to modern databases (DDS to DDL, SQL, etc.) without recompiling
- Integrating with other applications

Green Screen Modernization Solutions

Web and mobile applications can help organizations increase end-user productivity, streamline workflows and improve end-user experience.

Presto, which is now available via subscription, automatically delivers a modern UI using your IBM i applications. It includes:

- Global rules to customize multiple screens
- APIs to integrate with other technologies
- Visual designer to add new functionality (autocompletes, images)
- Optional web portal to access modernized screens, new web applications and other resources
- Mobile support

Digital Solutions and Services

Better workflows, intuitive navigation and access to data are some benefits of web/mobile applications. Our team can help you create APIs, extend your ERP, create new applications, implement DevOps and more.

From ideation to deployment—we’ll help with all aspects of your application development efforts. We understand the technologies necessary to develop solutions for you. Count on us to take ownership of projects and provide solutions that play a strategic role in your IT environment.

IT & IBM i Solutions That Deliver REAL Business Outcomes

Compliance | Growth | Innovation | Risk Mitigation | Operational Efficiency



Business & IT Strategy

Establish a strategic direction for IT initiatives that align with business priorities, deliver better value with quick wins, and help you deal with market disruptions.



Digital Solutions (Web & Mobile Development)

Design and build brand new responsive and secure web and mobile applications, create APIs, integrate your systems, or extend your ERPs with IBM i and full stack experts.



Transformation & Modernization

Take an iterative approach to digitally transform your applications into modern languages and architectures to gain quick wins and near-term results.



Cloud & Managed Services

HA/DR, managed services, and infrastructure for IBM i and surrounding systems, with faster response times, expert skills, and world class support – on prem, in the cloud, or hybrid.



Compliance & Security

Advanced security software and services to protect your business-critical data against cyberattacks, uncover vulnerabilities and achieve regulatory compliance.



Expert Staffing Services

Gain access to IT and IBM i experts to help move IT projects forward, reduce backlog and support your business-critical systems. Fast onboarding, flexible engagement models and full stack expertise.

Get answers to your biggest IT challenges
Book a strategy session with our team of experts



SCAN ME

info@freschesolutions.com



Application Modernization

X-Analysis

X-Analysis is an application understanding and management tool that gives you everything you need to understand, maintain, enhance and evolve RPG, CA 2E (Synon) or COBOL applications. Now available via subscription, X-Analysis helps developers, analysts, architects and operations teams make informed decisions, modernize operations and manage applications.

X-Analysis increases developer productivity because it enables you to document and discover information that you would otherwise have to find manually. It also mitigates risk because it provides automated impact analysis.

Cloud

IBM i (AS/400) Operations Management (On-Premises/Cloud/Hybrid)

Fresche provides dedicated tools and expertise to better manage and maintain everything from infrastructure to applications on IBM i. Augmenting existing staff and backfilling retiring staff with highly trained and skilled technical resources can help you bring more projects to completion and enable IT to deliver better value to the business.

Our operations management solutions provide the most innovative and advanced practices and comprehensive SLAs for response, uptime, backup and business continuity.

Compliance/Security

Fresche Compliance and Security Solutions

A lack of skilled resources and security knowledge has left companies, including IBM i users, vulnerable to cyberattacks.

Created for IBM i and available via subscription, the Fresche TGSecurity Suite offers:

- Ransomware protection
- Multi-factor authentication (MFA)
- Exit-point security
- Security compliance
- SIEM integration
- Data encryption

Engage Fresche's security experts for:

- Free assessment
- Security consulting
- Penetration testing
- Free TGSecurity Suite trial

HA/DR/Backup

IBM i (AS/400) HA/DR and Backup Services

When unplanned downtime hits, the ability to quickly restore data and gain access to systems is critical. IBM i HA/DR and backup services deliver flexible, secure solutions that ensure your company can scale, recover and get up and running fast. Our team of IBM i experts brings HA/DR and backup management solutions for your systems—on premises, in the cloud or both—with as little or as much help as you need.



Office Automation and Office Support

Formtastic

Formtastic is a subscription-based document automation solution that enables you to design forms, checks and barcode labels from a WYSIWYG designer. Formtastic extracts spool data and inserts it into the new business form. You can automatically fax, email, print or store the newly formatted document within a network.

- Create graphical IBM i documents without coding or redevelopment
- Instantly modernize ERP documents with prepackaged overlays
- Replace outdated solutions (IBM AFP Utilities, Optio, ACOM)

Services/Consulting

IT Strategy and Discovery Solutions

Improving competitiveness is challenging in the face of technology change, increasing customer demands and a shortage of RPG, COBOL and CA 2E (Synon) developers. Fresche's IT strategy services allow you to deliver better business value by aligning IT initiatives with strategic business goals. Services include:

- Detailed analysis, strategy and planning for IT
- IBM i Security Assessment and Planning
- Modernization roadmaps, IT health check and Path to IT Maturity
- Strategic Path to Cloud Adoption
- Transformation Readiness Assessment and Planning
- Data Insights Strategy

Staffing and Managed Application Services

Many companies have difficulty finding staff with IBM i skills to maintain and enhance their systems. Our flexible staffing and application services let you hire our IBM i experts to help with anything you need: maintenance, new development, modernization or ensuring that applications have the level of support they need. Our experts can work as part of your team, or you can choose to let us manage the project.

Web Development

Web and Mobile Development

WebSmart is a rapid development tool for creating PHP and RPG applications that run on IBM i, Windows or Linux. Now available via flexible and affordable subscriptions, WebSmart helps you quickly develop strategic applications that improve processes or generate revenue (e.g., B2B order entry, e-commerce, invoicing).

WebSmart's templates shorten the learning curve by generating the starting client and server-side logic. You can then add custom business logic in the IDE to create applications for any business need.



Friedman Corporation's Frontier ERP software is ideal for manufacturers who design, build, modify and/or assemble products to order. Featuring an advanced parametric configurator, Frontier's CPQ (configure-price-quote) tools help your company work smarter by seamlessly managing your customer and dealer orders, every point in your supply chain, plus your internal manufacturing and financial processes. Frontier is available on premises or cloud hosted. It's your key to meeting the increasingly high expectations of today's customers, making you their manufacturer of choice.

friedmancorp.com 847-948-7180

ERP

ERP for Kitchen and Bath Cabinet Manufacturers

Frontier ERP gives kitchen, bath, closet and other cabinet manufacturers complete flexibility for creating and building custom and semi-custom orders. Featuring a fully integrated online dealer order-entry system, this configure-price-quote functionality queries your inventory and maps to our powerful product configurator. Only buildable orders can be entered, saving time, reducing errors, and streamlining production. Integrates easily with CNC machines, popular CAD software, kitchen design and layout tools. A complete ERP for manufacturing success.

ERP for Manufacturers of Doors, Windows and Coverings

Frontier ERP for windows, doors, shower enclosures and window treatments helps manufacturers of cut-to-size products achieve peak performance. Dealer ordering and product configuration tools are at the heart of our software. Frontier checks inventory, issues BOM and cut lists and schedules production with material optimization and machine integration. Our complete ERP solution includes 3D product engineering, modeling and rendering, web access for ordering and tracking, plus all the core manufacturing features you need to succeed.

ERP for Furniture Manufacturing

Frontier ERP furniture manufacturing software helps you tame the staggering array of options offered to dealers, designers, retail partners and/or end customers. With Frontier ERP, all your data is always up to date, so you can configure, price and quote quickly and accurately. The configurator at the heart of Frontier means only buildable products can be ordered. Web orders do not have to be re-entered or synced, saving valuable time. Learn how to achieve operational excellence.



HarrisData is a family-owned and -operated business that has succeeded for over 50 years through a commitment to excellence and a determination to serve customers well. Developing enterprise application software solutions for mid-sized businesses, HarrisData offers ERP, HRIS, CRM and financial management. Implementation strategy focuses on getting live quickly; development focuses on features that deliver value, with the license designed around our customers. Our software delivers the basic tools that help you grow your business.

harrisdata.com ■ sales@harrisdata.com / 262-784-9099

Business Management

AppsInHD HRIS

AppsInHD HRIS provides a hands-off HR/payroll solution. The interactive aspect eliminates the complexity of processes with pervasive automation using upfront rules configuration. You can plan ahead, set calendars and feed the pay transactions—plus AppsInHD HRIS runs payroll. Paycheck recalculation on-demand eliminates the need to do complete payroll reruns, and alerts allow for better business management. The UI allows enterprise users to organize work, eliminate busywork and get jobs done quickly and efficiently.

HarrisData ERP

HarrisData’s ERP is an expert integrated system designed exclusively for IBM Power Systems. A comprehensive set of integrated applications manages the flow of information throughout the enterprise, including manufacturing, distribution, accounting, CRM, purchasing, human resources, payroll and employee self-service. Flexibility enables companies to respond quickly to customer demands, control costs and reduce time to market. Enabling improved processes and tools such as lean manufacturing and Kanban boosts productivity and profits while reducing waste for companies.

HarrisData Financials

HarrisData’s state-of-the-art financial application utilizes the latest browser-based, drill-down functionality, simplifying preparation, analysis and interpretation of financial statements. Access to information such as source data is readily available for any transaction at any time. Accounts Payable provides the tools to control cash expenditures, improve cash management, provide comprehensive vendor management and reduce effort. Accounts Receivable manages the task of recording sales and collecting cash, including invoice entry, aging, collections, cash posting and customer management.



IBM i EDUCATIONAL TRAINING FOR YOUR TEAM

imPower Technologies helps companies hire and train the next generation of IBM i developers. We provide online, self-paced, instructor-led IBM i training for new and seasoned developers. Our courses enable new developers with little to no IBM i experience to become highly competent and seasoned developers to learn new tools for modernization. Courses include videos, sample programs, graded quizzes, weekly meetings and the use of an IBM i partition.

impowertechnologies.com ■ 262-455-0408

Education

Online Course: IBM i Concepts and Operations

This comprehensive course is designed for entry-level and other platform developers to learn the IBM i. Upon completion, students will be proficient in using the IBM i operating system, Db2 database and IBM’s new development tools. The course includes a mixture of videos, graded quizzes and labs, and weekly online meetings to ensure optimal retention and understanding of the course material. Class duration varies and is based on student activity—maximum of eight weeks.

Online Course: Programming in ILE RPG

Train new and current developers on the ILE RPG language in less than 10 weeks. Students will learn the latest RPG techniques, with each section covering two chapters of Jim Buck’s* “Programming in ILE RPG” 5th edition textbook. The course is a combination of lectures, graded quizzes, programming examples and programming assignments. Students are invited to attend live Webex meetups once a week to ask questions during the course.

Workshops: RDi and Modular Programming and SQL

imPower offers workshops for developers to expand their knowledge and skill: RDi and Modular Programming and SQL Queries. These workshops are self-paced with labs, quizzes and video instruction. Taught by Jim Buck, the 18-hour RDi workshop teaches developers RDi and new techniques and procedures that are essential for modernization. SQL Queries, taught by Birgitta Hauser, teaches developers SQL SELECT statements and more. Other workshops coming soon.

* Jim Buck is CEO, co-founder and lead instructor at imPower Technologies. He is an IBM Champion for many years and has been teaching IBM i technologies for more than 20 years.



Want to upgrade your legacy applications but concerned about disruption, costs or developer shortage? Modernize confidently with LANSA. Extend IBM i investments, speed up modernization and build tailor-made solutions for all platforms using professional low code. Trusted by brands like Visa, Disney and McDonald’s, LANSA brings decades of experience in driving digital transformation for smoother user experiences and business success.

www.lansa.com ■ 630-874-7000

➤ Application Development

Professional Low-Code Development

Build advanced and integrated applications faster using LANSA’s professional low-code platform. Boost your productivity by leveraging a user-friendly language for limitless, full-stack development. Take advantage of reusable components for rapid deployment across web, mobile and desktop.

➤ Application Modernization

IBM i Application Modernization

Why migrate when you can modernize more efficiently? Retain vital business logic while elevating user experience and overall usability by web-enabling your legacy applications. Elevate design and functionalities with minimal coding—no RPG skills needed.

➤ Business Intelligence/Analytics

NEW Embedded Business Intelligence

Turn data into action with LANSA’s business intelligence solutions. Uncover trends and opportunities through user-friendly, AI-powered tools that aid all types of users in generating insights. Create dynamic dashboards and reports for collaborative data exploration, empowering smart choices at the point of decision-making.

➤ EDI

Business Process Integration

Optimize operations with LANSA’s integration prowess. Seamlessly connect disparate systems, synchronize data in real-time and automate business processes. Prevent costly human errors and initiate digital transformation to deliver better user and customer experiences.



Logicor serves clients of all sizes by providing scalable, multicarrier shipping software and integration services. GlobalShip iSeries by Logicor automates and streamlines order fulfillment and shipment execution for companies using FedEx, UPS, USPS, DHL, Canada Post, LTL carriers and many more. The suite of applications integrates seamlessly into an organization’s existing supply chain, ERP, WMS, order management and e-commerce applications.

logicor.com ■ sales@logicor.com / 888-867-7901

➤ Tools and Utilities

GlobalShip iSeries

GlobalShip iSeries from Logicor is a full-featured IBM i suite of multicarrier shipping software solutions designed specifically for your shipping environment. Some of the features include:

- Support for USPS, FedEx, UPS, DHL and more
- Pack Module
- Intelligent rate shopping with DIM
- Installs on your existing server
- Integration with enterprise applications
- Unlimited companies and locations
- Consolidation
- LTL support with bill of lading
- International documents
- Business rules driven workflow

GlobalShip iSeries Pack Module

GlobalShip iSeries Pack Module verifies that the correct product is being shipped in the correct quantity as items are packed to a box. This feature can greatly reduce errors and improve customer satisfaction. With this capability, GlobalShip iSeries can effectively manage multiple functions of your logistics system:

- Pack verification
- Compliance 128 labels
- Line-item detail (carton and pallet contents)
- Serialized part number verification
- Accurate COD tags based on carton contents
- International customs documentation
- Hazardous materials documentation



Maxava is a worldwide provider of innovative monitoring, high availability and disaster recovery solutions. Maxava’s software and services are available from a global network of partners and are integral to the cloud offerings of leading managed service providers and cloud service providers. Maxava is an IBM Business Partner, and Maxava software is available via SaaS, cloud (Disaster Recovery as a Service and Monitoring as a Service), subscription and on-premises software licensing models.

maxava.com ■ sales@maxava.com / 888-400-1521

HA/DR/Backup

Maxava HA Enterprise+

Maxava HA Enterprise+ provides scalable, cost-effective IBM i real-time replication. Suitable for on-premises, colocation, and cloud environments, as well as cloud migrations. Features include:

- Simulated Role Swap enables users to test their disaster recovery plan without downtime
- Remote Role Swap Capability allows admins to perform a role swap via a mobile device
- Multi-threaded IFS dynamically replicates up to 255 parallel processes to enable faster processing of IFS data
- Command Scripting Function allows pre-enabled commands to be defined and run to reduce failover and role-swap times

Maxava CPR

Maxava’s Capture Point Restore (CPR) serves as a “recycle bin” from which to recover previous versions of your IBM i data. Configured files are captured right up to the last transaction, ready to be immediately restored if recovery is required. Immediately recover objects and data after unintended deletion or corruption, with point-in-time recoverability. Other features include an added layer of ransomware protection, event-triggered archiving and support for archiving to IBM i and non-IBM i, local, remote and cloud storage.

Systems Management

Monitor Mi8

With Mi8 cloud-based architecture, you can monitor local and remote systems for potential issues. Monitored alerts are delivered to your chosen expert, and your platform of choice, allowing for immediate remedial action. This solution supports in-house, remote management, colocation and MSP monitoring. Other features include:

- Filter, group and display technology, allowing you to choose who sees what, including business entity, location, systems type, operational area, platform and more.
- Comprehensive monitoring for applications residing on IBM i, AIX, Linux and Windows plus operating system, hardware, high availability and performance capabilities.



Meridian IT is a leading IT solutions provider with more than 40 years of experience helping medium and enterprise businesses with their IBM i and AIX on Power Systems needs.

Offering best-in-class cloud, on-premises and hybrid solutions, Meridian IT works with each client to execute a customized plan to support their business requirements and solve their IT obstacles.

meridianitinc.com ■ 847-964-2664

Cloud

NEW mPower Cloud Migration Factory

Meridian’s mPower Cloud Migration Factory is a comprehensive solution that helps businesses of all sizes migrate their workloads to the cloud quickly, securely and cost-effectively. Our proven methodology minimizes downtime and disruption to your business and ensures the successful migration of workloads to the cloud.

Data Management

Backup as a Service

Meridian’s Backup as a Service (BaaS) is a private or public cloud solution that provides businesses with the infrastructure they need to run their mission-critical applications. BaaS is built on best-of-breed technology and hosted in world-class data centers, so you can be confident that your data is secure and your applications are always up and running. You get a fully managed solution that provides scalability, performance and security.

Managed Service Providers

Enterprise Managed Services

Meridian IT’s Enterprise Managed Services (EMS) is designed for our client’s intricate needs. EMS provides comprehensive managed services that encompass at least one entire vertical of a customer’s IT support, whether it’s for an entire organization or a specific business unit. Our offering focuses on four areas: infrastructure, application, cloud and end-user helpdesk services. We offer tailored, expert support ensuring the seamless operation of your IT functions, enabling you to focus on your business objectives.



IBM i shops large and small trust software and services from MDNA to evolve their IT strategies without hampering productivity. With Midrange Dynamics integrated solutions, meet your DevOps, application modernization and CI/CD goals on schedule and on budget. Whether you are just getting started or lack software updates, responsive support and reasonable fees from your current vendor, we can help. Our team’s decades of experience will make it easier for you to build great applications.

md-na.com ■ info@md-na.com / 877-290-6714

APIs

MDRest4i

MDRest4i enables IBM i programmers to easily build quick and secure REST APIs and consumers using RPG and SQL RPG ILE. As an IBM i application expert, enforce your business rules without relying on middleware, code abstractions or connectivity drivers. Build any kind of integration with your IBM i applications. MDRest4i comprises an RPGLE development framework, a software development kit and an API documentation portal. MDNA clients can use MDChange to track and deploy their MDRest4i APIs.

Application Development

MDChange

MDChange unites IBM i and enterprise development so projects move smoothly to production. It keeps track of software changes throughout the build cycle, and it supports IDEs (including VS Code), DevOps and CI/CD pipelines. Field-level cross-referencing quickly identifies what needs to be changed. Source can reside in source files, IFS or in a Git/SVN repository. Deploy IBM i objects, Java, PHP and other programs in one package to IFS or other servers, with flexible rollback.

Database

MDRapid

Moving to modern, efficient database architecture is easier to plan and achieve. MDRapid substantially reduces business application downtime and risk as you deploy IBM i database changes across your enterprise. High availability technology, in conjunction with change management techniques, converts IBM i database files with minimal interruption. Your business applications can continue to access databases as usual while database management is taking place. Move the new files into production with only minutes of downtime.



With a legacy spanning more than four decades, ProData stands as a prominent industry leader in the development of IBM i utilities. As a trailblazer in utility development, ProData’s flagship product, DBU, has gained global recognition with over 20,000 licenses sold worldwide.

dodbu.com ■ sales@prodatacomputer.com / 800-228-6318

Application Development

DBU

DBU allows users to view and access all data on all systems using one interface. Instantly access information on logicals, enable security and audit logs or view and update multiple files. Access your data via green screen, Rational Developer for IBM i or web interface. DBU supports access to IBM i, MySQL, Oracle and other databases. Use DBU to analyze, access and secure data on all your servers and track any modifications made.

RDB Connect

RDB Connect empowers you to access data from multiple sources effortlessly, whether it’s databases, FTP file servers, APIs, spreadsheets, cloud services or legacy systems. Developers will have robust APIs for integration and customization, rock-solid data security and lightning-fast transfers to help boost productivity across your organization. Whether you are in finance, healthcare or logistics, RDB Connect can adapt to any industry with a low-cost solution.

SQL/Pro

SQL/Pro provides the total package for all your in-house SQL software requirements. SQL/Pro users will benefit from improved interactive performance, SQL history, additional SQL statement prompting and multi-language support. Statements can be executed in batch or by interactively allowing output directed to a display, printer file or database file. Use SQL/Pro in conjunction with SQL/Audit to capture information about who executed the SQL, when it was done, what library/file it was run against and other pertinent information. Users can report all this information and use it to tailor their SQL statements and/or report these modifications as required by internal audits or compliance regulations.

FIND TECH SOLUTIONS ONLINE
FIND TECH SOLUTIONS ONLINE
FIND TECH SOLUTIONS ONLINE
FIND TECH SOLUTIONS ONLINE
FIND TECH SOLUTIONS ONLINE
FIND TECH SOLUTIONS ONLINE
FIND TECH SOLUTIONS ONLINE
FIND TECH SOLUTIONS ONLINE
FIND TECH SOLUTIONS ONLINE
FIND TECH SOLUTIONS ONLINE

A ready resource at your fingertips
Searchable by company, category or product



Profound Logic is the only IBM i technology partner that takes you beyond modernization and into futurization, empowering you to transition into the demands of tomorrow. For more than 22 years, we've helped IT teams embrace the future with industry-leading solutions for system transformation, API creation/management, application development and more. The future is flexible with Profound Logic.

profoundlogic.com ■ sales@profoundlogic.com / 877-224-7768

APIs

Profound API

Create and deploy APIs in days not months on IBM i.

API creation is often confusing, time-consuming and overwhelming. This is because many IT leaders still believe complex problems require complex solutions. The reality is APIs can be surprisingly simple. Sadly, many API solutions promised ease but profited by making it hard. There is a better way. And it is paved in fully transparent, highly automated and highly scalable low code.

Application Development

Profound.js

Profound.js provides low-code development capabilities, significantly accelerating the process of developing and deploying IBM i desktop and mobile applications by removing manual hand-coding efforts. The new applications are built in Node.js, which runs natively on IBM i and other on-premises and cloud platforms.

With this low-code solution, IT departments can keep up with the demands of maintaining existing applications while deploying new applications and application enhancements in a fraction of the time of traditional development. It mitigates the challenge new developers have when adjusting to developing on the IBM i platform and ensures development doesn't slow down when RPG developers retire.

Application Modernization

Flexible Code Transformation Service

Modernization is no longer modern. Welcome to futurization. 74% of modernization efforts fail. Textbook approaches are too rigid to deal with the complexity of the real world. True transformation requires highly flexible solutions, teams and tools.

Flexible Code Transformation is a service that gives businesses an automated approach to converting legacy IBM i RPG source code to Node.js or truly modern RPG.



Racksquared Data Centers offers everything from colocation to fully managed IT solutions. We specialize in providing IBM Power solutions including colocation, cloud backup, disaster recovery, IBM Power in the cloud and IBM i administration services. Our customers gain access to technical expertise, the latest technologies, and a secure, reliable, resilient environment for their IT systems. We become an extension of your team, managing, monitoring and supporting your infrastructure, so your business is always up and running.

racksquared.com ■ sales@racksquared.com / 855-380-7225

Cloud

IBM Power in the Cloud Solutions

Stop buying and depreciating hardware. Deploy Racksquared’s IBM Power in the Cloud. This solution provides you with access to IBM Power10 infrastructure custom configured with the resources (processor, memory and storage) you need. In addition, our administrators perform the day-to-day management of hardware and operating systems, handle PTF installs, manage backups and a host of other tasks. With servers located in a secure, reliable and resilient data center, we keep your business up and running.

Intel Cloud Solutions

Our expertise isn’t limited to IBM Power. We can also host your Intel infrastructure in our cloud. Utilizing VMWare and SAN storage, we can configure a system with the processor, memory and storage you need to run your applications. Along with the resiliency of this platform, we also provide backup of your production data at our secondary data center. Our cloud solutions are designed to keep your business up and running.

HA/DR/Backup

IBM Power Disaster Recovery Solutions

Do you have a disaster recovery plan for your IBM Power system? Racksquared’s IBM Power Disaster Recovery solutions are designed to give you peace of mind knowing that in a disaster situation you are prepared to recover. With reserved hardware, high availability and other solutions available, we can customize a solution that meets your recovery point and recovery time objectives. Add on annual testing and you can be confident that you are disaster ready.

IBM Power Cloud Backup Solutions

Still using physical tape to back up your IBM Power system? Racksquared’s IBM Power Cloud Backup solution provides you with a digital solution for backing up your data offsite. By leveraging a virtual tape library, you can reduce downtime for performing backups and in the event of a disaster, experience faster recovery time. With your data stored in a secure, reliable and resilient data center, you can focus on your core business.

Managed Service Providers

IBM Power Colocation Solutions

When it comes to your environment, are you doing the best you can with what you have? Racksquared’s IBM Power Colocation solution provides companies with a secure, reliable and resilient environment for their Power server. Our data centers are designed with redundant power, internet and systems, so you can be confident you won’t experience any downtime. Once colocated, we can take over backup and administration services so you can focus on your core business.

Services/Consulting

Managed IT Services

Your customers don’t care about your IT infrastructure; however, most companies dedicate a significant amount of their IT resources to managing it. When you outsource the management of your IT systems, your team can focus on creating solutions that differentiate your business and deliver value for your customers. Let’s talk about how Racksquared Data Centers can customize a fully managed IT solution to meet your business needs.

Systems Management

IBM Power Administration Services

The pool of available IBM Power experts is shrinking, while demand for this skill set remains strong. Racksquared’s IBM Power Administration services provide customers with access to a team of experienced admins for the day-to-day support, management and monitoring of your IBM Power environment. With your most critical business applications running on IBM Power, doesn’t it make sense to have an expert managing it for you? Available for on-premises or cloud servers.



IBM i is different from other systems. Securing it requires expertise. Raz-Lee Security is one of the only IBM i security providers that concentrates on the IBM i. Raz-Lee delivers high-level security solutions, enabling organizations to comply with global regulations such as GDPR, PCI and SOX.

Raz-Lee’s flagship iSecurity suite protects against insider and outside threats, preventing unauthorized access to business-critical information. Raz-Lee is committed to providing comprehensive IBM i compliance, auditing and security solutions.

razlee.com ■ marketing@razlee.com / 888-729-5334

Business Intelligence/Analytics

iSecurity AP-Journal

By providing a timeline report of all changes relating to application data, iSecurity AP-Journal reduces unauthorized activity and enables users to meet regulatory requirements. iSecurity AP-Journal also issues real-time alerts to inform managers of any changes in application databases or unapproved access to critical data.

iSecurity Audit

iSecurity Audit enhances native IBM i auditing by monitoring and reporting on all activities in the IBM i environment. It employs real-time detection to identify security events as they occur and record details in a log file. iSecurity Audit offers the most powerful and flexible reporting features available today. It includes more than 80 ready-to-run queries and reports.

Database

iSecurity DB-Gate

iSecurity DB-Gate empowers IBM i customers with exciting data access capabilities, based on open database connectivity, employing standard IBM i facilities to enable fully database-transparent access to remote systems.

Security

iSecurity Anti-Ransomware

iSecurity Anti-Ransomware quickly detects high-volume cyber threats deployed from an external source, isolates the threat and prevents it from damaging valuable data.

iSecurity Antivirus

iSecurity Antivirus software cannot be disabled by any known virus, runs locally at the IBM i or can be executed on ICAP Client Mode releasing all the processing load to specific and trusted servers and gives to you the power to choose the antivirus database provider.

iSecurity Firewall

iSecurity Firewall is a comprehensive, all-inclusive intrusion prevention system that secures every type of internal and external access to the IBM i server. It enables you to easily detect remote network access and—most importantly—implement real-time alerts.

iSecurity Multifactor Authentication

iSecurity provides multifactor authentication (MFA) simply, inside the IBM i, as part of the user’s initial program, prompting for MFA at sign-on. No need for multiple login steps—one step is enough.



Real Vision Imaging (RVI) is an industry-leading paperless solution that enables you to digitize and index your most important documents, making them available for later retrieval, including secured access from the web or even a mobile device. RVI is a cross-industry solution available on three platforms: Power Systems running IBM i, Microsoft Windows and cloud. RVI provides the expertise to assist with requirements definition, implement your system, train your users and deliver superb help desk support following your install.

realvisionsoftware.com ■ johnpaul@realvisionsoftware.com / 318-855-0283

➤ Document Imaging

RVI Cloud

The RVI Cloud document imaging solution runs in a protected and reliable environment with a monthly/yearly rate based on your company’s data usage. It offers the complete solution, which includes scanning, workflow, viewing, mobile applications and also capture and storage of PC documents, reports, files, photos and video. Your RVI imaging system also includes many levels of security to protect your data and images. As an extra security tracking measure, RVI offers auditing and tracking so you can always know the history of each document. Has AI enabled.

RVI for IBM i

RVI Complete for IBM i document imaging system is a powerful and robust solution that incorporates all of the advanced imaging and management functions to satisfy a variety of business needs. It’s a solution for scanning, storage, retrieval of black-and-white documents and color images, spool files, overlays, email, fax, audio and video content. This product is easily integrated with your core business applications. It’s user-friendly and scalable from a pilot program to an enterprise-wide content management solution. Has AI enabled.

RVI for Windows

RVI Complete for Windows is a powerful digital document management solution developed for the Microsoft Windows platform. It’s a comprehensive digital archive system that incorporates advanced imaging functions to satisfy a variety of business needs. RVI Complete for Windows easily integrates with existing business applications and is user-friendly and scalable from a pilot project to an enterprise-wide solution.



Remain Software is a leading provider of DevOps and application lifecycle management solutions with over 30 years of experience. We are committed to delivering best-in-class solutions and services that meet the unique needs of our customers. Our latest innovation is Octo, a new web-based platform that supports our flagship product, TD/OMS. Our global team of experts and partners provides service and support in multiple languages. We are constantly innovating and developing new solutions to meet the changing needs of our customers.

remainsoftware.com ■ info@remainsoftware.com / 757-550-1560

➤ Application Development

Remain API Studio

Remain API Studio is a powerful and intuitive development environment that makes it easy to create, build, manage and test REST APIs. With its rich and visual editor, easy import and export capabilities, and built-in documentation, you can be confident that your APIs will be efficient and compliant.

API Studio works seamlessly with TD/OMS, our DevOps platform, to manage and modernize applications. With TD/OMS, you can track changes to your APIs, manage their lifecycle and ensure all components are always current regardless of platform.

TD/OMS

TD/OMS is a flexible, cost-effective and easy-to-use DevOps tool that will help you mitigate these risks. It provides a real-time view of your application components, dependencies and configuration, so you can identify and address potential problems before they cause an outage or disruption. TD/OMS also boosts team collaboration, productivity and time savings, so you can get your software to users and customers faster and with fewer headaches.

➤ Tools and Utilities

XREF

Remain Software’s XREF DevOps tool will help you quickly and easily identify and troubleshoot problems caused by unknown dependencies.

TD/OMS, our flagship product, includes XREF as part of the standard Remain Software DevOps platform. With its intuitive interface and powerful search capabilities, XREF will help you improve your team’s collaboration and productivity.



Tired of ALM, or SCM solutions that leave you stranded, and the only thing that gets upgraded is your yearly maintenance price?

Leave the stranded software. Embrace DevOps.
Embrace unstoppable growth.

Does Your ALM or SCM Solution Leave You Stranded?



Contact us today to make the SWITCH to DevOps!

Make the move to DevOps with Remain Software and their cutting-edge solutions.

They are your lifeline to seamless integration, continuous innovation, and streamlined processes.

Unleash your team's potential and drive business success with Remain Software.

Start Your DevOps Journey and Scan the QR Code



Remain Software Inc.
130 W. Plume Street Unit C,
Norfolk, VA 23510
United States
usa.office@remainsoftware.com
Tel: 757-550-1560

Remain Software HQ
Remain B.V. Dukatenburg
82b 3437 AE Nieuwegein,
The Netherlands
info@remainsoftware.com
Tel: +31 (0) 30-6005010

PRODUCTS

TechChannel

SPONSORED CONTENT



Rocket Software partners with enterprises of all industries to solve their most complex IT challenges across infrastructure, data and applications—with solutions that simplify, not disrupt, their modernization journey. Trusted by more than 10,000 customers, Rocket enables seamless in-place modernization with our tools, preserving IBM i reliability and security while embracing the benefits of the cloud. Rocket Software simplifies IBM i modernization as we embrace the challenges of an evolving era with our users.

rocketsoftware.com ■ 855-577-4323

➤ Data Management

Rocket Data Intelligence

Utilize a self-service data intelligence platform built on automation that spans cloud, distributed and mainframe infrastructures. Our data intelligence software can manage the complex environments of the world's largest organizations, regardless of how they are using their data.

➤ Modernization

Rocket Continuous Modernization

Unlock the potential of your IBM i platform with Rocket Software's cutting-edge solutions. Elevate user and developer experiences, foster a customer-centric, digital-first approach and streamline operations with automated deployments and open-source integrations. Our suite empowers your organization to adapt, innovate and thrive in a fast-paced world while ensuring compliance and optimizing productivity. Modernize your IBM i applications seamlessly, embrace agility and stay ahead of the curve with Rocket Solutions for IBM i.

Rocket DevOps

Rocket DevOps (formerly Rocket Aldon) allows companies to implement CI/CD, enabling freedom of experimentation throughout the development and deployment lifecycles. You can utilize built-in project management functionality or integration with third-party tools. This provides developers and IT teams with environments that refine and test new user experiences, technologies or processes needed to enable continuous innovation. The built-in automated workflows in our mainframe DevOps tools also eliminate reliance upon error-prone manual workflows, accelerate development and improve productivity across the workflow.



Service Express is an industry-leading data center solutions provider specializing in managed services, hardware solutions, cloud hosting, multivendor maintenance and more. As a gold-level IBM Business Partner, Service Express helps IBM Power customers running IBM i and AIX maximize their return while ensuring critical data is available and secure. Customers worldwide trust Service Express to maximize infrastructure strategy, maintain systems and deliver flexible solutions for their data centers.

serviceexpress.com ■ IBMSales@serviceexpress.com / 800-940-5585

Cloud

Cloud Hosting

Our cloud is built on IBM Power and IBM FlashSystem storage technology, delivering secure, scalable, resilient solutions to meet your specific requirements. With IaaS for IBM i and AIX, you can consolidate workloads onto fewer systems, increase server utilization, reduce capital and management costs, and virtualize memory, processor and I/O resources.

Hardware

IBM Power and Storage

Our team has the expertise to configure, install and implement your IBM Power servers, HMC, LPAR configurations and storage solutions. With years of experience and knowledge, we understand a wide range of IBM i applications to enhance usability and operability in your data center. Our consultative approach delivers customized hardware solutions that fit your business goals and long-term investments.

Managed Service Provider

Managed Services

With our managed services offering, you can count on our IBM-certified administrators to work alongside your team to ensure you get the most from your IBM systems. Our proactive support delivers a hands-on approach to system health, security and compliance—keeping you one step ahead of downtime.

OS Upgrades

Our experienced system administrators know compatibility requirements, address risk and implement testing to ensure a successful upgrade. While OS upgrades can take weeks of preparation and planning to run smoothly, we make the process as easy as possible for you.

What Is an IBM Business Partner, Really?

This question came up this week when discussing upgrading two systems from IBM i 7.3 to 7.5. The word “partner” means a lot to me.

First, what is an IBM Business Partner? Well, that definition can be a little broad. I’d argue that a Business Partner is the liaison between customers and IBM. We represent customers to IBM, and we represent IBM to customers. Business Partners primarily consist of IBM technology experts, hardware resellers, software resellers and ISVs.

The key word in Business Partner is “**partner**.” The best partnerships have regular, effective communication. At Service Express, we view ourselves as an extension of every customer’s business. There’s value in that line of thinking.

There’s plenty of partner-focused IBM education happening. It seems like a week doesn’t go by that we’re on webinars and conference calls learning about what’s coming down the pike regarding technology and pricing changes, product withdrawals and replacements and the like.

Theory is great, but hands-on practice is even better. Will your Business Partner upgrade you to IBM i 7.4 as their *first 7.4 upgrade*? Do they have a Power10 in place to test things out? What about new IBM external storage? Or a POWER-based Hardware Management Console?

Ever wonder why your Business Partner calls you every couple of months? No, it’s not to sell you something. We’re checking in to tell you about what’s coming next. It’s to let you know your machine just went end of marketing, so it may only have a few years left. It’s to remind you that 7.4 was released in 2019, and on average, you’ll get seven years out of it; maybe 7.5 would be a good idea in advance.

We want to know about your challenges. We want to ensure you’re getting good service. That relationship is what has the most value for both parties.

Every IBM Business Partner is different. We all have our strengths and weaknesses. A good partner will be honest about what they can and can’t do well. A good partner isn’t afraid to tell you no instead of saying yes and then dancing to figure out a half-baked solution.



STEVE PITCHER
SALES CONSULTANT & SECURITY ENGINEER



Steve has been involved with IBM i since 2001, primarily in the manufacturing and distribution industries. Over that period, he’s been a systems administrator, developer, IT Manager and IT Director. Steve brings expertise in security, IBM Lotus Domino and WebSphere. A longtime IBM Champion, first as part of the inaugural group for IBM Collaboration Solutions (2011) and then as an IBM Champion for Power Systems (2016–present), you’ll find Steve speaking at events around the world about IBM i administration, modernization and security.



Established in 1982, Software Engineering of America (SEA) is a worldwide leading provider of optimization, security and monitoring solutions. SEA’s customers include nine of the Fortune 10 and over 90% of the Fortune 500.

SEA provides solutions for the IBM i including software for multi-factor authentication, auditing and compliance, exit point monitoring, user authority management, system message and resource monitoring, password management, encryption, SIEM integration and more.

seasoft.com ■ info@seasoft.com / 516-328-7000

Security

iSecurity Suite: End-to-End Security for IBM i

iSecurity is a comprehensive and user-friendly security, auditing, compliance and reporting solution for the IBM i environment.

The iSecurity suite provides end-to-end security for IBM i systems, including solutions for exit point monitoring, anti-ransomware, antivirus, multifactor authentication, audit and compliance reporting, self-service password reset, encryption and more.

iSecurity provides effortless compliance with mandatory security regulations and auditor requirements, including hundreds of IBM i security reports for meeting regulatory and auditing requirements.

iSecurity Multi Factor Authentication (iSecurity MFA)

iSecurity Multi Factor Authentication (iSecurity MFA) is a powerful solution that provides multi-factor authentication (MFA) to secure IBM i sign-ons.

iSecurity MFA requires users to verify their identities with two or more authorization factors before gaining access to IBM i servers and data, improving security and satisfying many governmental, regulatory and insurance requirements.

iSecurity MFA is a pure IBM i based MFA solution and is 100% installed and runs on IBM i servers.

Systems Management

absMessage: IBM i Message and Resource Monitoring

absMessage is a comprehensive IBM i message and resource monitoring solution that allows you to centralize monitoring across your entire IBM i environment from a single point of view. With absMessage, IT responders are alerted when events occur, unresolved issues are escalated and automated responses can resolve events without IT involvement. IBM i specific ServiceNow tickets can be generated from monitored events.

absMessage monitors resources and manages messages through multiple interfaces, including a Web UI, mobile devices, 5250 green screen, as well as a Java GUI.



As an IBM Platinum Business Partner, Tectrade is adept at managing and optimizing the performance of critical workloads in the cloud and data centers with IBM i, AIX and Linux operating systems.

From monitoring and managing all the components that impact system stability, to updating the hosted applications, backing up critical data and reacting to alerts 24-7, Tectrade ensures its clients spend their time utilizing cloud applications to drive business value, rather than managing them.

tectrade.com ■ info@tectrade.com

Application Modernization

Tectrade Cloud IBM i Services

Tectrade Cloud IBM i Services are designed to optimize the availability and performance of critical workloads running on IBM i and IBM Power Systems. Our experts provide the entire hybrid infrastructure in an OPEX managed service wrap and support platforms on-premises, hosted in data centers or the Tectrade PowerCloud.

We can take over the burden of mundane operations, allowing you to focus on business transformation with the confidence that your platforms are in safe hands.

Cloud

Tectrade Cloud AIX Services

Tectrade has been managing critical AIX workloads running on IBM Power Systems for decades. Our experts support platforms on-premises, hosted in a third-party data center or in the Tectrade PowerCloud.

Our multicloud platform allows organizations to meet changing demands, increasing and scaling back resources.

We provide the entire hybrid infrastructure in an OPEX managed service wrap. This means end-to-end security across the whole hybrid environment, while only paying for what you use.

Linux on Power

Tectrade Cloud Linux on Power Services

Running complex Linux on IBM Power Systems workloads at peak performance around the clock is an important but time-consuming activity. Tectrade’s Cloud Services enable businesses to use technology to scale up or scale back as needed.

Our multi-cloud platform is a stepping stone to running private, public or hybrid cloud environments. We optimize the availability and performance of critical workloads on-premises, hosted in a third-party data center or in the Tectrade PowerCloud.



TL Ashford produces software to generate bar code labels and forms from IBM Power Systems running IBM i.

Barcode400 is the No. 1 labeling solution for IBM i to generate bar code labels. Barcode400 is used in every industry by thousands of companies around the world. TLAForms is fast becoming the premier solution to convert traditional IBM i spool files into full-color, professional forms.

Barcode400 and TLAForms are the most feature-rich, cost-effective software solutions available for IBM i, backed by exceptional tech support.

Download free trial software at tlashford.com.

tlashford.com ■ johnp@tlashford.com / 800-541-4893

Tools and Utilities

Barcode400

Barcode400 provides a simple design tool to create labels. Add text, bar codes including 2-D bar codes, images and more while utilizing data directly from your IBM i files and applications. Labels can be printed to hundreds of thermal transfer printers as well as HP and compatible models. Labels can even be generated as PDF documents. Barcode400 has been integrated with nearly every ERP and WMS application software on IBM i, as well as thousands of in-house written applications. We also provide compliance labels at no additional charge for more than 500 companies in automotive, retail, healthcare and more.

TLA Forms

TLAForms allows you to use data from existing IBM i spool files to create professional forms with no programming. Create fields from IBM i spool file data. Place data on a form as text, bar codes or images. Use SQL to retrieve data from your IBM i files. Use actions to condition objects on the form to easily create a header page, detail page(s) and last page. Or use actions to condition output. For instance, email the form when an email is available. If an email is not available, print the form. The Form Design Interface makes designing forms easy and no programming is required to generate forms.

Take a Deeper Look at Your Software Solutions

ORGANIZATIONS typically acquire applications to solve specific issues, using software with a single purpose in mind. Such was the case with a customer who had acquired our software to generate as many as 40,000 forms each day! Our work with them was to ensure the application ran as quickly as possible given the significant processing involved. Near the end of a conversation, almost as an afterthought, the customer mentioned their need for a more effective check printing solution.

This made me think about how much I enjoy delving into applications I use to uncover functionality that may not be readily apparent. It’s like walking through the forest and catching a glimpse of a bear as it skitters away. The discovered feature may be something I had not

even considered, but upon finding it, it provides an opportunity to improve functionality or streamline a task.

It turns out our forms application also includes the functionality to generate checks. The MICR font is an integral part of the product, and checks can be generated to printers capable of printing with magnetic ink and as PDFs for archiving, providing our customer with more functionality and value.

Sometimes we can become so focused on the task at hand that we overlook other valuable features. This is understandable. We’re all busy and under pressure to solve problems and deliver results. It’s worth taking time, however, to broaden the view, to discover hidden functionality in a solution you already use, to maximize



MIKE SCHUETT
DIRECTOR OF MARKETING
MIKES@TLASHFORD.COM

Mike Schuett has worked in labels and forms on IBM i for nearly 30 years.





Xorux is an independent company that develops performance monitoring and reporting tools XorMon, LPAR2RRD and STOR2RRD.

LPAR2RRD is a performance monitoring and reporting tool for server virtualization on IBM Power Systems including IBM i and other platforms as well.

STOR2RRD is a performance monitoring and reporting tool for storage systems, SAN and LAN switches.

XorMon combines both tools into a single pane of glass.

xorux.com | info@xorux.com / 770-712-9887

➤ Performance

LPAR2RRD

LPAR2RRD is a performance monitoring and reporting tool for IBM Power Systems, collecting basic data directly from HMC console using REST API. It's a great way to get information about PowerVM utilization from a single LPAR through a physical box to all resources managed by the HMC. All environments are supported: AIX, VIOS, Linux and IBM i.

STOR2RRD

STOR2RRD is a performance monitoring and reporting tool for storage systems, SAN and LAN switches. If you need to know how your storage environment is utilized, response times or any other key metrics, use STOR2RRD. With this solution you can monitor almost any storage and see all storage systems in a single pane of glass.

XorMon

Performance monitoring tool for server, storage, DB, cloud, SAN and LAN.

Gives you the ability to see the utilization of the IBM Power Systems, storage systems, SAN switches, DBs and more.

2024	SOLUTIONS DIRECTORY	Resources
------	------------------------	-----------



SOLUTIONS DIRECTORY 2024 PRODUCT LAUNCH

TechChannel

SPONSORED CONTENT

As more companies recognize the importance of speeding up innovation and accelerating their digital transformations, it's critical for ISVs to keep pace with new, innovative products, tools and services offerings to deliver what customers need, when they need it, adding value and driving better business outcomes.

The following partners and ISVs are launching new products or offerings in 2024, contributing to the vibrant IBM i and AIX partner ecosystems with enthusiasm. We encourage users to investigate these availabilities on the platform:

New Products, Tools and Services Keep Customers Up to Date and the Power Systems Ecosystem Thriving

Business Intelligence/Analytics

Embedded Business Intelligence by Lansa

Turn data into action with LANSAs business intelligence solutions. Uncover trends and opportunities through user-friendly, AI-powered tools that aid all types of users in generating insights. Create dynamic dashboards and reports for collaborative data exploration, empowering smart choices at the point of decision-making.

[Learn more about Lansa and Embedded Business Intelligence on page 24 →](#)

Cloud

mPower Cloud Migration Factory by Meridian IT

Meridian's mPower Cloud Migration Factory is a comprehensive solution that helps businesses of all sizes migrate their workloads to the cloud quickly, securely and cost-effectively. Our proven methodology minimizes downtime and disruption to your business and ensures the successful migration of workloads to the cloud.

[Learn more about Meridian IT and mPower Cloud Migration Factory on page 27 →](#)

IBM i USER GROUP ROUNDUP

One sure constant in the IT world is change—and with it, the need to learn and grow alongside evolving technology. Keeping up with the rapid pace of change in IT can be challenging.

That's where local user groups come in, providing valuable opportunities for networking, education and connection. From conferences, student activities, virtual meetings, competitions and more, connecting with local user groups helps members plug into the Power Systems community, sustains the IBM i platform and fosters innovation.

Are you curious about active regional user groups around the U.S. and Canada? Check out these user groups for a sampling of events and networking opportunities in your area.

Canada

Ontario (Toronto)—Toronto Users Group

[tug.ca](#) / [admin@tug.ca](#) / 20 Bead Fernway, Toronto, Ontario M2J 4L3

The Toronto Users group's purpose is to provide a professional forum for presentations and exchange the ideas that pertain to IBM midrange computers as well as related subjects for users, from the technical management and end user perspectives. Meetings are usually held every second last Wednesday evenings of the January, March, May, September and November. Zoom meetings are conducted each alternate month.

United States

California (Costa Mesa)—Orange County Educational Advancement Network (OCEAN)

[ougsc.memberclicks.net](#) / [info@oceanusergroup.org](#)

The Orange County Educational Advancement Network (OCEAN) User Group's mission offers an affordable educational resource by providing the latest information on both IBM and multiplatform technology. Educational sessions are presented by guest speakers at monthly meetings, webinars, special events and the annual Technical Conference and Vendor Solutions Expo. Meetings are scheduled monthly and are held January to November. The primary focus of the meetings is to discuss the IBM Power Systems platform and IBM i OS while covering topics related to technical areas and career development. The user group focuses on how to innovate and thrive with IBM i, while offering full technical presentations that focus on all aspects of IT from strategic directions to today's latest technologies and hands-on workshops on learning how to tune up your skill sets.

COMMON User Group

[www.common.org](#) / [common@common.org](#) / 800-777-6734 or 312-279-0192

COMMON is the world's largest association of IT professionals that focus on IBM and related technologies and is focused on enhancing the careers of its members. By attending a COMMON event, you will have the opportunity to choose educational sessions that best support your educational goals while networking with others in the ecosystem.

Illinois (Oak Brook)—Omni Users Group

omniuser.org / mikepavlak+omni@gmail.com or jromeh+omni@gmail.com / 2021 Midwest Road Suite 200, Oak Brook, IL 60523

The Omni User Group is Chicago’s largest and oldest association of computer users. The user group specializes in the IBM midrange platform and associated computing devices. Omni’s dinner meetings are held monthly to share educational and practical experiences among the IBM i community.

LUG (Large User Group)

ibmilug.ihost.com / lbenedict@the-lug.com / 507-533-8035 or 507-250-2788

LUG (Large User Group) was formed in 1994, incorporated in Minnesota in 1999, and has been going strong ever since. LUG consists of 90 large companies that have a significant investment in IBM i, with members using more than 225 million CPW. Recognized leaders in their industries, member companies are present in finance, manufacturing, insurance, retail, petroleum and media. At LUG meetings, there are dozens of presentations, breakout sessions, and opportunities for dialogue. Each meeting includes in-depth, technical and strategic presentations on varied topics members are interested in, excluding marketing and sales. Working meetings are held three times per year, generally in February, June and September, at the IBM offices in Rochester, Minnesota, the birthplace of the IBM i.

Michigan (Rochester)—Southeast Michigan iSeries Users Group

semiug.org / webmaster@semiug.org / Southeast Michigan IBM i User Group, P.O. Box 80135 Rochester, Michigan 48308

The Southeast Michigan IBM i User Group’s mission is to provide a forum for IBM i users to gain new skills, stay informed about upcoming changes on the platform and network with other IBM i professionals. Meetings take place monthly September through June (excluding December). Many of the speakers at the user group’s meetings are current or former IBM i experts who have a vast wealth of knowledge to share with the attendees.

Michigan (Grand Rapids)—West Michigan IBM i Users Group

wmsug.net / Chairperson: Chris Van Liere: 269-660-7777 ext. 7876 • chairperson@wmsug.net / Program Director: Leo Whitaker, Jr.: programdirector@wmsug.net • 616-530-6600

West Michigan IBM i User Group (WMSUG) is a nonprofit organization dedicated to presenting timely information to CIOs, directors, managers, analysts and programmers who utilize the IBM i platform in their businesses. WMSUG meetings are typically held monthly September through May.

Mid-Atlantic Group of IBM i Collaborators

magic-ug.org / admin@magic-ug.org / MAGiC, 4658D Haygood Road, Virginia Beach, VA 23455

The Mid-Atlantic Group of IBM i Collaborators (MAGiC) was founded to provide a place to collaborate and to learn new IBM i skills from industry experts and share ideas with other members. MAGiC provides informative monthly online sessions, an annual two-day workshop focused on open source and an annual conference. MAGiC has become a great resource for IBM i professionals to gain valuable insights and training from knowledgeable industry experts, designed to help us shift our thinking and approaches from reactive to proactive, from status quo to visionary, from keeping up with the industry to leading from within it.

Minnesota (St. Paul)—QUSER

quser.org / QUSER, P.O. Box 40062, Saint Paul, MN 55104

The QUSER Group is an excellent opportunity to network with peers, share ideas and tips, and become knowledgeable on topics relevant to the IBM i community. Becoming a member allows for access to additional support provided by IBM, COMMON and other corporate sponsors, all of which are committed to the success of QUSER Group. These sponsors provide special guest speakers, contributing to education funding and provide discounts to attend the popular conferences such as COMMON.

New Hampshire (Peterborough)—New Hampshire Midrange Users Group

nhmug.org / Follow @NHMUG1 on Twitter

The New Hampshire Midrange User Group is a nonprofit organization working to grow and strengthen the IBM i community. The user group meets within and the surrounding areas of the state of New Hampshire as well as Vermont, Maine and Massachusetts. The New Hampshire Midrange User Group meets several times in September through June but does not have any meetings during the month of the Northeast User Group Conference. NHMUG actively participates in the Northeast User Groups Conference that is held each spring in Framingham, Massachusetts.

New York (Syosset) – Long Island Systems Users Group (LISUG)

lisug.org / Long Island System User Group (LISUG), 338 Jericho Turnpike, Suite 101, Syosset, NY 11791-3504

The Long Island System User Group (LISUG) is dedicated to the education of system professionals that utilize the IBM Power Systems platform, including IBM i, System i, iSeries and AS/400. The user group has become one of the largest and most technical user groups in the country, consistently advancing the knowledge of all computer users on all platforms. The user group meets every month (with the exception of June, July and August) and consists of a pre-meeting followed by a cocktail hour, dinner and then the main presentation. The knowledgeable speakers and members make for a very interesting experience, and LISUG attracts some of the industry’s top speakers, including professionals from IBM Rochester and Toronto labs. In May they hold their May Education Day.

Tennessee (Nashville)—IMUG Midrange Users Group

imugtn.org / 270-885-9011 / MUG, 718 Thompson Lane, Suite 108-266, Nashville, TN 37204

IBM Midrange User Group (IMUG) is an organization serving the IBM Power Systems community in Nashville and its surrounding areas. Members can meet in person or attend the video conference online for each monthly meeting. As an IMUG member, you will have the opportunity to attend presentations from a network of industry leaders and become a part of a supportive community of local IT experts.

The Central Texas IBM i User Group CTXiUG

ctxiug.blogspot.com / simon@rpgpggm.com

The Central Texas IBM i User Group (CTXiUG) is a community of passionate technology experts focused on sharing knowledge about the IBM operating system IBM i and everything related to it. No topic is too unique or niche for CTXiUG. The group was founded in 2020 and is always looking for members in central Texas, including metropolitan Austin and San Antonio areas. The user group meets every other month and has successfully brought a host of IBM champions and other accomplished people in the IBM i community to present exciting new ideas to the group. Each meeting is typically accessible online to anyone who registers.

Wisconsin (Elm Grove)—Wisconsin Midrange Computer Professional Association

wmcpa.org / president@wmcpa.org / WMCPA, P.O. Box 492 Elm Grove WI, 53122-0492

The Wisconsin Midrange Computer Professional Association’s purpose is to allow members to exchange information regarding the use and growth of the midrange system. The dinner meetings are held monthly from September through May—with the exception of March—and each meeting consists of two sessions by a guest speaker. In March, the user group holds its annual Spring Technical Conference, which is a two-day event. Membership is recommended to any person, company, group or organization which has a midrange computer system, such as an AS/400, iSeries, System i or IBM i on Power Systems installed or on order, or to anyone who is directly involved in the creation of software and hardware related to midrange systems.

APIs

Midrange Dynamics North America 28

- MDRest4i

Profound Logic 31

- Profound API

APPLICATION DEVELOPMENT

LANSA 24

- Professional Low-Code Development

Midrange Dynamics North America 28

- MDChange

ProData Computer Services 29

- DBU
- RDB Connect
- SQL/Pro

Profound Logic 31

- Profound.js

Remain Software 37

- Remain API Studio
- TD/OMS

APPLICATION MODERNIZATION

ARCAD Software 8

- ARCAD CodeChecker
- ARCAD for DevOps
- ARCAD iUnit
- ARCAD Transformer
- ARCAD Verifier
- DROPS

CM First 11

- CM evolveIT for IBM i
- Managed Application Services

Fresche Solutions 17

- Application Modernization and Transformation
- Green Screen Modernization Solutions
- Digital Solutions and Services
- X-Analysis

LANSA 24

- IBM i Application Modernization

Profound Logic 31

- Flexible Code Transformation Service

Tectrade 43

- Tectrade Cloud IBM i Services

BUSINESS INTELLIGENCE/ANALYTICS

Flagship Solutions Group 16

- IT Infrastructure Analytics Solutions

LANSA 24

- New Embedded Business Intelligence

Raz-Lee Security 34

- iSecurity AP-Journal
- iSecurity Audit

BUSINESS MANAGEMENT

HarrisData 22

- AppsInHD HRIS
- HarrisData ERP
- HarrisData Financials

CLOUD

Flagship Solutions Group 16

- Managed Cloud Services

Fresche Solutions 19

- IBM i (AS/400) Operations Management (On-Premises/Cloud/Hybrid)

Meridian IT 27

- New mPower Cloud Migration Factory

Racksquared Data Centers 32

- IBM Power in the Cloud Solutions
- Intel Cloud Solutions

Service Express 40

- Cloud Hosting

Tectrade 43

- Tectrade Cloud AIX Services

COMPLIANCE/SECURITY

Fresche Solutions 17

- Fresche Compliance and Security Solutions

DATABASE

Midrange Dynamics North America 28

- MDRapid

Raz-Lee Security 34

- iSecurity DB-Gate

DATA MANAGEMENT

Meridian IT 27

- Backup as a Service

Rocket Software 39

- Rocket Data Intelligence

DATA MASKING

ARCAD Software 8

- DOT Anonymizer

DOCUMENT IMAGING

Real Vision Software 36

- RVI Cloud
- RVI for IBM i
- RVI for Windows

EDI

LANSA 24

- Business Process Integration

EDUCATION

imPower Technologies 23

- Online Course: IBM i Concepts and Operations
- Online Course: Programming in ILE RPG
- Workshops: RDi and Modular Programming and SQL

ERP

Friedman Corporation 21

- ERP for Kitchen and Bath Cabinet Manufacturers
- ERP for Manufacturers of Doors, Windows and Coverings
- ERP for Furniture Manufacturing

HA/DR/BACKUP

Dynamic Solutions International 15

- iDSI620-D24
- iDSI620-D48
- iDSI620-EV0/EVD
- DSI VTL Conductor

Fresche Solutions 19

- IBM i (AS/400) HA/DR and Backup Services

Maxava 26

- Maxava HA Enterprise+
- Maxava CPR

Racksquared Data Centers 32

- IBM Power Disaster Recovery Solutions
- IBM Power Cloud Backup Solutions

HARDWARE

Service Express 40

- IBM Power and Storage

LINUX ON POWER

Tectrade 43

- Tectrade Cloud Linux on Power Services

MANAGED SERVICE PROVIDERS

Meridian IT 27

- Enterprise Managed Services

Racksquared Data Centers 33

- IBM Power Colocation Solutions

Service Express 40

- Managed Services
- OS Upgrades

MODERNIZATION

Rocket Software 39

- Rocket Continuous Modernization
- Rocket DevOps

OFFICE AUTOMATION AND OFFICE SUPPORT

Computer Keys 12

- KeyesMail
- KeyesOverlay
- KeyesPDF
- kLink

DRV Technologies..... 13

- FormFlex
- SpoolFlex

Fresche Solutions 20

- Formtastic

PERFORMANCE

Xorux..... 46

- LPAR2RRD
- STOR2RRD
- XorMon

SECURITY

Flagship Solutions Group 16

- Security Solutions

Raz-Lee Security 35

- iSecurity Anti-Ransomware
- iSecurity Antivirus
- iSecurity Firewall
- iSecurity Multifactor Authentication

Software Engineering of America 42

- iSecurity Suite: End-to-End Security for IBM i
- iSecurity Multi Factor Authentication (iSecurity MFA)

SERVICES/CONSULTING

Fresche Solutions 20

- IT Strategy and Discovery Solutions
- Staffing and Managed Application Services

Racksquared Data Centers..... 33

- Managed IT Services

SYSTEMS MANAGEMENT

DRV Technologies..... 13

- MessageFlex

Maxava..... 26

- Monitor Mi8

Racksquared Data Centers..... 33

- IBM Power Administration Services

Software Engineering of America..... 42

- absMessage: IBM i Message and Resource Monitoring

TOOLS AND UTILITIES

Logicor..... 25

- GlobalShip iSeries
- GlobalShip iSeries Pack Module

Remain Software..... 37

- XREF

TL Ashford..... 44

- Barcode400
- TLA Forms

WEB DEVELOPMENT

Fresche Solutions 20

- Web and Mobile Development

2024 COMMON PATHWAY TO SUCCESS



BONITA SPRINGS, FL
SEPTEMBER 16 - 18



TORONTO, CA
NOVEMBER 4 - 6



FEBRUARY 13 - 14



MAY 20 - 23
FORT WORTH, TX



WWW.COMMON.ORG

2024
SOLUTIONS
DIRECTORY

