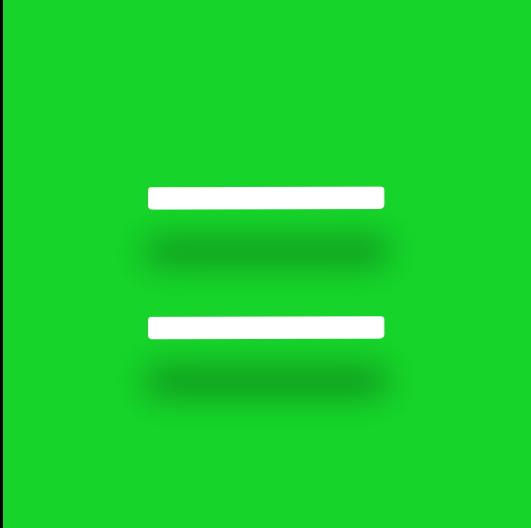
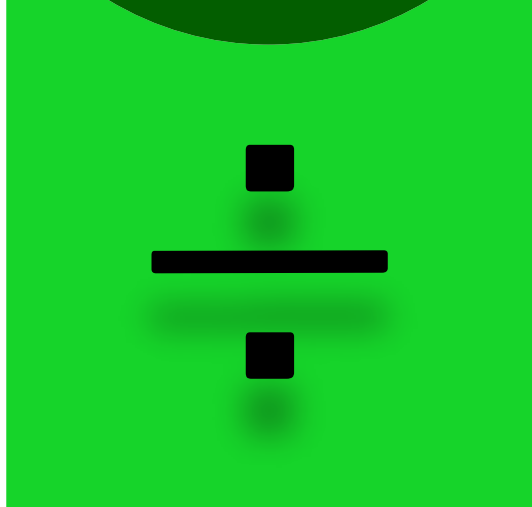
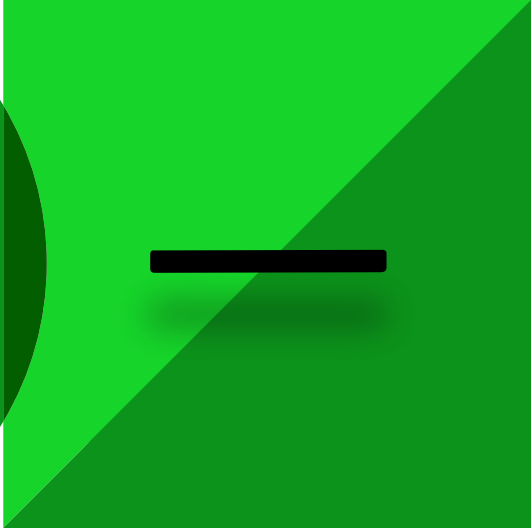
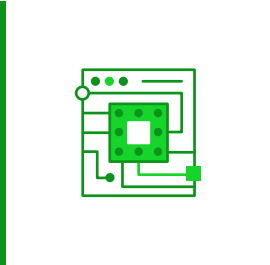
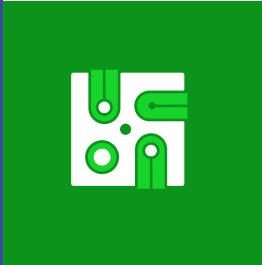
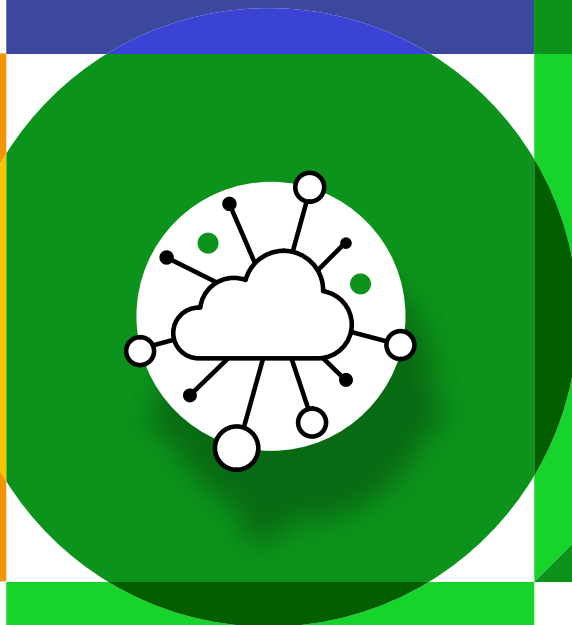
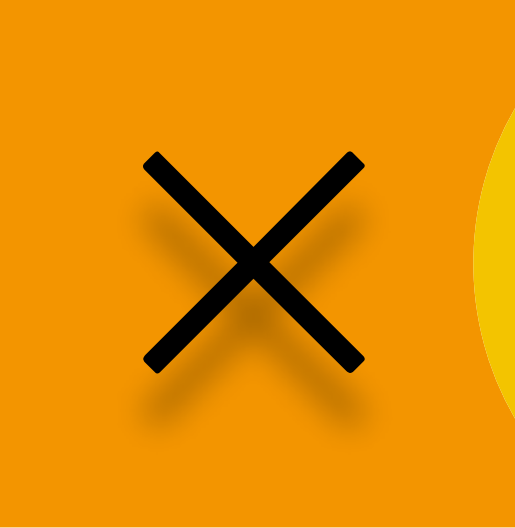
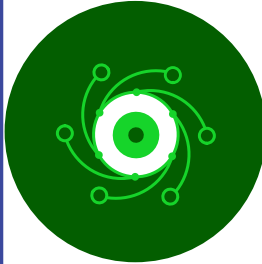
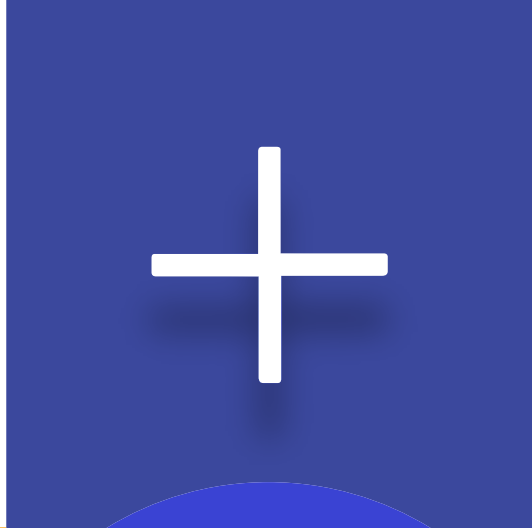
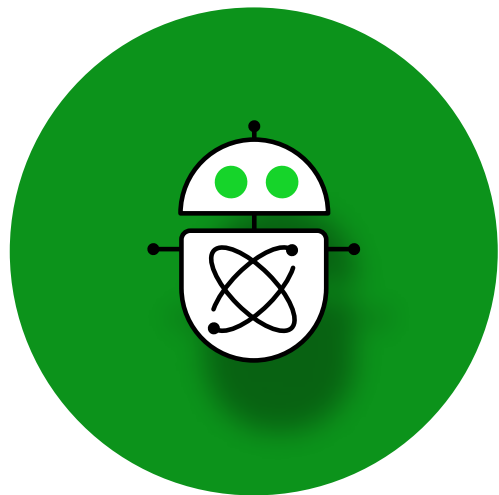
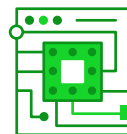
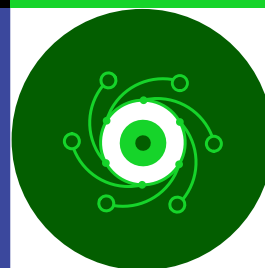
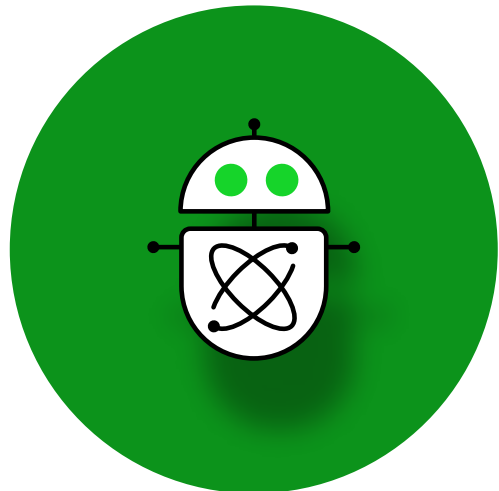


SOLUTIONS DIRECTORY



SOLUTIONS DIRECTORY



Upgrade IBM i while active

Migrating to Power10 or a cloud hosted system.

MAXAVA HAS YOU COVERED!

www.maxava.com

UPGRADE NOW



MAXAVA

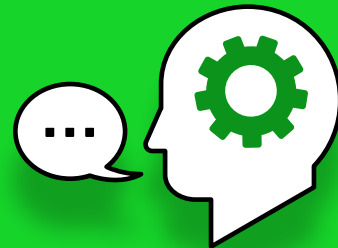


TechChannel's Best Straight to Your Inbox

NEARLY

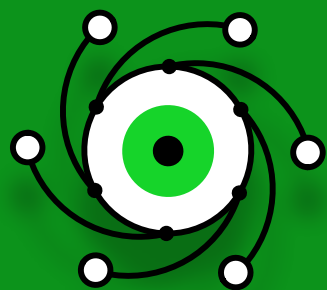
100%
of readers say

...

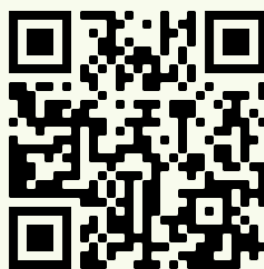


TechChannel newsletters are trusted sources of relevant and useful IT news and information.* Join and learn from a community of tech experts, luminaries and professionals who are shaping the future.

*TechBeat and Webinar surveys, August and September 2024



SUBSCRIBE NOW



TechChannel.com/subscribe

TechChannel

TechChannel

TechChannel.com

953 Westgate Drive, Suite 107
St. Paul, MN USA 55114
612-339-7571

Publishing Director
Mari Adamson-Bray

Director of Strategic Growth
Lisa F. Kilwein

Marketing and Business
Development Manager
Arin Seeger

Partner Success Manager
Chloe Pemberton

Editor-in-Chief
Evelyn Hoover

Senior Editor
Andrew Wig

Managing Editor
Emma Pitzl

Art Directors
Mike Kooiman
Kelsey Hanscom

Project Manager
Maddie Burke

Audience Development
Chris Birkholm
Hannah Johnson

Webinars
Janine Donnelly, Director
Melissa Kusilek, Manager

Subscriptions:
TechChannel.com/Subscribe

Content inquiries:
awig@mspcagency.com

Sales and Marketing inquiries:
lkilwein@techchannel.com

Copyright 2025 by MSPC,
a division of MSP Communications.

mSPC

EDITOR'S LETTER

Your Guide to Empowering Your Business

Welcome to this year's TechChannel Solutions Directory—your go-to resource for discovering **cutting-edge software and services designed to empower your business**. We're thrilled to bring you a lineup of innovative solutions from our trusted business partner community to help you make informed buying decisions as you plan for success and growth.

The Solutions Directory is more than just a list of offerings. It's a roadmap to possibilities, tailored to meet the evolving demands of today's technology landscape. Whether you're searching for tools to **enhance operational efficiency, streamline data management** or **break new ground in innovation**, the directory is here to guide you toward the right choices for your organization's unique needs.

Be sure to check out our interview with Evolving Solutions CTO Michael Downs on **how to make better technology decisions** to modernize for growth. We also included a handy checklist based on our interview with Downs. You'll find the feature story on [page 4](#).

On behalf of TechChannel, I want to thank our business partners for their steadfast support and dedication, and you, our readers, for trusting us as your resource for the best in enterprise technology. Together, we're advancing the future of business.

Here's to another year of innovation and opportunity!

EVELYN HOOVER
EDITOR-IN-CHIEF, TECHCHANNEL



- 4 How to Make Better Technology Decisions to Modernize for Growth
- 6 16 Ways to Streamline Your Technology Decisions
- 8 New Products, Tools and Services

COMPANY AND PRODUCT LISTINGS

- | | | | | |
|--|---|---|---|---|
| 9 CloudFirst Flagship Solutions
– Cloud and Hybrid Cloud
– Cybersecurity | 16 Lightedge
– Cloud and Hybrid Cloud | 23 Profound Logic
– AI
– Application Modernization | 30 Remain Software
– Application Development
– Tools and Utilities | 36 Software Engineering of America
– Security
– Systems Management |
| 10 CM First
– Application Modernization | 17 M81
– Systems Management
– Tools and Utilities | 24 Programmers.io
– Application Development
– COBOL
– DevOps
– EDI
– Modernization | 32 Rocket Software
– Data Management
– DevOps
– Modernization | 38 TL Ashford
– Tools and Utilities |
| 11 Computer Keys
– Office Automation and Office Support | 18 Maxava
– HA/DR/Backup
– Security
– Systems Management | 26 Racksquared Data Centers
– Cloud
– HA/DR/Backup
– Managed Service Providers
– Services/Consulting
– Systems Management | 33 RVI (Real Vision Software)
– Document Imaging | 39 PERSPECTIVE: “Expanding Horizons in Barcoding” by Mike Schuett, Director of Marketing, TL Ashford |
| 12 DRV Technologies
– Office Automation and Office Support
– Systems Management | 19 Meridian IT
– Cloud
– Data Management
– Managed Service Providers | 28 Raz-Lee Security
– Business Intelligence/ Analytics
– Database
– Security | 34 Service Express
– Cloud
– Hardware
– Managed Service Provider | 40 Xorux
– Performance |
| 13 HarrisData
– Business Management | 20 Midrange Dynamics North America
– APIs
– Application Testing
– Data Management
– DevOps | | 35 PERSPECTIVE: “Why Your IBM i Environment Absolutely Needs Antivirus Protection” by Steve Pitcher, Sales Consultant and Security Engineer, Service Express | |
| 14 imPower Technologies
– Education | 21 ProData
– Application Development | | | |
| 15 LANSa
– Application Development
– Application Modernization
– Business Intelligence/ Analytics
– EDI | | | | |

RESOURCES

- 42 **IBM Power User Group Roundup**
- 46 **Index by Technology Category**

S
T
H
E
N
T
H
E
N
C
O
N

How to Make Better Technology Decisions to Modernize for Growth

Evolving Solutions Chief Technology Officer Michael Downs shares his insights to help your organization make holistic, scalable technology decisions

BY JENIFER SERVAIS

Artificial intelligence (AI), data center management and cybersecurity are all the rage in tech. Or so they seem. But organizations must consider which solutions are right for their business.

It's important to consider how to balance these trends with modernizing your IT environment and ensuring your company stays agile and innovative to achieve growth.

In a recent conversation Michael Downs, CTO of technology solutions provider Evolving Solutions, shared how business leaders can make sense of today's turbulent tech environment. Downs explains how you can define new standards for making technology decisions and take advantage of opportunities for growth and efficiency.

DEFINE SIMPLE AI USE CASES

"AI and security are top of mind for everyone making technology decisions," says Downs. Many clients seek his advice on leveraging AI to boost team efficiency, especially given the current skills shortage in IT, including expertise in cybersecurity and AI.

"Most companies struggle to find a successful use case for AI," he adds, noting the high failure rate of many AI initiatives. Investing in these endeavors only to fail to realize your return on investment is too risky for any organization. Challenges in effective data security and cybersecurity further raise the stakes.

The best approach with AI projects is to start with a practical, achievable use case that provides real value. This focused approach provides insights that can scale across the organization and build a strong foundation for AI expansion. It also helps secure returns without overextending resources.

KNOW YOUR BUSINESS' DIFFERENTIATORS

When deciding where to invest technology dollars, Downs says, "Business leaders mistakenly think they are either more unique than they are or more common than they are."

He explains that leaders regard their company as unique, causing them to overlook more broadly available capabilities in the marketplace. "Instead, they buy solutions from various vendors and cobble them together. This approach works when you have a smart, savvy team that knows how to close the gaps in your IT environment, but there are few organizations that can afford the resources to spend on tool integration."

Conversely, many business leaders consider their company to be more common than it is. "They buy a platform that will solve most of what they need without classifying how the solution best aligns with the business," notes Downs.

What qualifies your organization as unique is how you use your technology stack to differentiate your business. "This includes how you use it to protect, secure and recover your business when an outage occurs," says Downs. "Keep your business priorities and competitive differentiators in mind when deciding which technology to invest in."

FACTOR IN YOUR CORE BUSINESS AND DATA NEEDS

Failing to consider business and data needs can lead to poor technology decisions, running the risk of critical outages or security breaches that can harm your reputation, finances and operations.

"The other side of this challenge is failing to align your AI initiatives with the core needs of your business and data," Downs says. "Without designing flexibility into your approach, you

run a significant risk of missing out on valuable opportunities to respond effectively to market shifts and internal demands."

IT departments often receive funding only after other business priorities are met and strategies are defined, which makes it essential for IT leaders to proactively embed flexibility and efficiency into their design.

GAIN INSIGHTS FROM INTERNAL, EXTERNAL RELATIONSHIPS

Strong relationships are key to making effective technology decisions. Downs says, "Focus on your external relationships with peer organizations, business partners, vendors and analysts. They help you gain a broader perspective and share lessons learned before you discover them yourself the hard way."

He also recommends looking to your internal business units and IT team. IT leaders who successfully manage this way look to improve their team and make it more effective. By making their environment more agile, reliable, scalable, resilient and secure, organizations get greater value for technology investments. "If you don't adopt this method, your IT team can end up following the same routine, further increasing your organization's technical debt," he adds.

KEEP YOUR EYES ON THE ROAD MAP

Making smarter technology investments requires looking at your organization holistically and creating and following a road map of where you want your business to go. Downs suggests organizations take an iterative approach toward achieving their business goals, adopting the technology to support it effectively and ultimately modernizing your environment. He says, "By doing so, you enable your team to respond flexibly to business needs." ■



16 Ways to Streamline Your Technology Decisions

Making decisions about technology investments doesn't have to be daunting. Follow our checklist to better understand your business and make smarter technology decisions to modernize your organization.



AI AND SECURITY

- Work with business units to determine a simple, viable use case and what you need to enable it.
- Determine the infrastructure—network, compute, storage, cloud capabilities, automation and observability—you need to ensure your project's success.
- Account for how you'll classify your data and ensure its privacy and security.
- Factor in robust storage, data resilience and cyber resilience platforms so you can quickly detect, remediate and recover when a security breach occurs.



BUSINESS DIFFERENTIATORS

- Gain a clear understanding of what differentiates your business from other companies.

- Know what's in your technology stack and how you use it to stand out from your competition.
- Align your technology decisions with your business priorities and competitive differentiators.
- Define and consistently refer to a set of principles based on flexibility, resilience and security.



CORE BUSINESS AND DATA NEEDS

- Understand and prioritize the critical technical components, applications and data you need to run your business and maintain its reputation.
- Determine whether your current application portfolio supports the needs of your business and make plans for change as needed.
- Request technology to improve efficiency and create opportunities for innovation.



INTERNAL AND EXTERNAL RELATIONSHIPS

- Connect with peers, business partners, vendors and analysts to gain greater perspective and learn what to avoid.
- Speak with your business units and IT team to gain insights based on the experiences they face in their departments.
- Mentor and develop your IT team to lead, think and be creative so they can tune into what's happening in your organization.



ROAD MAP

- Create and share a vision of where you want the business to go.
- Refer to your road map for direction on where to invest iteratively in technology.
- As part of the risk equation, factor in your ability to adapt quickly when the business changes direction. ■

Company and Product Listings

SOLUTIONS DIRECTORY

2025



SOLUTIONS DIRECTORY 2025 PRODUCT LAUNCH

By accelerating innovation and embracing digital transformation, IBM Power clients can unlock greater efficiency, stay ahead of their competition and deliver exceptional value to their customers. The following partners and ISVs are introducing exciting new offerings, fueling the dynamic IBM Power partner ecosystem. Take this opportunity to explore these groundbreaking solutions and see how they can enhance your business.

New Products, Tools and Services Keep Customers Up to Date and the IBM Power Ecosystem Thriving

Business Intelligence/Analytics

Embedded Business Intelligence from LANSA

Turn data into action with LANSA's business intelligence solutions. Uncover trends and opportunities through user-friendly, AI-powered tools that aid all types of users in generating insights. Create dynamic dashboards and reports for collaborative data exploration, empowering smart choices at the point of decision-making.

[Learn more about LANSA on page 15 →](#)

AI

Profound AI from Profound Logic

Unlock the transformative power of artificial intelligence (AI) for your business with Profound Logic's cutting-edge AI solutions. Our comprehensive suite of AI-powered tools seamlessly integrates advanced technologies like machine learning and natural language processing into your existing systems, including IBM i applications, revolutionizing your operations and decision-making processes.

From conversational interactive agents to real-time data analytics that uncover hidden opportunities, our AI tools don't just enhance your business—they reimagine it.

[Learn more about Profound Logic on page 23 →](#)

PRODUCTS



CloudFirst provides guaranteed availability cloud hosting for IBM Power. Between white glove cloud migration services, automated backup and recovery and in-depth cybersecurity, businesses that choose CloudFirst gain peace of mind knowing their mission-critical applications and data are safe, secure and always available. Our cloud solutions enable IT modernization and AI adoption for organizations looking for an advantage in a competitive market.

• cloudfirst.host • info@cloudfirst.host • 631-608-1200

Cloud and Hybrid Cloud

ezHost

CloudFirst provides hosted systems built with easily scalable enterprise-level resources deployed in isolated environments with strict security controls.

ezRecovery

ezRecovery combines backup, managed standby, compute, storage and network infrastructure resources for quick and easy restoration of your vaulted data.

ezVault

An easily managed cloud backup solution, ezVault provides built-in multiple site redundancy and client controlled encryption, job scheduling, retention and retrieval.

Cybersecurity

ezAutomate

CloudFirst has been providing efficient and reliable cloud hosting, business continuity and IT management solutions since 2001. Our data centers and superior infrastructure designs offer true end-to-end redundancy. Coupling that with our highly trained, dependable staff assures the highest customer confidence.



CM First builds the most reliable, rapid and cost-effective software tools to optimize and transform enterprise applications. CM First products and services empower developers of IBM mainframe and midrange applications to advance their legacy code in the new digital economy, focusing on custom applications written in COBOL, RPG, Java, CA 2E (Synon), CA Plex, LANSAs, as well as other languages. CM First has served the IBM i and IBM Z communities since 1999 and is headquartered in Austin, Texas, with additional offices in Europe.

- cmfirstgroup.com • info@cmfirstgroup.com • 888-866-6179

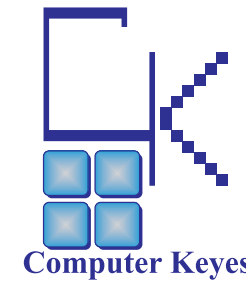
Application Modernization

CM evolveIT metaTX-AI for IBM i

CM evolveIT metaTX-AI is an innovative enterprise code analysis workbench for IBM Power developers and systems integrators. CM evolveIT metaTX-AI reduces analysis costs by up to 80% by employing modern artificial intelligence tools, advanced code slicing technology and best-of-breed code visualizations and analytics and adds powerful transformative capabilities with tools that automate the conversion of legacy code to Java.

Managed Application Services

CM First's Managed Application Services (MAS) help organizations manage, enhance and maintain custom applications in COBOL, RPG, CA 2E (Synon) and CA Plex. CM First provides MAS for the full lifecycle—we are an extension of your dev team.



Computer Keys is a leader in document distribution software for IBM i. kLink allows your employees and customers to securely transfer and access IBM i documents from any mobile device or browser. KeyesOverlay rapidly converts standard SCS printer files into eye-catching PDF documents in full color. KeyesOverlay can also be used to create interactive forms. KeyesArchive will archive spool files into your IFS and optionally index the individual documents or reports within the spool files. KeyesMail and KeyesFax are powerful multifunctional email and fax systems. KeyesPDF converts spool files into images or PDF documents. Computer Keys has been developing software solutions since 1978.

- ckeys.com • sales@ckeys.com • 425-776-6443

Office Automation and Office Support

KeyesFax

KeyesFax is a full function automated IBM i fax system. Spooled files are burst by fax number and auto transmitted with overlays. It combines both a send and receive facsimile processing system with a complete image package. The fax software will edit, send, receive, display, print and track fax documents or images using any standard IBM i without additional expensive hardware, software or subscriptions.

KeyesMail

KeyesMail is a powerful multifunctional email system for IBM i. Burst spool files into PDF, RTF or TIF attachments with overlays. The system contains a full set of APIs and monitors an output queue making auto responses, auto forwards or report distribution quick and easy. Email can be accessed from any browser or terminal. The green-screen editor can view Microsoft Word attachments. KeyesMail connects to any mail server.

KeyesOverlay

KeyesOverlay rapidly converts spool files into eye-catching full-color PDF documents. Create graphical overlays in full color (or black and white) then easily map your spool file text with different fonts, sizes and colors. KeyesOverlay can also create interactive forms for your customers to fill out and email or submit back to you.

KeyesPDF

KeyesPDF converts a spool file into an image. The resulting image can be used for any desired purpose, such as emailing or posting to a website. Spool files can be standard SCS printer files, AFPDS spool files or USERASCII spool files with HP-PCL code. The spool files will be converted into TIFF images, PDF documents or ASCII text and placed either in a physical file, into your IFS or onto a network drive. The resulting file can then be emailed, transferred or copied to another destination as desired.



DRV Technologies Inc. is a software development company creating innovative solutions to help customers get more from their IBM i systems.

DRV's family of FlexTools software solutions streamlines resources, improves efficiency and enables proactive system management. These solutions include paperless reporting and electronic forms with emailing and archiving, secure check printing and IBM i system monitoring.

- drvtech.com • info@drvtech.com • 866-378-3366

Office Automation and Office Support

FormFlex

FormFlex native IBM i software replaces preprinted forms and checks with clean electronic forms that print, PDF, email and archive. FormFlex requires no programming or PC servers. Other features include:

- Print forms to laser printers on plain paper
- Track, search and view what was sent
- Integrated PDF, email and archiving
- Add SecureChex to print MICR laser checks

FormFlex replaces obsolete, unsupported legacy tools and is available at a flat price for unlimited users.

SpoolFlex

SpoolFlex native IBM i software delivers an automated solution that quickly provides reliable, traceable, paperless report distribution in the formats users need. Features include:

- Convert spooled files to PDF, Excel and more
- Fully automated report delivery
- Integrated emailing and archiving
- Track, search and view what was sent

SpoolFlex requires no programming or PC servers and is flat priced for unlimited users.

Systems Management

MessageFlex

IBM i system messages can tell you how the system is performing, provided someone is logging on and reviewing those messages. But in today's environment, with remote workers and staffing challenges everywhere, maintaining personnel to monitor a console is a commodity many companies simply don't have.

DRV's MessageFlex software monitors IBM i message queues for system and program messages—proactively sending notifications by email, text message or forwarding messages without human intervention.



HarrisData is a family-owned and -operated business that has succeeded for over 50 years through a commitment to excellence and a determination to serve customers well. Developing enterprise application software solutions for mid-sized businesses, HarrisData offers ERP, HRIS, CRM and financial management. Implementation strategy focuses on getting live quickly; development focuses on features that deliver value, with the license designed around our customers. Our software delivers the basic tools that help you grow your business.

- harrisdata.com • sales@harrisdata.com • 262-784-9099

Business Management

AppsInHD HRIS

AppsInHD HRIS provides a hands-off HR/payroll solution. The interactive aspect eliminates the complexity of processes with pervasive automation using upfront rules configuration. You can plan ahead, set calendars and feed the pay transactions—plus, AppsInHD HRIS runs payroll. Paycheck recalculation on-demand eliminates the need to do complete payroll reruns, and alerts allow for better business management. The UI allows enterprise users to organize work, eliminate busywork and get jobs done quickly and efficiently.

HarrisData ERP

HarrisData's ERP is an expert integrated system designed exclusively for IBM Power systems. A comprehensive set of integrated applications manages the flow of information throughout the enterprise, including manufacturing, distribution, accounting, CRM, purchasing, human resources, payroll and employee self-service. Flexibility enables companies to respond quickly to customer demands, control costs and reduce time to market. Enabling improved processes and tools such as lean manufacturing and Kanban boosts productivity and profits while reducing waste for companies.

HarrisData Financials

HarrisData's state-of-the-art financial application utilizes the latest browser-based, drill-down functionality, simplifying preparation, analysis and interpretation of financial statements. Access to information such as source data is readily available for any transaction at any time. Accounts Payable provides the tools to control cash expenditures, improve cash management, provide comprehensive vendor management and reduce effort. Accounts Receivable manages the task of recording sales and collecting cash, including invoice entry, aging, collections, cash posting and customer management.



imPower Technologies helps companies hire and train the next generation of IBM i developers. We provide online, self-paced, instructor-led IBM i training for new and seasoned developers. Our courses enable new developers with little to no IBM i experience to become highly competent and seasoned developers to learn new tools for modernization. Courses include videos, sample programs, graded quizzes, weekly meetings and the use of an IBM i partition.

• impowertechnologies.com • 262-455-0408

Education

Online Course: IBM i Concepts and Operations

This comprehensive course is designed for entry-level and other platform developers to learn the IBM i. Upon completion, students will be proficient in using the IBM i operating system, Db2 database and IBM's new development tools. The course includes a mixture of videos, graded quizzes and labs, and weekly online meetings to ensure optimal retention and understanding of the course material. Class duration varies and is based on student activity—maximum of eight weeks.

Online Course: Programming in ILE RPG

Train new and current developers on the ILE RPG language in less than 10 weeks. Students will learn the latest RPG techniques, with each section covering two chapters of Jim Buck's* "Programming in ILE RPG" 5th edition textbook. The course is a combination of lectures, graded quizzes, programming examples and programming assignments. Students are invited to attend live Webex meetups once a week to ask questions during the course.

Workshops: RDi and Modular Programming and SQL

imPower offers workshops for developers to expand their knowledge and skill: RDi and Modular Programming and SQL Queries. These workshops are self-paced with labs, quizzes and video instruction. Taught by Jim Buck,* the 18-hour RDi workshop teaches developers RDi and new techniques and procedures that are essential for modernization. SQL Queries, taught by Birgitta Hauser, teaches developers SQL SELECT statements and more. Other workshops coming soon.

* Jim Buck is CEO, co-founder and lead instructor at imPower Technologies. He is an IBM Champion for many years and has been teaching IBM i technologies for more than 20 years.



Want to upgrade your legacy applications but concerned about disruption, costs or developer shortage? Modernize confidently with LANSA. Extend IBM i investments, speed up modernization and build tailor-made solutions for all platforms using professional low code. Trusted by brands like Visa, Disney and McDonald's, LANSA brings decades of experience in driving digital transformation for smoother user experiences and business success.

• lansa.com • sales@lansa.com • info@lansa.com

Application Development

Professional Low-Code Development

Build advanced and integrated applications faster using LANSA's professional low-code platform. Boost your productivity by leveraging a user-friendly language for limitless, full-stack development. Take advantage of reusable components for rapid deployment across web, mobile and desktop.

Application Modernization

IBM i Application Modernization

Why migrate when you can modernize more efficiently? Retain vital business logic while elevating user experience and overall usability by web-enabling your legacy applications. Elevate design and functionalities with minimal coding—no RPG skills needed.

Business Intelligence/Analytics

NEW! Embedded Business Intelligence

Turn data into action with LANSA's business intelligence solutions. Uncover trends and opportunities through user-friendly, AI-powered tools that aid all types of users in generating insights. Create dynamic dashboards and reports for collaborative data exploration, empowering smart choices at the point of decision-making.

EDI

Business Process Integration

Optimize operations with LANSA's integration prowess. Seamlessly connect disparate systems, synchronize data in real-time and automate business processes. Prevent costly human errors and initiate digital transformation to deliver better user and customer experiences.



Lightedge is a premier provider of data center and hybrid infrastructure solutions, offering comprehensive products and services and data center expertise across on-premises, colocation, private cloud and public cloud environments. With a client-first approach, Lightedge delivers secure, scalable and reliable IT infrastructure tailored to meet the complex needs of enterprises across a range of industries.

• lightedge.com • marketing@lightedge.com • 877-771-3343

Cloud and Hybrid Cloud

Lightedge IBM Cloud

Our IBM i and AIX managed services allow you to continue leveraging the power and performance of your IBM Power systems with solutions and services that extend your in-house capabilities to ensure reliability, security and compliance.

IBM on-net with Public Cloud

Add modern capabilities to your IBM Power systems running IBM i and AIX workloads with high availability deployments, improved disaster recovery, advanced user experiences and sophisticated data analytics powered by AWS.



M81 is a software house (ISV) specializing in IBM i. We already have 600+ end customers in 23 countries (Europe and Americas) running 1,000+ LPARs.

We provide two easy-to-use solutions, which are sold by 40 partners worldwide:

- Flash for i allows backups without disrupting production, multiple daily instant recovery copies and test environments created/refreshed instantly.
- Control for i provides full integration of the IBM i into your existing monitoring tool by adding more than 180 plug-and-play controls.

• m81.eu • contact@m81.eu • 470-826-1311

Systems Management

Flash for i

Gain agility on your IBM i, thanks to instant copies (FlashCopies/SnapShots).

No more impact on IBM i production to:

- Perform backups (including Save 21).
- Trigger daily recovery copies (including SafeGuarded copies) to recover your data after loss or corruption due to human error, malware or disaster.
- Generate/refresh new environments in 15 minutes, for analytics, tests, acceptance, preprod, anonymization and more usages.

Tools and Utilities

Control for i

Be more proactive: get alerts before problems become critical. Integrate the IBM i into your existing monitoring tool by adding more than 180 plug-and-play controls.

Benefits include:

- Everything monitored with a high level of accuracy and responsiveness using only one supervision tool (e.g., Nagios, PRTG, SolarWinds, Zabbix, Pandora, etc.).
- New IBM i controls added in less than 10 minutes without any development.
- Fully accepted by your monitoring administrator.



Maxava is a worldwide provider of innovative monitoring, high availability and disaster recovery, and security solutions. Maxava’s software and services are available from a global network of partners and are integral to the cloud offerings of leading managed service providers and cloud service providers. Maxava is an IBM Business Partner, and Maxava software is available via SaaS, cloud (DRaaS–Disaster Recovery as a Service and MaaS–Monitoring as a Service), subscription and on-premises software licensing models. Maxava serves more than 2,000 installations in over 40 countries, providing 24-7-365 support directly through regional offices in North America, Europe and Asia Pacific.

- maxava.com
- info@maxava.com • 215-713-5930

HA/DR/Backup

Maxava HA Enterprise+

Maxava HA Enterprise+ provides scalable, cost-effective IBM i real-time replication. Suitable for on-premises, colocation and cloud environments, as well as migrations to new hardware.

Features include:

- Simulated Role Swap enables users to test their disaster recovery plan without downtime
- Multiple Node Role Swap enables any of a multiple-node environment to become primary source when a Role Swap is invoked
- Multi-threaded IFS dynamically replicates up to 255 parallel processes to enable faster processing of IFS data
- Command Scripting Function enables pre-enabled commands to be defined and run to reduce failover and role-swap times

Security

Maxava Security Maxular

Protect your mission-critical IBM i data from ever-increasing threats with Maxava Security Maxular, a comprehensive solution that adds an invaluable layer of defense, paired with the ability to recover vital information whenever needed.

To guard against unauthorized access and malicious attacks, features include:

- Granular rules designed to protect critical data
- Point-in-time recovery
- Archiving to IBM i and non-IBM i, local, remote and cloud storage supported
- Exception alerting

Systems Management

Maxava Monitor Mi8

With Mi8 cloud-based architecture, you can monitor local and remote systems for potential issues. Monitored alerts are delivered to your chosen expert and your platform of choice, allowing for immediate remedial action. This solution supports in-house, remote management, co-location and MSP monitoring.

Features include:

- Comprehensive monitoring for applications residing on IBM i, AIX, Linux and Windows plus operating system, hardware, high availability and performance capabilities
- Filter, group and display technology, allowing you to choose who sees what, including business entity, location, systems type, operational area, platform and more



Meridian IT is a leading IT solutions provider with more than 40 years of experience helping medium and enterprise businesses with their IBM i and AIX on IBM Power needs.

Offering best-in-class cloud, on-premises and hybrid solutions, Meridian IT works with each client to execute a customized plan to support their business requirements and solve their IT obstacles.

- meridianitinc.com • 888-684-3644

Cloud

mPower Cloud Migration Factory

Meridian’s mPower Cloud Migration Factory is a comprehensive solution that helps businesses of all sizes migrate their workloads to the cloud quickly, securely and cost-effectively. Our proven methodology minimizes downtime and disruption to your business and ensures the successful migration of workloads to the cloud.

Data Management

Backup as a Service

Meridian’s Backup as a Service (BaaS) is a private or public cloud solution that provides businesses with the infrastructure they need to run their mission-critical applications. BaaS is built on best-of-breed technology and hosted in world-class data centers, so you can be confident that your data is secure and your applications are always up and running. You get a fully managed solution that provides scalability, performance and security.

Managed Service Providers

Enterprise Managed Services

Meridian IT’s Enterprise Managed Services (EMS) is designed for our client’s intricate needs. EMS provides comprehensive managed services that encompass at least one entire vertical of a customer’s IT support, whether it’s for an entire organization or a specific business unit. Our offering focuses on four areas: infrastructure, application, cloud and end-user helpdesk services. We offer tailored, expert support ensuring the seamless operation of your IT functions, enabling you to focus on your business objectives.



IBM i shops large and small trust software and services from MDNA to evolve their IT strategies while enhancing productivity. With Midrange Dynamics integrated solutions, meet your DevOps, application modernization and CI/CD goals on schedule and on budget. Whether you're just getting started or lack software updates, responsive support and reasonable fees from your current vendor, we can help. Our team's decades of experience will make it easier for you to build great applications.

- md-na.com • info@md-na.com • 877-290-6714

APIs

MDRest4i

MDRest4i enables IBM i programmers to build REST APIs and consumers. Quickly build any kind of integration with your IBM i using MDRest4i's ILE Development Framework for RPG and COBOL programs, a software development kit that generates programs for you and an API documentation portal.

Application Testing

MDTest

MDTest offers powerful unit testing in RDi or VS Code. You can drive more than 30 unit-test functions from within the MDChange tool suite. Automated unit testing is executed repeatedly and frequently to identify and resolve defects throughout the software development lifecycle.

Data Management

MDRapid

MDRapid substantially reduces business application downtime and risk as you deploy IBM i database changes across your enterprise. Business applications can continue to access databases as usual while data transformation is taking place. Move the new files into production with only minutes of downtime.

DevOps

MDChange

MDChange unites IBM i and enterprise development so projects move smoothly to production. Track software changes throughout the build cycle and support DevOps and CI/CD pipelines. Source can reside in source files, IFS or a Git/SVN repository. Deploy programs in one package to IFS or other servers, with flexible rollback.



With a legacy spanning more than four decades, ProData stands as a prominent industry leader in the development of IBM i utilities. As a trailblazer in utility development, ProData's flagship product, DBU, has gained global recognition with over 20,000 licenses sold worldwide.

- dodbu.com • sales@prodatacomputer.com • 800-228-6318

Application Development

DBU

DBU allows users to view and access all data on all systems using one interface. Instantly access information on logicals, enable security and audit logs or view and update multiple files. Access your data via green screen, Rational Developer for IBM i or web interface. DBU supports access to IBM i, MySQL, Oracle and other databases. Use DBU to analyze, access and secure data on all your servers and track any modifications made.

RDB Connect

RDB Connect empowers you to access data from multiple sources effortlessly, whether it's databases, FTP file servers, APIs, spreadsheets, cloud services or legacy systems. Developers will have robust APIs for integration and customization, rock-solid data security and lightning-fast transfers to help boost productivity across your organization. Whether you are in finance, healthcare or logistics, RDB Connect can adapt to any industry with a low-cost solution.

SQL/Pro

SQL/Pro provides the total package for all your in-house SQL software requirements. SQL/Pro users will benefit from improved interactive performance, SQL history, additional SQL statement prompting and multi-language support. Statements can be executed in batch or by interactively allowing output directed to a display, printer file or database file. Use SQL/Pro in conjunction with SQL/Audit to capture information about who executed the SQL, when it was done, what library/file it was run against and other pertinent information. Users can report all this information and use it to tailor their SQL statements and/or report these modifications as required by internal audits or compliance regulations.

LEVEL UP YOUR IT SKILLS

with

TECHCHANNEL WEBINARS!

EDUCATIONAL

TIMELY

RELEVANT

TRUSTED

INTERESTING

USEFUL

INFORMATIVE

VALUABLE

RELIABLE

TECHNICAL

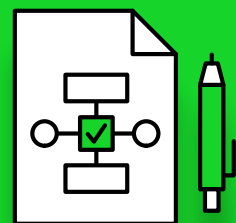
QUALITY

CURRENT

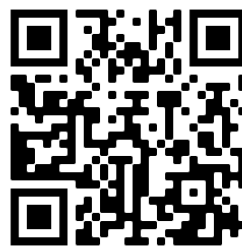
Join the nearly 100% of IT professionals* who find our webinars essential for staying current and solving industry challenges!

- Led by Industry Experts
- Live or On-Demand Access
- Subscribe for Exclusive Invitations

*TechBeat and Webinar surveys, August and September 2024



SUBSCRIBE NOW



TechChannel.com/subscribe

TechChannel 
Webinars

techchannel.com/webinar

PRODUCTS

SPONSORED CONTENT

TechChannel



Profound Logic takes you beyond modernization and into AI-enhanced futurization, empowering you to transition into the demands of tomorrow. For over 25 years, we've helped IBM i IT teams incrementally innovate and embrace the future with industry-leading solutions for natural language AI assistance, system transformation, API creation/management, application development and more. The future is flexible and built-in coexistence is standard with Profound Logic.

- profoundlogic.com • futurization@profoundlogic.com • 877-224-7768

AI

NEW! Artificial Intelligence

Unlock the transformative power of AI for your business with Profound Logic's cutting-edge AI solutions. Our comprehensive suite of AI-powered tools seamlessly integrates advanced technologies like machine learning and natural language processing into your existing systems, including IBM i applications, revolutionizing your operations and decision-making processes.

From conversational interactive agents to real-time data analytics that uncover hidden opportunities, our AI tools don't just enhance your business—they reimagine it.

Integration

Shatter data silos and forge a seamlessly connected ecosystem with our game-changing integration solutions. Profound Logic's robust toolkit empowers your IBM i applications to communicate effortlessly with cutting-edge technologies, cloud services and third-party systems, creating a symphony of data flow across your entire organization. Whether you're implementing APIs, embracing microservices architecture or enabling real-time data synchronization, our integration prowess provides the flexibility and scalability to meet your most ambitious goals.

With Profound Logic's integration expertise, you're not just connecting systems—you're orchestrating a digital transformation.

Application Modernization

Code Transformation

Profound Logic's Transformation Services propel your legacy IBM i applications beyond mere modernization into true futurization. Our innovative approach seamlessly blends automated code conversion, flexible UI futurization and expert guidance to transform your RPG and COBOL applications into cutting-edge, open-source solutions. With our phased implementation and unmatched coexistence technology, you can transform at your own pace while eliminating business disruption. Experience increased agility, improved user experiences and enhanced integration capabilities, all while preserving your critical business logic.

{p}rogrammers.io

Programmers.io is a fast-growing, ISO27001 certified technology company. With 1,000+ dedicated professionals, we offer a comprehensive suite of development solutions for businesses including full-stack, IBM i, cloud engineering, shift left testing, DevOps, application modernization and AI/ML. They offer an industry-unique happiness guarantee and 24-7 support.

- [programmers.io](https://www.programmers.io) • info@programmers.io • 800-600-5822

Application Development

IBM i Application Development

Programmers.io developers are IBM i Power experts with experience in RPG/400, COBOL/400, J2EE, WebSphere, Profound and LANSA.

- RPG, Synon, COBOL and Java developers
- EDI apps, ERP and WMS expertise
- Web services applications
- Web APIs with IBM web service
- Systems administration and support
- Performance boosts on IBM i applications
- Modernization, migration and AI enablement

IBM i Staff Augmentation

Programmers.io developers expand your team's capabilities on demand and take charge of your project. Our average IBM i professional has seven-12 years of experience.

- Transparency
- Flexible scalability
- Access to global talent
- Savings on hiring and training costs
- A happiness guarantee (if you aren't happy, you don't pay)

COBOL

COBOL

Programmers.io has a pool of talent with expertise in all legacy languages on IBM Z including COBOL and CICS being among the top ones.

- Application development and Maintenance
- Modernization and Migration
- Microfocus COBOL
- Fujitsu NetCOBOL
- IBM AIX COBOL
- OpenVMS COBOL

DevOps

DevOps Transformation

DevOps allows organizations to develop and combine teams to automate IT processes. When implemented correctly, DevOps can deliver better business capabilities and reduce costs.

- GitHub, Atlassian, AWS and Azure
- Process automation services
- CI/CD development services
- Containerization and Kubernetes
- Infrastructure automation and management
- Agile process customization and implementation
- SRE, infrastructure and environment engineering
- Infrastructure as code and deployment automation
- Specialized DevOps services

EDI

EDI

Programmers.io helps clients maintain and support day-to-day EDI applications. They streamline existing processes and support various in-house and third-party (like TLI, Cleo, Delta Liaison, Extol, Sterling Integrator, etc.) EDI tools covering multiple domains (like Retail, Transportation, WMS, etc.) integrated with various ERP and TMS (like PRMS, JDE, LTL400, Infor, etc.).

- Onboarding new trading partners
- Setting up the network/communication channel
- Writing inbound/outbound EDI processes
- Mapping of ANSI X12 and EDIFACT EDI Documents

Modernization

iA-Impact Analysis Product

Reduce your IBM i analysis time by 80%. Our innovative iA Impact Analysis product will revolutionize how you maintain and understand your IBM i system.

- Source scan
- Pseudo code generation
- Where file field is used
- Where object is used
- List of objects
- Where Variable is used
- Where procedure is used
- Source location breakdown
- File field details
- Object context matrix
- Hierarchy structure diagram

IBM i Modernization

Programmers.io provides expert consulting and development services for modernizing IBM i RPG systems, such as CL, CLLE, RPG, RPG II, RPG III, RPGILE, free-form RPG and other legacy systems.

- Modernization consultation
- Application modernization and support
- UI modernization and enhancement
- Database modernization and upgradation
- RPG modernization
- AI assisted code analysis and conversion
- Cloud and external systems integration
- Green-screen automation



Racksquared Data Centers offers everything from colocation to fully managed IT solutions for Intel and IBM Power. We specialize in providing colocation, cloud backup, disaster recovery, IBM Power in the cloud and IBM i administration services. Our customers gain access to technical expertise, the latest technologies and a secure, reliable, resilient environment for their IT systems. We become an extension of your team, managing, monitoring and supporting your infrastructure, so your business is always up and running.

• racksquared.com • sales@racksquared.com • 855-380-7225

Cloud

IBM Power in the Cloud Solutions

Stop buying and depreciating hardware. Deploy Racksquared's IBM Power in the Cloud. This solution provides you with access to IBM Power10 infrastructure custom configured with the resources (processor, memory and storage) you need. In addition, our administrators perform the day-to-day management of hardware and operating systems, handle PTF installs, manage backups and conduct a host of other tasks. With servers located in a secure, reliable and resilient data center, we keep your business up and running.

Intel Cloud Solutions

Our expertise isn't limited to IBM Power. We can also host your Intel infrastructure in our cloud. Utilizing VMware and SAN storage, we can configure a system with the processor, memory and storage you need to run your applications. Along with the resiliency of this platform, we also provide backup of your production data at our secondary data center. Our cloud solutions are designed to keep your business up and running.

HA/DR/Backup

IBM Power Cloud Backup Solutions

Still using physical tape to back up your IBM Power system? Racksquared's IBM Power Cloud Backup solution provides you with a digital solution for backing up your data offsite. By leveraging a virtual tape library, you can reduce downtime for performing backups and in the event of a disaster, experience faster recovery time. With your data stored in a secure, reliable and resilient data center, you can focus on your core business.

IBM Power Disaster Recovery Solutions

Do you have a disaster recovery plan for your IBM Power system? Racksquared's IBM Power Disaster Recovery solutions are designed to give you peace of mind knowing that in a disaster situation you are prepared to recover. With reserved hardware, high availability and other solutions available, we can customize a solution that meets your recovery point and recovery time objectives. Add on annual testing and you can be confident that you are disaster ready.

Managed Service Providers

IBM Power Colocation Solutions

When it comes to your environment, are you doing the best you can with what you have? Racksquared's IBM Power Colocation solution provides companies with a secure, reliable and resilient environment for their Power server. Our data centers are designed with redundant power, internet and systems, so you can be confident you won't experience any downtime. Once collocated, we can take over backup and administration services so you can focus on your core business.

Services/Consulting

Managed IT Services

Your customers don't care about your IT infrastructure; however, most companies dedicate a significant amount of their IT resources to managing it. When you outsource the management of your IT systems, your team can focus on creating solutions that differentiate your business and deliver value for your customers. Let's talk about how Racksquared Data Centers can customize a fully managed IT solution to meet your business needs.

Systems Management

IBM Power Administration Services

The pool of available IBM Power experts is shrinking, while demand for this skill set remains strong. Racksquared's IBM Power administration services provide customers with access to a team of experienced admins for the day-to-day support, management and monitoring of your IBM Power environment. With your most critical business applications running on IBM Power, doesn't it make sense to have an expert managing it for you? Available for on-premises or cloud servers.



IBM i is different from other systems. Securing it requires expertise. Raz-Lee Security is one of the only IBM i security providers that concentrates on the IBM i. Raz-Lee delivers high-level security solutions, enabling organizations to comply with global regulations such as GDPR, PCI and SOX.

Raz-Lee's flagship iSecurity suite protects against insider and outside threats, preventing unauthorized access to business-critical information. Raz-Lee is committed to providing comprehensive IBM i compliance, auditing and security solutions.

- razlee.com • marketing@razlee.com • 888-729-5334

Business Intelligence/Analytics

iSecurity AP-Journal

By providing a timeline report of all changes relating to application data, iSecurity AP-Journal reduces unauthorized activity and enables users to meet regulatory requirements. iSecurity AP-Journal also issues real-time alerts to inform managers of any changes in application databases or unapproved access to critical data.

iSecurity Audit

iSecurity Audit enhances native IBM i auditing by monitoring and reporting on all activities in the IBM i environment. It employs real-time detection to identify security events as they occur and record details in a log file. iSecurity Audit offers the most powerful and flexible reporting features available today. It includes more than 80 ready-to-run queries and reports.

Database

iSecurity DB-Gate

iSecurity DB-Gate empowers IBM i customers with exciting data access capabilities, based on open database connectivity, employing standard IBM i facilities to enable fully database-transparent access to remote systems.

Security

iSecurity Anti-Ransomware

iSecurity Anti-Ransomware quickly detects high-volume cyber threats deployed from an external source, isolates the threat and prevents it from damaging valuable data.

iSecurity Antivirus

iSecurity Antivirus software cannot be disabled by any known virus, runs locally at the IBM i or can be executed on ICAP Client Mode releasing all the processing load to specific and trusted servers and gives to you the power to choose the antivirus database provider.

iSecurity Firewall

iSecurity Firewall is a comprehensive, all-inclusive intrusion prevention system that secures every type of internal and external access to the IBM i server. It enables you to easily detect remote network access and—most importantly—implement real-time alerts.

iSecurity Multifactor Authentication

iSecurity MFA works with every authenticator app available in the market. We use ANY Token generator, Radius, PingID, Okta and even Google Authenticator on a mobile phone or by any hardware device. Freedom is part of our multifactor authentication.

PRODUCTS



Remain Software is a leading provider of DevOps and application lifecycle management solutions with over 30 years of experience. We are committed to delivering best-in-class solutions and services that meet the unique needs of our customers. Our latest innovation is Octo, a new web-based platform that supports our flagship product, TD/OMS. Our global team of experts and partners provides service and support in multiple languages. We are constantly innovating and developing new solutions to meet the changing needs of our customers.

• remainsoftware.com • info@remainsoftware.com • 757-550-1560

Application Development

Remain API Studio

Remain API Studio is a powerful and intuitive development environment that makes it easy to create, build, manage and test REST APIs. With its rich and visual editor, easy import and export capabilities, and built-in documentation, you can be confident that your APIs will be efficient and compliant.

API Studio works seamlessly with TD/OMS, our DevOps platform, to manage and modernize applications. With TD/OMS, you can track changes to your APIs, manage their lifecycle and ensure all components are always current regardless of platform.

TD/OMS

TD/OMS is a flexible, cost-effective and easy-to-use DevOps tool that will help you mitigate these risks. It provides a real-time view of your application components, dependencies and configuration, so you can identify and address potential problems before they cause an outage or disruption. TD/OMS also boosts team collaboration, productivity and time savings, so you can get your software to users and customers faster and with fewer headaches.

Tools and Utilities

XREF

Remain Software's XREF DevOps tool will help you quickly and easily identify and troubleshoot problems caused by unknown dependencies.

TD/OMS, our flagship product, includes XREF as part of the standard Remain Software DevOps platform. With its intuitive interface and powerful search capabilities, XREF will help you improve your team's collaboration and productivity.



Tired of ALM, or SCM solutions that leave you stranded, and the only thing that gets upgraded is your yearly maintenance price?

Leave the stranded software. Embrace DevOps.
Embrace unstoppable growth.

Does Your ALM or SCM Solution Leave You Stranded?



Contact us today to make the SWITCH to DevOps!

Make the move to DevOps with Remain Software and their cutting-edge solutions.

They are your lifeline to seamless integration, continuous innovation, and streamlined processes.

Unleash your team's potential and drive business success with Remain Software.

Scan the QR Code to get our Change Management Best Practices Guide!



Remain Software Inc.
130 W. Plume Street Unit C,
Norfolk, VA 23510
United States
usa.office@remainsoftware.com
Tel: 757-550-1560

Remain Software HQ
Remain B.V. Dukatenburg
82b 3437 AE Nieuwegein,
The Netherlands
info@remainsoftware.com
Tel: +31 (0) 30-6005010



Rocket Software partners with enterprises of all industries to solve their most complex IT challenges across infrastructure, data and applications. Our solutions simplify—without disrupting—their modernization journey. Trusted by over 12,000 customers, Rocket enables seamless in-place modernization. With our tools, we preserve IBM i reliability and security while embracing the benefits of the cloud and the challenges our users face in an evolving era.

• rocketsoftware.com • 855-577-4323

Data Management

Rocket Data Intelligence

Utilize a self-service data intelligence platform built on automation that spans cloud, distributed and mainframe infrastructures. Our data intelligence software manages the complex environments of the world's largest organizations, regardless of how they are using their data.

DevOps

Rocket DevOps

Rocket DevOps (formerly Rocket Aldon) allows companies to implement CI/CD to IBM i environments, balancing the freedom of flexibility against the structure of automation throughout the development process. Extend holistic DevSecOps best practices to the IBM i, pursue innovative experimentation and leverage Kubernetes and other cloud-native technology. Plus, respond easily to compliance audits and adapt to ever-changing expectations via process, technology or experience.

Modernization

Rocket Continuous Modernization

Rocket's Continuous Modernization Kit (CM-Kit) is a comprehensive suite of tools that empowers you to plan, develop and execute your IBM i modernization strategy and achieve the highest return. The Rocket CM-Kit includes [Rocket Process Insights](#), [Rocket API](#) and [Rocket Modern Experience](#) and facilitates application modernization for IBM i without requiring expertise in COBOL or RPG. It simplifies cloud migration, streamlines integration across diverse environments, enhances productivity and empowers data-driven decision-making.



Real Vision Imaging (RVI) is an industry-leading paperless solution that enables you to digitize and index your most important documents, making them available for later retrieval, including secured access from the web or even a mobile device. RVI is a cross-industry solution available on three platforms: IBM Power running IBM i, Microsoft Windows and cloud. RVI provides the expertise to assist with requirements definition, implement your system, train your users and deliver superb help desk support following your install.

• realvisionsoftware.com • johnpaul@realvisionsoftware.com • 318-855-0283

Document Imaging

RVI Cloud

The RVI Cloud document imaging solution runs in a protected and reliable environment with a monthly/yearly rate based on your company's data usage. It offers the complete solution, which includes scanning, workflow, viewing, mobile applications and also capture and storage of PC documents, reports, files, photos and video. Your RVI imaging system also includes many levels of security to protect your data and images. As an extra security tracking measure, RVI offers auditing and tracking so you can always know the history of each document. Has AI enabled.

RVI for IBM i

RVI Complete for IBM i document imaging system is a powerful and robust solution that incorporates all of the advanced imaging and management functions to satisfy a variety of business needs. It's a solution for scanning, storage, retrieval of black-and-white documents and color images, spool files, overlays, email, fax, audio and video content. This product is easily integrated with your core business applications. It's user-friendly and scalable from a pilot program to an enterprise-wide content management solution. Has AI enabled.

RVI for Windows

RVI Complete for Windows is a powerful digital document management solution developed for the Microsoft Windows platform. It's a comprehensive digital archive system that incorporates advanced imaging functions to satisfy a variety of business needs. RVI Complete for Windows easily integrates with existing business applications and is user-friendly and scalable from a pilot project to an enterprise-wide solution.



Service Express is an industry-leading data center solutions provider specializing in managed services, hardware solutions, cloud hosting, multivendor maintenance and more. As a gold-level IBM Business Partner, Service Express helps IBM Power customers running IBM i and AIX maximize their return while ensuring critical data is available and secure. Customers worldwide trust Service Express to maximize infrastructure strategy, maintain systems and deliver flexible solutions for their data centers.

• serviceexpress.com • IBMSales@serviceexpress.com • 800-940-5585

Cloud

Cloud Hosting

Our cloud is built on IBM Power and IBM FlashSystem storage technology, delivering secure, scalable, resilient solutions to meet your specific requirements. With IaaS for IBM i and AIX, you can consolidate workloads onto fewer systems, increase server utilization, reduce capital and management costs, and virtualize memory, processor and I/O resources.

Hardware

IBM Power and Storage

Our team has the expertise to configure, install and implement your IBM Power servers, HMC, LPAR configurations and storage solutions. With years of experience and knowledge, we understand a wide range of IBM i applications to enhance usability and operability in your data center. Our consultative approach delivers customized hardware solutions that fit your business goals and long-term investments.

Managed Service Provider

Managed Services

With our managed infrastructure services, you can count on our IBM-certified administrators to work alongside your team to ensure you get the most from your IBM systems. Our proactive support delivers a hands-on approach to system health, security and compliance—keeping you one step ahead of downtime.

OS Upgrades

Our experienced system administrators know compatibility requirements, address risk and implement testing to ensure a successful upgrade. While OS upgrades can take weeks of preparation and planning to run smoothly, we make the process as easy as possible for you.

Why Your IBM i Environment Absolutely Needs Antivirus Protection

Debunking Old Myths and Addressing New Threats

As an IBM Business Partner, we're often engaged to provide advice to customers based on what we see coming down the pike.

The question I've been asked the most in the last year is easily: "Do my IBM i environments require antivirus protection?" Yes. Always.

Corporate rule-bending during the COVID-19 pandemic is partially to blame for heightened risk. Back then, people had to work from home. Quickly. Do you think everyone did it right with proper security, VPNs, etc.? No way. Many intentional holes were punched in firewalls for people to continue working remotely. Some of those holes have been closed off. Many haven't. Interfaces left open are being bombarded with attacks regularly. I still deal with the fallout of roughly 10-12 ransomware attacks every year.

IBM i is one of the most securable OSes in the world. It's also seldom secured properly because of the old rumor that the AS/400 can't be affected by a virus. Or that it's largely impenetrable. Back in the day when everything was connected with twin axial cable, yeah that holds water. Since the advent of TCP/IP, systems running IBM i are just another target. Interfaces are seldom protected by exit point

programs. Security audit logs are seldom turned on, and even when they are, they're often not collecting the right information. And to this day we still find systems with a minimum password length of one. Seriously. Private authority on objects is seldomly implemented correctly. Way too many people have *ALLOBJ special authority.

Ransomware affects IBM i through file shares by way of NetServer. Your risk increases when you have a guest user ID in NetServer. A guest ID provides complimentary access to whatever you have shared in NetServer. Even if you don't use a guest ID, anyone with an active drive mapping to their IBM i file server is subject to be a launching point for ransomware.

What directories you share also can increase your risk. If you share the root directory, the entire IBM i OS is at risk for destruction. If you're only sharing one or two critical directories, you must ensure they're being properly protected by way of authorization lists at IBM i 7.5, and proper private authority at the object level regardless of release.

Don't fall for the myths, protect your IBM i environments. ■



STEVE PITCHER

SALES CONSULTANT AND SECURITY ENGINEER

Steve Pitcher has spent his entire 23-year professional career on the IBM i platform and is a world-renowned security subject matter expert and public speaker. As a sales consultant and security engineer at Service Express, Pitcher strives to find elegant, cost-effective and practical solutions. He has been a perennial IBM Champion since 2011 and a longtime volunteer and past board member with the COMMON Americas User Group.



PRODUCTS



Established in 1982, Software Engineering of America (SEA) is a worldwide provider of IBM i optimization, cybersecurity and monitoring solutions. SEA's customers include nine of the Fortune 10 and over 90% of the Fortune 500.

SEA provides IBM i security and monitoring solutions including multifactor authentication, anti-ransomware, anti-virus, audit and compliance reporting, self-service password reset, encryption, exit point monitoring, system message and resource monitoring, and more.

• seasoft.com • info@seasoft.com • 516-328-7000

Security

iSecurity Multi Factor Authentication (MFA)

iSecurity Multi Factor Authentication (MFA) is a powerful solution that secures IBM i sign-ons.

iSecurity MFA requires users to verify their identities with two or more authorization methods before gaining access to IBM i servers and data, improving overall security and satisfying many governmental, regulatory and insurance requirements.

iSecurity MFA is a pure IBM i-based solution that runs directly on IBM i servers.

iSecurity Suite: End-to-End Security for IBM i

iSecurity is a comprehensive, user-friendly solution for security, auditing, compliance and reporting in the IBM i environment.

The iSecurity suite provides end-to-end security for IBM i systems including solutions for multi-factor authentication, anti-ransomware, anti-virus, audit and compliance reporting, self-service password reset, encryption, exit point monitoring and more.

iSecurity ensures effortless compliance with mandatory security regulations and auditor requirements, offering hundreds of pre-built security reports to meet today's regulatory and auditing standards.

Systems Management

absMessage: IBM i Message and Resource Monitoring

absMessage is a comprehensive IBM i message and resource monitoring solution that centralizes and automates resource monitoring across the IBM i environment. Responders are alerted in real time when events occur and automations can help to resolve events without hands-on involvement from IT. IBM i-specific ServiceNow tickets can also be generated from monitored events.

absMessage is accessible through multiple interfaces including Web UI, 5250 green screens as well as a Java-based GUI.

WE ARE COMMON

WHAT DOES A COMMON MEMBERSHIP INCLUDE?



Hundreds of hours of expert tech knowledge in our content library available on-demand, 24x7



Industry leading conference events to connect and engage with the global COMMON community



Boot camps on IFS, RPG, SQL, Security, IBM i fundamentals and more, with new added each year



Access to our growing global community, and a connection point for students and employers



FREE access to publications, webinars and online tech conferences



The opportunity to speak at our conferences and bring attention to what YOU consider important to the tech community

AND EVEN MORE!

LEARN MORE AT
COMMON.ORG





TL Ashford produces software to generate bar code labels and forms from IBM Power systems running IBM i.

Barcode400 is the No. 1 labeling solution for IBM i to generate barcode labels. Barcode400 is used in every industry by thousands of companies around the world. TLAForms is the premier solution to convert traditional IBM i spool files into full-color, professional forms.

Barcode400 and TLAForms are the most feature-rich, cost-effective software solutions available for IBM i, backed by exceptional tech support.

Download free trial software at tlashford.com.

- tlashford.com • johnp@tlashford.com • 800-541-4893

Tools and Utilities

Barcode400

Barcode400 provides a simple design tool to create labels. Add text, bar codes including 2-D bar codes, images and more while utilizing data directly from your IBM i files and applications. Labels can be printed to hundreds of thermal transfer printers as well as HP and compatible models. Labels can even be generated as PDF documents. Barcode400 has been integrated with nearly every ERP and WMS application software on IBM i, as well as thousands of in-house written applications. We also provide compliance labels at no additional charge for more than 500 companies in automotive, retail, healthcare and more.

TLA Forms

TLAForms allows you to use data from existing IBM i spool files to create professional forms with no programming. Create fields from IBM i spool file data. Place data on a form as text, bar codes or images. Use SQL to retrieve data from your IBM i files. Use actions to condition objects on the form to easily create a header page, detail page(s) and last page. Or use actions to condition output. For instance, email the form when an email is available. If an email is not available, print the form. The Form Design Interface makes designing forms easy and no programming is required to generate forms.

Expanding Horizons in Barcoding

Elevate consumer experiences with 2D barcodes

Barcodes have long been an essential tool in supply chain management, streamlining processes like shipping, inventory tracking and product authentication. However, the capabilities of barcodes are expanding, driven by the ability to encode more data in 2D bar code symbologies such as QR Codes and DataMatrix. These 2D bar codes have the potential to revolutionize not only operational efficiency but also the way businesses interact with their customers.

The upcoming GS1 Sunrise 2027 initiative is a prime example. By encouraging the adoption of 2D barcodes, GS1 aims to embed more detailed and actionable data onto labels.

Beyond just scanning for price or inventory data, these new barcodes can provide consumers with access to product origins, sustainability information and even personalized promotions. This transparency builds trust and strengthens customer relationships, fostering loyalty in increasingly competitive markets.

THE RIGHT BARCODING SOFTWARE

To fully capitalize on these opportunities, organizations need the right software. TL Ashford's TLAForms and Barcode400 software empower IBM i users to create, manage and print 2D barcodes with precision and compliance, ensuring they are ready to meet the GS1 standards and embrace broader possibilities.

Consider the retail experience: a customer scanning a 2D barcode could instantly access allergen details, recipes or manufacturing certifications. For businesses, this interaction transforms a static label into a dynamic touchpoint, creating new opportunities for engagement and data collection. Imagine the endless possibilities of how you could leverage this technology to connect with your customers.

As we approach 2027, the ability to deliver these enhanced experiences will become a competitive advantage. With the help of solutions like TLAForms and Barcode400, companies can not only meet industry standards but also lead the way in leveraging barcoding for deeper, more meaningful connections with their customers. This isn't just the future of labeling—it's the future of customer engagement. ■



MIKE SCHUETT

DIRECTOR OF MARKETING
MIKES@TLASHFORD.COM

Mike Schuett brings 30 years of expertise in automatic identification applications on IBM i. At TL Ashford, he has excelled in roles spanning technical support, sales and marketing, helping countless customers optimize forms and label productivity.



PRODUCTS



Xorux is an independent company that develops performance monitoring and reporting tools XorMon, LPAR2RRD and STOR2RRD.

LPAR2RRD is a performance monitoring and reporting tool for server virtualization on IBM Power including IBM i and other platforms as well.

STOR2RRD is a performance monitoring and reporting tool for storage systems, SAN and LAN switches.

XorMon combines both tools into a single pane of glass.

• xorux.com • info@xorux.com • 770-712-9887

Performance

LPAR2RRD

LPAR2RRD is a performance monitoring and reporting tool for IBM Power.

It's a great way to get information about PowerVM utilization from a single LPAR through a physical box to all resources managed by the HMC. All environments are supported: AIX, VIOS, Linux and IBM i.

STOR2RRD

STOR2RRD is a performance monitoring and reporting tool for storage systems, SAN and LAN.

If you need to know how your storage environment is utilized, response times or any other key metrics, use STOR2RRD. With this solution you can monitor almost any storage and see all storage systems in a single pane of glass.

XorMon

Infrastructure performance and capacity monitoring tool.

Gives you the ability to see the utilization of the IBM Power, storage systems, server, SAN, LAN, database, clouds, containers and more in one single panel of glass.

Optimize your mission-critical IT infrastructure with XorMon.

Resources

**SOLUTIONS
DIRECTORY**

20
25

Change is a constant in the IT world, making continuous learning and growth essential. Keeping pace with evolving technology can be tough, but local user groups make it easier by creating spaces where professionals can connect, learn and collaborate.

These groups offer a wide range of activities, from conferences and student events to virtual meetings and competitions. They help sustain the IBM i platform, foster innovation and strengthen the IBM Power community through shared knowledge and experiences.

Curious about what's happening near you? Explore these active regional user groups to discover events, opportunities and connections in your area!

Canada

Ontario (Toronto)—Toronto Users Group

tug.ca / admin@tug.ca

The Toronto Users group's purpose is to provide a professional forum for presentations and exchange the ideas that pertain to IBM Power computers as well as related subjects for users, from the technical management and end user perspectives. Meetings alternate between inperson (bimonthly) and Zoom sessions. Membership includes free event access.

Europe

COMMON Europe

comeur.org / office@commoneur.org

COMMON Europe connects IBM Power and IBM i professionals across the community. Join the annual Common Europe Congress (CEC) to network with experts, share knowledge, and explore the latest in technology. Participate in country-level iTour events or webinars to engage, learn and exchange best practices. Members of any COMMON Europe Country User Group gain automatic membership and access to these opportunities. Connect, learn and grow with COMMON Europe!

United States

California (Costa Mesa)—Orange County Educational Advancement Network (OCEAN)

ougsc.memberclicks.net / info@oceanusergroup.org

OCEAN, the largest IBM Power and IBM i user group in the Western U.S., is a nonprofit run by volunteers. It offers affordable, cutting-edge education for IT professionals through monthly meetings, webinars, and a renowned annual Technical Conference and Vendor Expo. Covering diverse topics like IBM i OS, cloud computing, analytics and IT management, OCEAN helps professionals build valuable skills. With 400+ members and connections to 1,000+ professionals, its mission is to foster learning and networking in Southern California's tech community. Join OCEAN to elevate your career and engage with industry leaders!

COMMON User Group

www.common.org / support@common.org / 800-777-6734

COMMON, the largest IT association for IBM technologies, has empowered professionals since 1960. It connects a vibrant community of users, partners and experts through leadership, advocacy, and education. Members enjoy access to a 24-7 content library, virtual learning, certifications and globally recognized conferences that offer tailored sessions and networking opportunities. With insightful publications and a platform for collaboration, COMMON keeps members informed and ahead in their careers.

IBM i Midwest User Group (iMWUG)

info.briteskies.com/midwestusergroup / iMWUG@briteskies.com / 216-369-3600

The IBM i Midwest User Group (iMWUG) is a dynamic new user group fostering education on all aspects of IBM i combined with ERP, with a mission to promote the use of this powerful platform and enrich the user experience. When you join iMWUG, you'll join a vibrant and inclusive community dedicated to educating and sharing knowledge about the IBM i platform. With free membership, you'll gain access to virtual bimonthly meeting and webinar sessions with industry experts, education on new technology and networking opportunities within a community of like-minded IBM i professionals.

LUG (Large User Group)

ibmilug.ihost.com / Director of Operations and COO: Lynne Benedict, lbenedict@the-lug.com / 507-533-8035

LUG (Large User Group) was formed in 1994, incorporated in Minnesota in 1999, and has been going strong ever since. LUG consists of nearly 90 large companies that have a significant investment in IBM i, with members using more than 225 million CPW. Recognized leaders in their industries, member companies are present in finance, manufacturing, insurance, retail, petroleum and media. At LUG meetings, there are dozens of presentations, breakout sessions and opportunities for dialogue. Each meeting includes in-depth, technical and strategic presentations on varied topics members are interested in, excluding marketing and sales. Working meetings are held three times per year at the IBM offices in Rochester, Minnesota, the birthplace of the IBM i.

Michigan (Grand Rapids)—West Michigan IBM i Users Group

msug.net / Chairperson: Chris Van Liere, 269-660-7777 ext. 7876 / chairperson@wmsug.net / Program Director: Leo Whitaker, Jr., 616-530-6600 / ProgramDirector@wmsug.net / Webmaster, Treasurer, Secretary: Scott A. Smith / administrator@wmsug.net

West Michigan IBM i User Group (WMSUG) is a nonprofit group offering IBM i education for CIOs, IT managers and developers. Meetings run monthly (September–May), covering timely topics for business success with the platform.

Michigan IBM i Power Systems Technical Education Conference (MITEC)

gomitec.com / info@consultechservicesinc.com / 248-628-6800

The Michigan IBM i Power Systems Technical Education Conference (MITEC) 2025 invites you to elevate your tech expertise on June 2, 2025. Held at the VisTaTech Center, Schoolcraft College in Livonia, Michigan, this power-packed day features 40+ sessions led by industry experts, unrivaled networking opportunities and world-class presenters. Customize your schedule with a range of topics to maximize your learning, all at an affordable cost to keep your company ahead in technology. Don't miss this chance to grow your knowledge and connections—mark your calendar now!

Michigan (Rochester)—Southeast Michigan iSeries Users Group

semiug.org / info@consultechservicesinc.com

The Southeast Michigan IBM i User Group's mission is to provide a forum for IBM i users to gain new skills, stay informed about upcoming changes on the platform and network with other IBM i professionals. Meetings take place monthly September through June (excluding December). Many of the speakers at the user group's meetings are current or former IBM i experts who have a vast wealth of knowledge to share with the attendees.

Mid-Atlantic Group of IBM i Collaborators

magic-ug.org / admin@magic-ug.org

The Mid-Atlantic Group of IBM i Collaborators (MAGiC) was founded to provide a place to collaborate and to learn new IBM i skills from industry experts and share ideas with other members. MAGiC provides informative monthly online sessions, an annual two-day workshop focused on open source and an annual conference. MAGiC has become a great resource for IBM i professionals to gain valuable insights and training from knowledgeable industry experts, designed to help us shift our thinking and approaches from reactive to proactive, from status quo to visionary, from keeping up with the industry to leading from within it.

Minnesota (St. Paul)—QUSER

quser.org / QUSER, P.O. Box 40062, Saint Paul, MN 55104

QUSER connects IBM i users through networking, idea-sharing and expert-led knowledge sessions. Becoming a member allows for access to additional support provided by IBM, COMMON and other corporate sponsors, all of which are committed to the success of QUSER Group. These sponsors provide special guest speakers, contributing to education funding and provide discounts to attend the popular conferences.

New York (Syosset) – Long Island Systems Users Group (LISUG)

lisug.org / President: Chris Gomez, chris.gomez@pcrichard.com / Vice President: Steve Wolk, swolk@pcrichard.com

The Long Island System User Group (LISUG), established in 1984, is a thriving community for all computer users, continually advancing learning, networking and innovation. Originally focused on IBM System/38, LISUG expanded

to encompass diverse platforms and technologies. Monthly dinner meetings feature networking, industry leader presentations and Q&A sessions. Members benefit from discounted rates and savings on COMMON registrations. Join LISUG to connect with experts, gain cutting-edge insights and further your career in a dynamic tech environment. Engage with peers and industry leaders to stay ahead in the world of technology!

Northeast User Group Conference

www.neugc.org / registration@neugc.org or vendors@neugc.org

The Northeast User Group Conference (NEUGC) unites IBM Power user groups from Connecticut, Maine, Massachusetts, New Hampshire, Rhode Island and Vermont to host an annual technical conference in Framingham, Massachusetts. Held April 7–9, 2025, the 33rd annual conference will consist of 50+ sessions, expert speakers and extensive vendor exhibits. NEUGC provides a valuable, affordable experience for attendees while helping the IBM Power community adapt to the rapid pace of technological change. Join NEUGC to connect, learn and grow with peers and industry leaders!

Tennessee (Nashville)—IMUG Midrange Users Group

imugtn.org / 270-885-9011

IBM Midrange User Group (IMUG) is an organization serving the IBM Power community in Nashville and its surrounding areas. Members can meet in person or attend the video conference online for each monthly meeting. Membership connects you to presentations from a network of industry leaders and a supportive community of local IT experts.

Central Texas IBM i User Group

ctxiug.blogspot.com / President: Simon Hutchinson, rpgpgm.com@gmail.com

The Central Texas IBM i User Group (CTXiUG) is a community of passionate technology experts focused on sharing knowledge about IBM i and everything related to it. No topic is too unique or niche for CTXiUG. The group was founded in 2020 and is always looking for members in central Texas, including metropolitan Austin and San Antonio areas. The user group meets every other month and has successfully brought a host of IBM champions and other accomplished people in the IBM i community to present exciting new ideas to the group. Each meeting is accessible online to anyone who registers.

Wisconsin (Elm Grove)—Wisconsin Midrange Computer Professional Association

wmcpa.org / President: Marina Schwenk, president@wmcpa.org

The Wisconsin Midrange Computer Professional Association (WMCPA) connects members to exchange knowledge about midrange systems. It hosts monthly dinner meetings featuring guest speakers and a two-day Spring Technical Conference every March. Membership is open to anyone using or supporting midrange systems like IBM i or involved in related software and hardware development.

AI

- Profound Logic23**
 - Artificial Intelligence
 - Integration

APIS

- Midrange Dynamics North America20**
 - MDRest4i

APPLICATION DEVELOPMENT

- LANSA.....15**
 - Professional Low-Code Development
- ProData.....21**
 - DBU
 - RDB Connect
 - SQL/Pro
- Programmers.io24**
 - IBM i Application Development
 - IBM i Staff Augmentation
- Remain Software30**
 - Remain API Studio
 - TD/OMS

APPLICATION MODERNIZATION

- CM First10**
 - CM evolveIT metaTX-AI for IBM i
 - Managed Application Services
- LANSA.....15**
 - IBM i Application Modernization
- Profound Logic23**
 - Code Transformation

APPLICATION TESTING

- Midrange Dynamics North America20**
 - MDTest

**BUSINESS INTELLIGENCE/
ANALYTICS**

- LANSA.....15**
 - Embedded Business Intelligence
- Raz-Lee Security28**
 - iSecurity AP-Journal
 - iSecurity Audit

BUSINESS MANAGEMENT

- HarrisData.....13**
 - AppsInHD HRIS
 - HarrisData ERP
 - HarrisData Financials

CLOUD

- Meridian IT19**
 - mPower Cloud Migration Factory
- Racksquared Data Centers26**
 - IBM Power in the Cloud Solutions
 - Intel Cloud Solutions
- Service Express34**
 - Cloud Hosting

CLOUD AND HYBRID CLOUD

- CloudFirst Flagship Solutions9**
 - ezHost
 - ezRecovery
 - ezVault
- Lightedge.....16**
 - Lightedge IBM Cloud
 - IBM on-net with Public Cloud

COBOL

- Programmers.io24**
 - COBOL

CYBERSECURITY

- CloudFirst Flagship Solutions9**
 - ezAutomate

DATABASE

- Raz-Lee Security28**
 - iSecurity DB-Gate

DATA MANAGEMENT

- Meridian IT19**
 - Backup as a Service
- Midrange Dynamics North America20**
 - MDRapid
- Rocket Software.....32**
 - Rocket Data Intelligence

DEVOPS

- Midrange Dynamics North America20**
 - MDChange
- Programmers.io25**
 - DevOps Transformation
- Rocket Software.....32**
 - Rocket DevOps

DOCUMENT IMAGING

- Real Vision Software33**
 - RVI Cloud
 - RVI for IBM i
 - RVI for Windows

EDI

- LANSA.....15**
 - Business Process Integration
- Programmers.io25**
 - EDI

EDUCATION

- imPower Technologies.....14**
 - Online Course: IBM i Concepts and Operations
 - Online Course: Programming in ILE RPG
 - Workshops: RDi and Modular Programming and SQL

HA/DR/BACKUP

- Maxava18**
 - Maxava HA Enterprise+
- Racksquared Data Centers26**
 - IBM Power Cloud Backup Solutions
 - IBM Power Disaster Recovery Solutions

HARDWARE

- Service Express34**
 - IBM Power and Storage

MANAGED SERVICE PROVIDERS

- Meridian IT19**
 - Enterprise Managed Services
- Racksquared Data Centers27**
 - IBM Power Colocation Solutions
- Service Express34**
 - Managed Services
 - OS Upgrades

MODERNIZATION

- Programmers.io25**
 - iA -Impact Analysis Product
 - IBM i Modernization
- Rocket Software.....32**
 - Rocket Continuous Modernization

INDEX BY TECHNOLOGY CATEGORY

OFFICE AUTOMATION AND OFFICE SUPPORT

Computer Keys	11
– KeyesFax	
– KeyesMail	
– KeyesOverlay	
– KeyesPDF	
DRV Technologies	12
– FormFlex	
– SpoolFlex	

PERFORMANCE

Xorux	40
– LPAR2RRD	
– STOR2RRD	
– XorMon	

SECURITY

Maxava	18
– Maxava Security Maxular	
Raz-Lee Security	29
– iSecurity Anti-Ransomware	
– iSecurity Antivirus	
– iSecurity Firewall	
– iSecurity Multifactor Authentication	
Software Engineering of America	36
– iSecurity Multi Factor Authentication (MFA)	
– iSecurity Suite: End-to-End Security for IBM i	

SERVICES/CONSULTING

Racksquared Data Centers	27
– Managed IT Services	

SYSTEMS MANAGEMENT

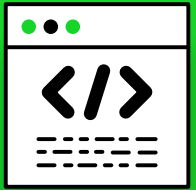
DRV Technologies	12
– MessageFlex	
M81	17
– Flash for i	
Maxava	18
– Maxava Monitor Mi8	

Racksquared Data Centers	27
– IBM Power Administration Services	

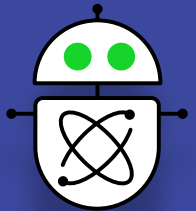
Software Engineering of America	36
– absMessage: IBM i Message and Resource Monitoring	

TOOLS AND UTILITIES

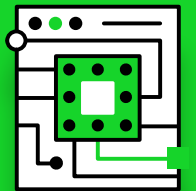
M81	17
– Control for i	
Remain Software	30
– XREF	
TL Ashford	38
– Barcode400	
– TLA Forms	



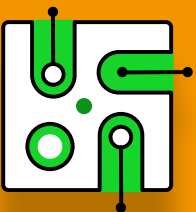
TechChannel



Unlock a world of cutting-edge technology insights with TechChannel, your ultimate resource in the ever-evolving IT landscape. Dive into our expert articles, engaging webinars & thought-provoking podcasts covering the latest in IBM Power and mainframe technologies.



Discover TechChannel.com today and join a community of experts and enthusiasts.



EXPLORE
TechChannel.com

2025
SOLUTIONS
DIRECTORY

