

Solutions Directory

Install update?

Yes

No

```
** 2026/01/01 Solution**
```

```
:: mkdir IBM_Power
```

```
:: _
```



Services.txt



Software ISUs



Articles



Product Listings



Stats.svg



Software.exe



2026 Budget.csv

Nearly 100%
of readers say



TechChannel newsletters are trusted sources of relevant and useful IT news and information.*

Join and learn from a community of tech experts, luminaries and professionals who are shaping the future.

* TechBeat and Webinar surveys, August and September 2024

SUBSCRIBE NOW



TechChannel /subscribe

TechChannel[™]

TechChannel.com

953 Westgate Drive, Suite 107
St. Paul, MN USA 55114
612-339-7571

Director of Strategic Growth
Lisa F. Kilwein

Publishing Director
Matt Kusilek

Senior Marketing and Sales
Enablement Manager
Maddie Silverson

Marketing and Sales
Enablement Manager
Greta Ackerman

Editor-in-Chief
Evelyn Hoover

Senior Editor
Andrew Wig

Art Director
Mike Kooiman

Project Manager
Maddie Burke

Audience Development
Chris Birkholm
Hannah Johnson

Webinars Manager
Melissa Kusilek

Subscriptions:
TechChannel.com/Subscribe

Content inquiries:
awig@mspcagency.com

Sales and Marketing inquiries:
lkilwein@techchannel.com

Copyright 2026 by MSPC,
a division of MSP Communications.

mspc

EDITOR'S LETTER

Discover Innovation: The 2026 TechChannel Solutions Directory

Navigating the complexities of modern IT infrastructure requires the right tools and partners. That's why we continue to publish our TechChannel Solutions Directory.

The 2026 directory is your comprehensive guide to the hardware, software and services that power the IBM ecosystem. If you are an IT leader working with IBM Power servers, this directory is designed to help you discover the solutions needed to drive your business forward.

Inside, you will find best-in-class offerings from leading business partners and ISVs from around the globe. This resource is designed to connect you with the expertise necessary to tackle your most pressing challenges. From application modernization and cybersecurity to implementing AI and hybrid cloud strategies, the partners featured here provide the critical technologies to optimize your systems.

I've always believed that the strength of a platform lies in the vibrancy of its surrounding community. The Solutions Directory is a testament to that, showcasing the innovation that helps organizations like yours enhance performance, secure critical data and adapt to an ever-evolving technology landscape. We trust this directory will serve as an invaluable tool in helping you find the right partners to achieve your strategic goals.

EVELYN HOOVER
EDITOR-IN-CHIEF, TECHCHANNEL

Note to readers: TechChannel has not verified or substantiated any of the claims made by the business partners in their Solutions Directory company descriptions or product listings.

Solutions Directory

TechChannel 2026

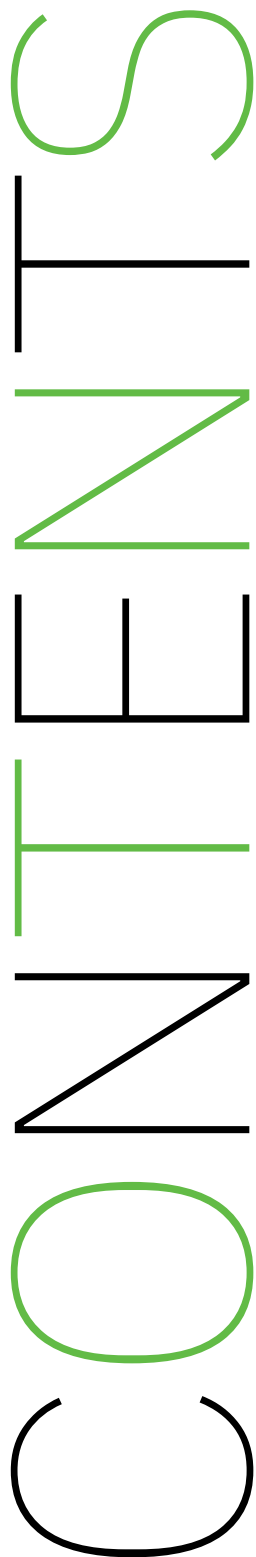
- 4 Modern Development Environments
- 8 New Products, Tools and Services

COMPANY AND PRODUCT LISTINGS

- | | | | | |
|--|---|---|---|---|
| 9 CloudFirst <ul style="list-style-type: none">– Cloud and Hybrid Cloud– Managed Service Providers– Modernization | 16 Fortra <ul style="list-style-type: none">– Business Intelligence and Analytics– Compliance– Cybersecurity– HA/DR/Backup– Performance and Capacity Planning– Systems Management | 24 M81 <ul style="list-style-type: none">– Systems Management– Tools and Utilities | 30 Racksquared Data Centers <ul style="list-style-type: none">– Cloud and Hybrid Cloud– HA/DR/Backup– Managed Service Providers– Services Consulting– Systems Management | 37 Software Engineering of America <ul style="list-style-type: none">– Security– Systems Management |
| 10 CM First <ul style="list-style-type: none">– Application Modernization | 18 HarrisData <ul style="list-style-type: none">– Business Management | 25 Maxava <ul style="list-style-type: none">– Data Management– HA/DR/Backup– Security | 32 Raz-Lee Security <ul style="list-style-type: none">– Compliance– Cybersecurity– Database– Multifactor Authentication | 38 TL Ashford <ul style="list-style-type: none">– Barcode– Document Management |
| 11 CNX <ul style="list-style-type: none">– Application Development | 19 imPower Technologies <ul style="list-style-type: none">– Education | 27 Midrange Dynamics North America <ul style="list-style-type: none">– APIs– Application Development– Application Testing– Database | 34 Remain Software <ul style="list-style-type: none">– Application Development– Tools and Utilities | 39 PERSPECTIVE: “TLAForms: The Smarter Way to Create and Manage Forms on IBM i” by Mike Schuett, Director of Marketing, TL Ashford |
| 12 Cobalt Iron <ul style="list-style-type: none">– HA/DR/Backup | 20 Integrative Systems <ul style="list-style-type: none">– Application Modernization– Business Intelligence and Analytics– IT Infrastructure | 28 ProData <ul style="list-style-type: none">– Application Development | 36 Service Express <ul style="list-style-type: none">– Cloud and Hybrid Cloud– HA/DR/Backup– Hardware– Managed Service Providers | 40 Vanguard Integrity Professionals <ul style="list-style-type: none">– Compliance |
| 14 Computer Keys <ul style="list-style-type: none">– Office Automation and Office Support | 22 Lightedge <ul style="list-style-type: none">– Cloud and Hybrid Cloud– HA/DR/Backup– Managed Service Providers– Migration | 29 Profound Logic <ul style="list-style-type: none">– AI– APIs– Application Modernization | 41 Xorux <ul style="list-style-type: none">– Performance and Capacity Planning | |

RESOURCES

- 43 IBM Power User Group Roundup
- 46 Index by Technology Category



Modern Development Environments = Happy Developers

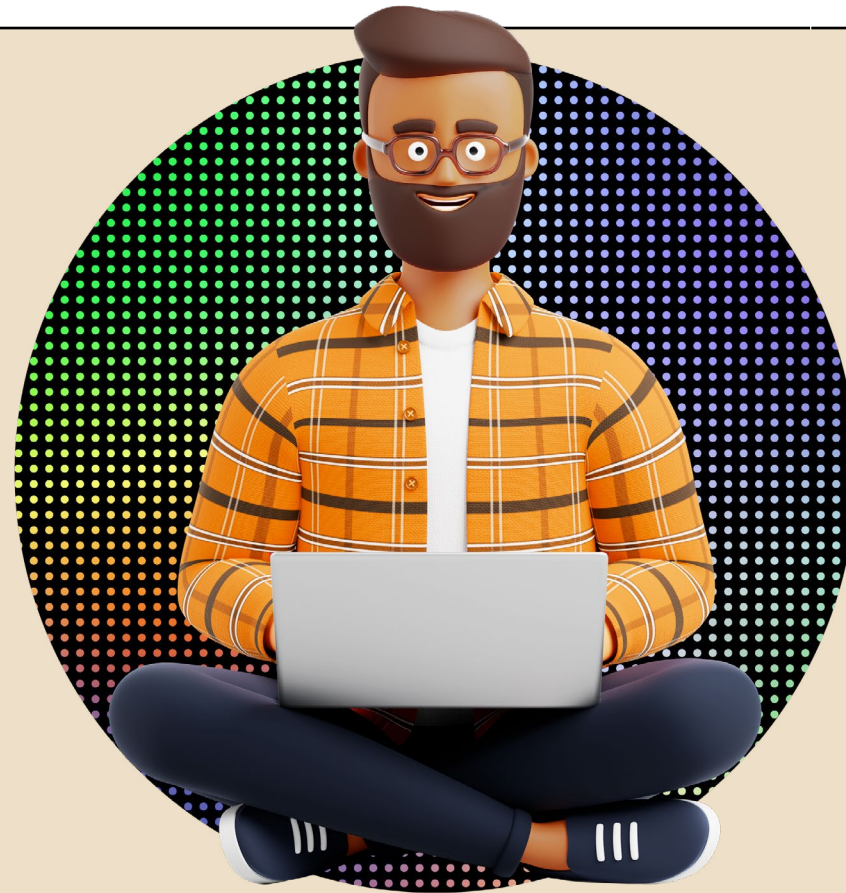
To ensure they can attract the talent they need to keep functioning, IBM i shops are embracing modern development environments to make the platform welcoming to a new generation of technologists

BY ANDREW WIG

One of the keys to recruiting and keeping top talent is creating a work environment they can be comfortable in. That may include cultural factors such as communication styles and attitudes on work-life balance, or physical considerations such as office layout and amenities. But in IT, there's another environmental consideration that managers have to account for: the development environment.

Having enough workers with the skills required to work on IBM Power platforms is still a top concern in the community, and when it comes to recruiting young technologists to replace those who are leaving the workforce, green screens don't cut it anymore.

"Companies need to be moving to more modern user interfaces. Young developers



don't want to write on green screens, they just don't," Brian May, principal technology evangelist at Profound Logic and former chair of the COMMON Education Foundation, said in an interview with TechChannel.

IBM i is a relatively uncommon subject in computer science education, and developers who weren't exposed to it in school aren't likely to have any familiarity with it, May noted. Andrew Langlois, a 2024 TechChannel Rising Star, went to one of the few colleges that offer IBM i courses. In his Rising Stars application, he vividly recalled his introduction to the platform.

"I was confused ... oh so very confused," he wrote. "What is this green-on-black backdrop? Where's the point-and-click GUI? You mean I need to communicate with the system through the command-line? DDS? Column-dependent source code?"

COMFORT THROUGH FAMILIARITY

Langlois' learning experience might have been less jarring had his IBM i introduction been mediated by a more standard development environment. And across platforms, the standard bearer for such interfaces is Visual Studio Code, which was made available as an IBM i extension in 2021.

According to Fortra's 2025 IBM i Marketplace Survey, VS Code for IBM i is now neck-and-neck with Rational Developer for i (RDi) as the most popular modern development environment on the platform. Despite RDi having been available for over twice as long as VS Code for IBM i, its popularity surpasses VS Code by only 1 percentage point—54% of respondents to Fortra's survey said they used the tool, compared to 53% for VS Code. (The other modern development tool mentioned in the Fortra report, the 3-year-old Merlin, lags far behind, at 2%. IBM withdrew marketing and service for Merlin in October 2025.)

Overall, the Application Development Tool Set remains the most popular IBM i development environment, thanks to experienced developers' high level of familiarity with it, the Fortra survey report stated. "However," the report continued, "the adoption of cutting-edge practices is essential for attracting and retaining talented software developers, and the wide use of more modern tools like RDi, Visual Studio Code, and Merlin points toward a bright future for young developers working on this platform."

VS CODE VS. RDi

To make IBM i attractive to young developers, "for me, the key is VS Code," May said, "... because Visual Studio Code is the most popular development environment for all languages." That level of familiarity, he continued, "just completely eliminates one barrier."

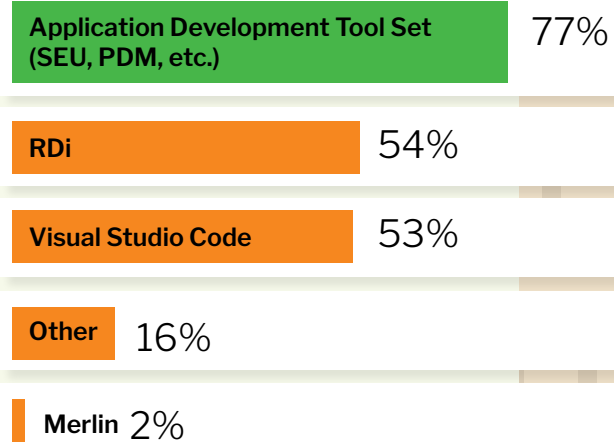
VS Code's popularity is boosted by the fact that it's free—always an important factor in adoption, especially for young developers who are just getting their start, May noted. He added that cost is VS Code's major advantage over its counterpart, RDi, which still has some features that VS Code doesn't.

For example, he believes that RDi's Outline View is still superior to VS Code, "but that's improving."

VS Code can't yet do everything RDi can do, but the same is also true in reverse, May said. "At this point, it's kind of a preference thing, but if we're focusing on younger developers, chances are they've used VS Code and they probably haven't used Eclipse, which is what RDi is based on."

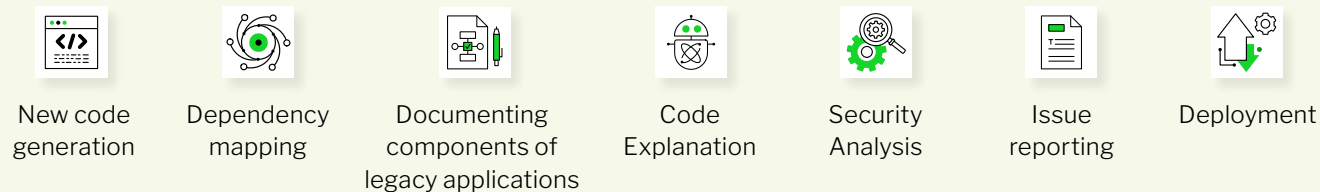
Development Environments on IBM i

Respondents to Fortra's 2025 IBM i Marketplace Survey were asked to list the development environments they were using:



Project Bob to Bring AI Code Assistant to IBM i

Plans for a code assistant specifically designed for IBM i gave way in fall 2025 to a larger project that promised to bring those capabilities, and more, to the platform. Planned for general availability in 2026, IBM is promising that the platform-neutral Project Bob will assist along the entire CI/CD pipeline in tasks such as:



MODERN TONGUES

Just as young developers appreciate modern development environments, they also prize the chance to work with modern coding languages. On IBM i, those are exemplified by free-format RPG, available in RPGLE, which bears similarity to many other languages, May noted. “It kind of feels like most other languages. It’s not a huge transition,” he said.

Also helping to ease young developers’ transition to IBM i is the high degree of familiarity they tend to have with JavaScript, since that’s what Node.js, the popular runtime environment for IBM i, is based on. Whether you’re a Java developer or a .Net developer, “you have to know JavaScript for your front end. So it’s kind of one of those languages everyone has to know to some extent,” May said.

For cases where developers have to work with old RPG, they will soon have access to help in the form of Project Bob, IBM’s forthcoming platform-neutral, AI-powered integrated development environment (IDE). Replacing IBM’s prior plans for watsonx Code Assistant for i, Project Bob’s wide-ranging features will include the ability to help developers understand RPG code. That kind of feature, May said, will be “a huge help” for developers unfamiliar with the old coding language.

A LEARNER-FRIENDLY PLATFORM

There are many reasons IBM i doesn’t have the name recognition of other platforms, but it is not a difficult platform to learn, according to May. One clue to that lies in its name—the “i” stands for “integrated,” meaning there isn’t a catalog of disparate components to learn.

“It’s probably one of the easiest as far as enterprise environments are concerned, because you don’t have to worry about all of the complexities. Most of that’s already been handled for you. You can just write business code, which is the strength of the platform,” May said.

Through his past work with the COMMON Education Foundation and his regular attendance at IBM Power conferences like COMMON’s POWERUp, May routinely has the honor of seeing the light bulb go on for young technologists who are just discovering IBM i.

“Young developers are our lifeblood. We’ve got to have them. So it’s always great to see their faces light up when it clicks,” he said. “... And when it clicks, you can see that they’re kind of blown away about how simple it can be to write business applications on.” ■





SOLUTIONS DIRECTORY 2026 PRODUCT LAUNCHES

By accelerating innovation and embracing digital transformation, IBM Power clients can unlock greater efficiency, stay ahead of their competition and deliver exceptional value to their customers. The following partners and ISVs are introducing exciting new offerings, fueling the dynamic IBM Power partner ecosystem. Take this opportunity to explore these groundbreaking solutions and see how they can enhance your business.

HA/DR/Backup

Cobalt Iron Compass from Cobalt Iron

Cobalt Iron Compass delivers simple, automated and resilient data protection for complex workloads anywhere—in-cloud, on-premises or hybrid. By unifying backup, recovery and cyber protection, this enterprise-grade, end-to-end solution ensures your data is secure, available and easy to manage, resulting in continuous availability for all applications and workloads.

[Learn more on page 12 →](#)

HA/DR/Backup

HA/DR (High Availability/ Disaster Recovery) from Fortra

Whether you're looking for data replication that's software-based or hardware-based, Fortra has you covered. Our IBM i experts develop and support the easy-to-install Robot HA software solution along with Power HA, a hardware solution. If you're unsure which kind of replication you need, we'll help with that, too.

[Learn more on page 16 →](#)

Application Development

IBM i Application Modernization from Integrative Systems

While preserving IBM i's unmatched stability and security, Integrative Systems will enhance usability, agility and responsiveness across your business applications. We excel in modernizing IBM i applications by enabling API integrations and delivering sleek, intuitive, browser-based UIs—for simplified workflows, faster onboarding, higher user satisfaction and sustainable long-term value.

[Learn more on page 20 →](#)

Compliance

Vanguard Compliance Manager for IBM i (VCMi) from Vanguard Integrity Professionals

VCMi helps organizations enforce the Center for Internet Security (CIS) standards on IBM i systems by automating the audit and compliance process. While providing a robust baseline for cybersecurity best practices, VCMi automates foundational security requirements on IBM i, saving time and improving report accuracy.

[Learn more on page 40 →](#)



CloudFirst empowers organizations to thrive in today's digital, compliance driven, and risk intensive landscape by delivering secure, scalable, and compliant cloud infrastructure solutions. We combine enterprise-grade cloud technology with personalized, boutique level service to provide custom cloud hosting and modernization solutions. Our approach ensures your mission-critical applications perform reliably and efficiently, supporting long term business continuity, scalability and growth.

• cloudfirst.host • info@cloudfirst.host • 631-608-1200

Cloud and Hybrid Cloud

Managed Cloud Hosting

CloudFirst's Managed Cloud Hosting is the ideal home for your mission-critical data, offering a scalable, secure and fully managed environment for compute, storage and connectivity to hyperscale providers. Migrate from legacy systems to an enterprise-grade cloud solution with guaranteed 100% performance and a flexible, cost-efficient model built to support your business today and scale for tomorrow.

Managed Service Providers

Managed Services

CloudFirst provides a unique management overlay solution to enable enterprises to transition seamlessly into a high-performance cloud infrastructure with PowerVS, utilizing our managed-service skills to deliver an additional layer onto this self-managed system. This gives our customers the best of both options, enabling them to modernize and migrate their IBM Power servers with confidence while reducing operational complexity.

Modernization

Modernization & Innovation

Legacy systems often lack the visibility, control and resilience required to withstand today's cyber threats or meet evolving compliance standards, leaving your business exposed. CloudFirst delivers security-first cloud solutions built for today's risk environment. With integrated services like Backup as a Service, our Protection Suite and compliance-aligned frameworks, we help you safeguard critical data, meet regulatory requirements, minimize downtime and simplify oversight through managed cloud infrastructure and proactive threat defense.



CM First builds the most reliable, rapid and cost-effective software tools to optimize and transform enterprise applications. CM First products and services empower developers of IBM mainframe and midrange applications to advance their legacy code in the new digital economy, focusing on custom applications written in COBOL, RPG, Java, CA 2E (Synon), CA Plex, LANSAs and other languages. CM First has served the IBM i and IBM Z communities since 1999 and is headquartered in Austin, Texas, with additional offices in Europe.

- cmfirstgroup.com • info@cmfirstgroup.com • 888-866-6179

Application Modernization

CM evolveIT metaTX-AI for IBM i

CM evolveIT metaTX-AI is an innovative enterprise code analysis workbench for IBM Power developers and systems integrators. CM evolveIT metaTX-AI reduces analysis costs by up to 80% by employing modern AI tools, advanced code slicing technology and best-of-breed code visualizations and analytics, while adding powerful transformative capabilities with tools that automate the conversion of legacy code to Java.”

Managed Application Services

CM First’s Managed Application Services (MAS) help organizations manage, enhance and maintain custom enterprise applications as an extension of your dev team, over the full lifecycle. Available worldwide and covers operational guidance, software development, version uplift consulting, platform migration, performance tuning, capacity planning and even informal staff knowledge transfer.



CNX develops the Valence Framework, a comprehensive software suite for IBM Power servers. Valence enables businesses to modernize legacy applications and create new applications, with its flagship Nitro App Builder offering a low-code solution for fast, user-friendly development. By allowing developers to build and deploy modernized or new applications much faster, Valence significantly boosts productivity, delivering substantial value to organizations using IBM Power servers. CNX is part of Izzi Software.

- <https://cnxcorp.com> • sales@cnxcorp.com • 312-477-7450

Application Development

Fusion5250

Fusion5250 is a powerful, fully browser-based 5250 emulator, no Java required. Built to scale, it supports very large teams with hundreds of users while ensuring smooth performance. Users can create startup macros to automatically launch the screen they need, streamlining daily tasks. Fusion5250 provides secure, reliable access to IBM i applications across any modern browser, giving organizations a simple, scalable way to keep their green-screen apps accessible and efficient.

Nitro App Builder

Nitro App Builder is a low-code platform that lets you build IBM i apps in minutes or hours, not days or months. Leverage AI to accelerate development even further while empowering users to download data to Excel, print to PDF and add or update data with ease. Nitro App Builder makes IBM i work for you by simplifying workflows and enabling teams to create modern apps without deep coding expertise.

Valence

Valence is an enterprise application development platform that empowers IT and business leaders to transform operations on and off the IBM i platform. With Valence software, developers gain a full suite of development and runtime tools for creating and deploying truly modern applications that run on the user’s device of choice—desktop, laptop, tablet or phone. This gives developers and users the tools they need to enable true IBM i modernization to improve operational speed, agility and mobility.

Valence Framework makes your IBM i work for you by accelerating app development and modernizing the user experience. Run all your applications, both new modern apps and existing green-screen apps, side-by-side from a single Valence portal, without juggling multiple software subscriptions. By helping developers quickly create sleek, responsive apps that run seamlessly across devices, Valence saves time while delivering user-friendly, modern solutions.

PRODUCTS



Cobalt Iron's Compass platform delivers modern data protection for enterprise customers supporting on-premises, cloud and hybrid workloads. Trusted by companies in more than 47 countries, Compass redefines data protection with simplicity, cybersecurity and unmatched reliability. Through analytics and automation, Compass enables enterprises to transform and optimize legacy backup solutions into a simple cloud-based architecture with built-in cybersecurity.

• cobaltiron.com • info@cobaltiron.com • 888-584-4766

HA/DR/Backup

Cobalt Iron Compass

Cobalt Iron Compass delivers simple, automated and resilient data protection for complex workloads anywhere—in-cloud, on-premises or hybrid. Designed for enterprise-scale simplicity and intelligence, Compass unifies backup, recovery and cyber protection to ensure your data is secure, available and easy to manage.

Key Advantages:

- Simple, automated protection: Eliminates manual backup processes with policy-based automation that adapts to dynamic workloads.
- Built-in cyber resilience: Detects and defends against ransomware and threats with automated security controls and immutable data protection.
- Scalability and high performance: Easily scale to protect petabytes of data while maintaining speed, reliability and efficiency.
- Unified management: Centrally manage all environments and workloads through a single interface.
- Hybrid and multi-cloud flexibility: Supports seamless protection for workloads across cloud, on-premises and hybrid infrastructures.
- Support for diverse workloads: Protect Windows, Linux, AIX, VMware, OpenShift, Kubernetes, IBM i, MacOS, Db2, Oracle, SAP, SAP HANA, MSSQL and more.

Power and IBM i Advantages:

- Integrated VTL: Fully supports AIX, Linux and IBM i with integrated software VTL capabilities.
- Optimized for Power VS: Extends consistent data protection policies across Power VS, on-premises and hybrid architectures.
- Reliable replication and recovery: Proven replication across geographies for rapid, resilient recovery.

Result:

Compass provides enterprise-grade, end-to-end backup and recovery that simplifies data protection, enhances cybersecurity and ensures continuous availability for all applications and workloads.

Level Up Your IT Skills with

TechChannel Webinars

EDUCATIONAL

TIMELY

RELEVANT

TRUSTED

INTERESTING

USEFUL

VALUABLE

INFORMATIVE

RELIABLE

TECHNICAL

QUALITY

CURRENT

Join the nearly 100% of IT professionals who find our webinars essential for staying current and solving industry challenges!

→ Led by Industry Experts

→ Live or On-Demand Access

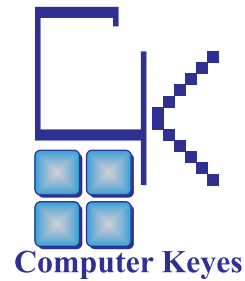
→ Subscribe for Exclusive Invitations

SUBSCRIBE NOW



TechChannel.com/subscribe

*TechBeat and Webinar surveys, August and September 2024



Computer Keyes is a leader in document distribution software for IBM i. kLink allows your employees and customers to securely transfer and access IBM i documents from any mobile device or browser. KeyesOverlay rapidly converts standard SCS printer files into eye-catching PDF documents in full color. KeyesOverlay can also be used to create interactive forms. KeyesArchive will archive spool files into your IFS and optionally index the individual documents or reports within the spool files. KeyesMail and KeyesFax are powerful multifunctional email and fax systems. KeyesPDF converts spool files into images or PDF documents. Computer Keyes has been developing software solutions since 1978.

- ckeyes.com • sales@ckeyes.com • 425-776-6443

Office Automation and Office Support

KeyesFax

KeyesFax is a full function automated IBM i fax system. Spool files are burst by fax number and auto transmitted with overlays. It combines a send-and-receive facsimile processing system with a complete image package. The fax software will edit, send, receive, display, print and track fax documents or images using any standard IBM i without additional expensive hardware, software or subscriptions.

KeyesMail

KeyesMail is a powerful multifunctional email system for IBM i. Burst spool files into PDF, RTF or TIF attachments with overlays. The system contains a full set of APIs and monitors an output queue making auto responses, auto forwards or report distribution quick and easy. Email can be accessed from any browser or terminal. The green-screen editor can view Microsoft Word attachments. KeyesMail connects to any mail server.

KeyesOverlay

KeyesOverlay rapidly converts spool files into eye-catching full-color PDF documents. Create graphical overlays in full color (or black and white), then easily map your spool file text with different fonts, sizes and colors. KeyesOverlay can also create interactive forms for your customers to fill out and email or submit back to you.

KeyesPDF

KeyesPDF converts a spool file into an image. The resulting image can be used for any desired purpose, such as emailing or posting to a website. Spool files can be standard SCS printer files, AFPDS spool files or USERASCII spool files with HP-PCL code. The spool files will be converted into TIFF images, PDF documents or ASCII text and placed either in a physical file, into your IFS or onto a network drive. The resulting file can then be emailed, transferred or copied to another destination as desired.



DRV Technologies Inc. is a software development company creating innovative solutions to help customers get more from their IBM i systems.

DRV's family of FlexTools software solutions streamlines resources, improves efficiency and enables proactive system management. These solutions include paperless reporting and electronic forms with emailing and archiving, secure check printing and IBM i system monitoring.

- drvtech.com • info@drvtech.com • 866-378-3366

Office Automation and Office Support

FormFlex

FormFlex native IBM i software replaces preprinted forms and checks with clean electronic forms that print, PDF, email and archive. FormFlex requires no programming or PC servers. Other features include:

- Print forms to laser printers on plain paper
- Track, search and view what was sent
- Integrated PDF, email and archiving
- Add SecureChex to print MICR laser checks

FormFlex replaces obsolete, unsupported legacy tools and is available at a flat price for unlimited users.

SpoolFlex

SpoolFlex native IBM i software delivers an automated solution that quickly provides reliable, traceable, paperless report distribution in the formats users need. Features include:

- Convert spool files to PDF, Excel and more
- Fully automated report delivery
- Integrated emailing and archiving
- Track, search and view what was sent

SpoolFlex requires no programming or PC servers and is flat priced for unlimited users.

Systems Management

MessageFlex

IBM i system messages can tell you how the system is performing, provided someone is logging on and reviewing those messages. With increasing reliance on core technology, companies must find innovative solutions to ensure their systems are running smoothly without the constant oversight of dedicated personnel.

DRV's MessageFlex software monitors IBM i message queues for system and program messages—proactively sending notifications by email, text message or forwarding messages without human intervention.



Fortra provides IBM Power customers with industry-leading solutions for systems automation, cybersecurity and business intelligence.

Trusted by thousands of organizations worldwide, Fortra combines unparalleled IBM Power expertise with world-class solutions that help align IT and business goals, overcome staffing challenges and stay ahead of evolving technological demands.

- power.fortra.com • info@fortra.com • 952-933-0609

Business Intelligence and Analytics

Business Intelligence

With powerful query and reporting capabilities, Fortra makes it easy to access, analyze and distribute data exactly how you want it. Fortra's BI portfolio also improves enterprise-wide data access with data warehousing, a mobile interface and executive dashboards and reporting. For those looking to replace outdated BI solutions like Query/400 and DB2 Web Query, it only takes minutes for Fortra's BI to import and improve existing queries.

Compliance

Auditing and Compliance Reporting

Complying with cybersecurity mandates like PCI DSS, SOX, GDPR, DORA, NIST or even your own internal security policy is difficult enough. But proving your systems are compliant can be the most time-consuming and difficult part of the process. Fortra's user-friendly compliance solutions allow you to reduce the time spent reviewing reports, quickly supply auditors with the information they need and identify security issues in an instant.

Cybersecurity

Intrusion Detection and Prevention

Fortra's powerful cybersecurity tools provide multiple layers of defense—so that you're protected from both external and internal threats. Scan your environment for malware, secure access to your IBM i, monitor your network for malicious activity and alert your security team the moment any suspicious activity is uncovered. Fortra makes it easy to simultaneously safeguard business critical data and accelerate your threat response.

Identity and Access Management

Secure your system by managing user privileges and access to sensitive data—without getting in the way of productivity—with Fortra's identity and access management solutions. Simplify your user profile management, verify that users are who they say they are with multifactor authentication, eliminate password management costs with single sign on (SSO), and reduce the risk of internal threats by eliminating over-privileged users.

HA/DR/Backup

HA/DR (High Availability/Disaster Recovery)

Whether you're looking for IBM i data replication that's software-based or hardware-based, Fortra has you covered.

Our team of IBM i experts develops and supports the easy-to-install Robot HA software solution. We also develop and maintain Power HA, a hardware-based solution. If you're not sure whether hardware or software replication is right for your environment, we can help you understand the factors you'll want to consider.

Performance and Capacity Planning

Performance Monitoring and Planning

Minimize downtime and optimize performance with Fortra's monitoring solutions. Whether the culprit is poor application performance, resource strain or network failures, Fortra can help you find and fix issues before users are impacted. We can also help plan hardware upgrades to Power11 for AIX, IBM i and Linux on Power customers. You'll get IBM performance collection data at the ready, achieve real-time monitoring and root cause analysis and make accurate capacity predictions in an instant.

Systems Management

Automation

Fortra offers automation solutions with robust reputations and best-in-class tooling for every environment. These solutions include job scheduling, storage management, document and spool file management, plus monitoring of QSYSOPR and critical resources like jobs, subsystems and job queues. Modern interfaces and enterprise-class functionality make it possible for even novice teams to manage systems by exception, freeing up time to focus on IT initiatives that add value and impact the bottom line.



HarrisData is a family-owned and -operated business that has succeeded for over 50 years through a commitment to excellence and a determination to serve customers well. Developing enterprise application software solutions for mid-sized businesses, HarrisData offers ERP, HRIS, CRM and financial management. Implementation strategy focuses on getting live quickly; development focuses on features that deliver value, with the license designed around our customers. Our software delivers the basic tools that help you grow your business.

• harrisdata.com • sales@harrisdata.com • 262-784-9099

Business Management

AppsInHD HRIS

AppsInHD HRIS provides a hands-off HR/payroll solution. The interactive aspect eliminates the complexity of processes with pervasive automation using upfront rules configuration. You can plan ahead, set calendars and feed the pay transactions—plus, AppsInHD HRIS runs payroll. Paycheck recalculation on-demand eliminates the need to do complete payroll reruns, and alerts allow for better business management. The UI allows enterprise users to organize work, eliminate busywork and get jobs done quickly and efficiently.

HarrisData ERP

HarrisData's ERP is an expert-integrated system designed exclusively for IBM Power servers. A comprehensive set of integrated applications manages the flow of information throughout the enterprise, including manufacturing, distribution, accounting, CRM, purchasing, human resources, payroll and employee self-service. Flexibility enables companies to respond quickly to customer demands, control costs and reduce time to market. Enabling improved processes and tools such as lean manufacturing and Kanban boosts productivity and profits while reducing waste for companies.

HarrisData Financials

HarrisData's state-of-the-art financial application utilizes the latest browser-based, drill-down functionality, simplifying preparation, analysis and interpretation of financial statements. Access to information such as source data is readily available for any transaction at any time. Accounts Payable provides the tools to control cash expenditures, improve cash management, provide comprehensive vendor management and reduce effort. Accounts Receivable manages the task of recording sales and collecting cash, including invoice entry, aging, collections, cash posting and customer management.



• impowertechnologies.com • 262-455-0408

imPower Technologies helps companies hire and train the next generation of IBM i developers. We provide online, self-paced, instructor-led IBM i training for new and seasoned developers. Our courses enable new developers with little to no IBM i experience to become highly competent and seasoned developers to learn new tools for modernization. Courses include videos, sample programs, graded quizzes, weekly meetings and the use of an IBM i partition.

Education

Online Course: IBM i Concepts and Operations

This comprehensive course is designed for entry-level and other platform developers to learn the IBM i. Upon completion, students will be proficient in using the IBM i operating system, Db2 database and IBM's new development tools. The course includes a mixture of videos, graded quizzes and labs, and weekly online meetings to ensure optimal retention and understanding of the course material. Class duration varies and is based on student activity—maximum of eight weeks.

Online Course: Programming in ILE RPG

Train new and current developers on the ILE RPG language in less than 10 weeks. Students will learn the latest RPG techniques with each section covering two chapters of Jim Buck's* Programming in ILE RPG 5th edition textbook. The course is a combination of lectures, graded quizzes, programming examples and programming assignments. Students are invited to attend live Webex meetups once a week to ask questions during the course.

Online Workshop: RPG Evolution: Modular Mastery with Modern Tools

Taught by Jim Buck.* Elevate your RPG skills in this self-paced, 18-hour online course. Master cutting-edge techniques like modules, procedures and service programs using modern tools including IBM's RDi and VS Code. Through video instruction and hands-on labs, you'll learn to decouple legacy interfaces, harness SQL and integrate with today's technologies. Perfect for developers with basic free-format RPG experience ready to transform their code and boost productivity!

Online Workshop: SQL Queries

Taught by Birgitta Hauser, this self-paced workshop with labs, quizzes and over 12 hours of video instruction is an introduction into structured query language (SQL) for selecting, joining and aggregating data located in database tables. In this workshop you will be introduced to IBM i Access Client Solutions – Run SQL Scripts, which is IBM's strategic product for entering and executing SQL statements.

Online Workshop: { RESTful APIs } on IBM i—New Workshop

Taught by Patrick Behr, this hands-on workshop delivers 30+ hours of expert-led training with 10 hours of videos, labs and quizzes covering REST, HTTP, JSON, YAML, OpenAPI and more. Learn to consume external APIs and build scalable IBM i APIs with IWS, strengthen security with HTTPS and OAuth, and gain insight into SOAP and GraphQL—equipping you to modernize applications, enhance connectivity and safely drive innovation on IBM i.

*Jim Buck is CEO, co-founder and lead instructor at imPower Technologies. He has been an IBM Champion for many years and has been teaching IBM i technologies for more than 20 years.

PRODUCTS



Futureproof Your Business

Integrative Systems, an IBM Silver Business Partner, empowers our customers to modernize, optimize and future-proof their IT ecosystems. Specializing in IBM i and Microsoft, we serve global organizations of all sizes to extend teams, accelerate digital transformation and deliver round-the-clock support. Backed by 25+ years of expertise and regular recognition on the INC 5000 list, we deliver business-driven technology solutions that ensure measurable outcomes, long-term value and sustainable growth.

• integrativesystems.com • contact@integrativesystems.com • 866-468-7974

Application Modernization

IBM i Application Modernization

While preserving IBM i's unmatched stability and security, Integrative Systems will enhance usability, agility and responsiveness across your business applications. We excel in modernizing IBM i applications by enabling API integrations and delivering sleek and intuitive, browser-based UIs. Core business logic, processes and data management remain intact, ensuring continuity with modern user expectations. You get simplified workflows, faster onboarding, higher user satisfaction and sustainable long-term value, empowering you to fully leverage your IBM i ecosystem.

IT Infrastructure

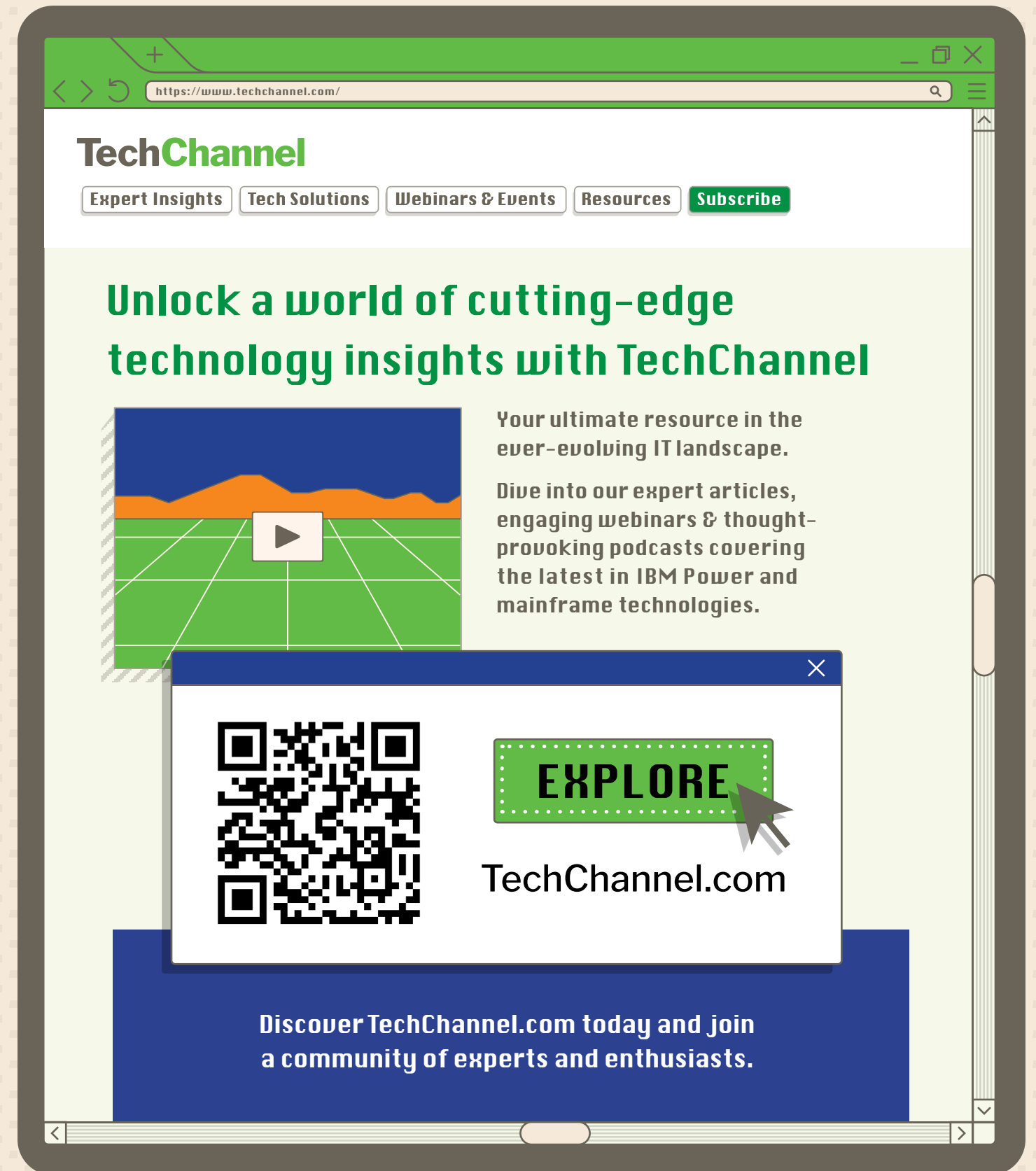
24*7 IT Infrastructure Support

Integrative Systems delivers 24-7 IBM i administration with proactive monitoring, PTF management, job queue oversight, backups and HA/DR readiness. With deep expertise in OS upgrades, security hardening and performance tuning, Integrative Systems extends your IT team to maintain stability and scalability. The result is a secure, resilient and optimized IBM i environment that ensures maximum uptime, seamless growth and mission-critical workloads that are always business-ready.

Business Intelligence and Analytics

Data Management & Analytics

We empower enterprises to unlock insights from IBM i through data optimization, ETL pipelines and BI integrations. From near real-time dashboards to analytics, Integrative Systems transforms raw IBM i data into actionable intelligence in Power BI. With a focus on accuracy, speed and scalability, our solutions enhance decision-making, operational efficiency and measurable business growth while leveraging the robustness and reliability of IBM i systems.





Lightedge delivers secure, compliant and fully managed hybrid cloud solutions built for IBM Power servers. We specialize in IBM i and AIX, integrating colocation, private cloud and public cloud platforms with AWS and Azure. Backed by 24-7-365 expert support, Lightedge helps organizations modernize trusted IBM platforms with confidence—strengthening resiliency, ensuring compliance and unlocking innovation while preserving the reliability these systems are known for.

• lightedge.com • marketing@lightedge.com • 877-771-3343

Managed Service Providers

IBM i Management

Lightedge is North America's largest and most experienced provider of IBM i managed services. With thousands of LPARs under management and a team of veteran IBM system administrators, we deliver complete end-to-end support—from OS updates and PTFs to job scheduling, backups and high-availability monitoring. Our proactive 24-7 management reduces downtime, ensures compliance and keeps mission-critical workloads performing at their best—so your business can innovate with confidence, not distraction.

AIX Management

As a recognized leader in AIX managed services, Lightedge combines decades of IBM Power expertise with a proven track record across thousands of LPARs. Our certified specialists provide 24-7 monitoring, performance optimization and modernization support tailored to complex AIX environments. Whether you're sustaining stability or moving toward transformation, Lightedge ensures your AIX workloads remain secure, resilient and cost-effective—helping you maximize the full value of your IBM investment.

Cloud and Hybrid Cloud

IBM On-Net With AWS

Extend the power of IBM i and AIX into the cloud with our secure, low-latency connection to AWS. Lightedge enables hybrid workloads to seamlessly integrate with AWS services such as analytics, AI and storage—without sacrificing IBM reliability. Built on our award-winning IBM Power Cloud, this solution combines the agility of AWS with the performance and resiliency your business depends on, while ensuring compliance and enterprise-grade security every step of the way.

IBM On-Net With Azure

Combine the trusted reliability of IBM Power workloads with the scalability of Microsoft Azure. Lightedge provides certified IBM and Azure expertise, ensuring compliance, security and efficiency across hybrid environments. From seamless workload migrations to integrating cloud-native Azure tools, we deliver a fully managed, 24-7 supported solution. Organizations gain the flexibility to innovate, optimize performance and modernize critical workloads—all while reducing risk and maintaining the reliability their businesses rely on every day.

IBM Power Cloud

Lightedge's award-winning IBM Power Cloud is the flagship platform for IBM i and AIX workloads in North America. Purpose-built for mission-critical applications, it combines IBM's legendary reliability with the flexibility of modern cloud consumption. Integrated directly with AWS and Azure, our Power Cloud delivers high performance, airtight security and seamless hybrid connectivity—backed by 24-7-365 expert support. Lightedge helps organizations modernize trusted IBM platforms with confidence, unlocking innovation while preserving the strengths these systems are known for.

Migration

IBM Migration

Migrating mission-critical IBM workloads from on-prem to the cloud doesn't have to be risky or disruptive. Lightedge has guided hundreds of organizations—banks, manufacturers, healthcare providers and logistics leaders—through seamless migrations, whether lift-and-shift, replatforming or refactoring. Our experts reduce risk, address compliance concerns and ensure business continuity every step of the way. With Lightedge, your IBM environment evolves into a secure, cloud-ready platform that supports growth while protecting your most critical systems.

HA/DR/Backup

IBM DRaaS, High Availability & BaaS

Downtime isn't an option for mission-critical IBM workloads. Lightedge delivers enterprise-grade DRaaS, High Availability and Backup-as-a-Service solutions, powered by SAN-to-SAN replication and industry-leading tools like Mimix. Our team provides continuous monitoring, proactive remediation and verified recovery testing to ensure you meet demanding RPO and RTO objectives. With 24-7-365 expert support and proven recovery strategies, Lightedge keeps your IBM environment resilient against outages, disasters and cyber threats—helping your business maintain uptime, compliance and customer trust.



M81 is a software developer specializing in IBM i solutions. We already have 800-plus end customers in 26 countries (Europe and Americas) running 1,700 LPARs.

We provide two easy-to-use solutions, which are sold by 40 partners worldwide:

- Flash for i allows backups without disrupting production, multiple daily instant recovery copies and test environments created/refreshed instantly.
- Control for i provides full integration of the IBM i into your existing monitoring tool by adding more than 200 plug-and-play controls.

• m81.eu • contact@m81.eu • 470-826-1311

Systems Management

Flash for i

Gain agility on your IBM i, thanks to instant copies (FlashCopies/SnapShots).

No more impact on IBM i production to:

- Perform backups (including Save 21).
- Trigger daily recovery copies (including SafeGuarded copies) to recover your data after loss or corruption due to human error, malware or disaster.
- Generate/refresh new environments in 15 minutes, for analytics, tests, acceptance, preprod, anonymization and more usages.

Tools and Utilities

Control for i

Be more proactive: Get alerts before problems become critical. Integrate the IBM i into your existing monitoring tool by adding more than 200 plug-and-play controls.

Benefits include:

- Everything monitored with a high level of accuracy and responsiveness using only one supervision tool (e.g., Nagios, PRTG, SolarWinds, Zabbix, Pandora, etc.).
- New IBM i controls added in less than 10 minutes without any development.
- Fully accepted by your monitoring administrator.



Maxava is a global leader in high availability, disaster recovery, monitoring and security for IBM i. With 25+ years of expertise, 2,000+ installations worldwide and 24-7-365 support across 40+ countries, Maxava ensures business resiliency for the most demanding IBM i customers. Offering SaaS, cloud, subscription and license models, Maxava delivers superior performance and ease of use. Since 2007, it has pioneered IBM i cloud-based continuity solutions, keeping Maxava HA at the forefront.

• maxava.com • info@maxava.com • 215-713-5930

HA/DR/Backup

Maxava HA Enterprise+

Maxava HA Enterprise+ offers comprehensive high availability and disaster recovery readiness for an IBM i.

- Simulated Role Swap (SRS) enables users to test their disaster recovery plan without downtime.
- Multiple Node Role Swap enables role-swap capabilities between local and remote multiple-node environments.
- Negligible resources consumed on source due to Maxava's unique method of performing dynamic replication.
- Multi-threaded IFS dynamically replicates up to 255 parallel processes to enable faster processing of IFS data on backup systems.
- Command Scripting Function enables pre-enabled commands to be defined and run to reduce failover and role-swap times.

Data Management

Maxava Monitor Mi8

Mi8 cloud-based architecture enables you to monitor local and remote systems for potential issues. Monitored alerts are delivered to the expert you choose, the platform of choice with the capability to allow immediate remedial action.

- Intelligent solution built for multi-platform, "single pane of glass" for IBM i, Windows, Linux and AIX.
- In-house, remote management, co-lo and MSP monitoring is supported.
- Advanced "Filter, Group & Display" (FGD) technology allows you to choose who sees what.
- FGD by business entity, location, systems type, operational area, platform, etc.
- Comprehensive monitoring capability for applications, OS, hardware, high availability, etc.
- "Alert and Response" via multiple device types.

Security

Maxava Security

Protect your mission-critical IBM i data from ever-increasing threats with Maxava Security, a comprehensive solution that adds an invaluable layer of defense, paired with the agility to recover vital information whenever needed.

- Guard against unauthorized access and malicious attacks.
- Granular rules designed to protect critical data.
- Point-in-time recovery.
- Archiving to IBM i and non-IBM i, local, remote and cloud storage supported.
- Exception alerting.

WE ARE COMMON

WHAT DOES A COMMON MEMBERSHIP INCLUDE?

-  Hundreds of hours of expert tech knowledge in our content library available on-demand, 24x7
-  Industry leading conference events to connect and engage with the global COMMON community
-  Boot camps on IFS, RPG, SQL, Security, IBM i fundamentals and more, with new added each year
-  Access to our growing global community, and a connection point for students and employers
-  FREE access to publications, webinars and online tech conferences
-  The opportunity to speak at our conferences and bring attention to what YOU consider important to the tech community

AND EVEN MORE!

LEARN MORE AT
COMMON.ORG



GIVE US A
FOLLOW



IBM i shops large and small trust software and services from MDNA to evolve their IT strategies without hampering productivity. With Midrange Dynamics integrated solutions, meet your DevOps, application modernization, and CI/CD goals on schedule and on budget. Whether you are just getting started or lack software updates, responsive support and reasonable fees from your current vendor, we can help. Our team's decades of experience will make it easier for you to build great applications.

• md-na.com • info@md-na.com • 877-290-6714

APIs

MDRest4i

MDRest4i enables IBM i programmers to build REST APIs and consumers. Quickly build any kind of integration with your IBM i using MDRest4i's ILE Development Framework for RPG and COBOL programs, a software development kit that generates programs for you and an API documentation portal.

Application Development

MDChange

With MDChange, manage software changes throughout the development cycle and automate CI/CD pipelines. Source can reside in source files, IFS or in a Git repository. Deploy programs in one package to IFS or other servers with flexible rollback. MDChange unites IBM i and enterprise development so projects move smoothly to production.

Application Testing

MDTest

MDTest offers powerful unit testing in RDi or VS Code. You can drive more than 30 unit test functions from within the MDChange tool suite. Automated unit testing is executed repeatedly and frequently to identify and resolve defects throughout the software development lifecycle.

Database

MDRapid

MDRapid substantially reduces business application downtime and risk as you deploy IBM i database changes across your enterprise. Business applications can continue to access databases as usual while database management is taking place. Move the new files into production with only minutes of downtime.



With a legacy spanning more than four decades, ProData stands as a prominent industry leader in the development of IBM i utilities. As a trailblazer in utility development, ProData's flagship product, DBU, has gained global recognition with over 20,000 licenses sold worldwide.

- dodbu.com • sales@prodatacomputer.com • 800-228-6318

Application Development

DBU

DBU allows users to view and access all data on all systems using one interface. Instantly access information on logicals, enable security and audit logs or view and update multiple files. Access your data via green screen, Rational Developer for IBM i or web interface. DBU supports access to IBM i, MySQL, Oracle and other databases. Use DBU to analyze, access and secure data on all your servers and track any modifications made.

RDB Connect

RDB Connect empowers you to access data from multiple sources effortlessly, whether it's databases, FTP file servers, APIs, spreadsheets, cloud services or legacy systems. Developers will have robust APIs for integration and customization, rock-solid data security and lightning-fast transfers to help boost productivity across your organization. Whether you are in finance, healthcare or logistics, RDB Connect can adapt to any industry with a low-cost solution.

SQL/Pro

SQL/Pro provides the total package for all your in-house SQL software requirements. SQL/Pro users will benefit from improved interactive performance, SQL history, additional SQL statement prompting and multi-language support. Statements can be executed in batch or by interactively allowing output directed to a display, printer file or database file. Use SQL/Pro in conjunction with SQL/Audit to capture information about who executed the SQL, when it was done, what library/file it was run against and other pertinent information. Users can report all this information and use it to tailor their SQL statements and/or report these modifications as required by internal audits or compliance regulations.



Profound Logic takes you beyond modernization and into AI-enhanced futurization, empowering you to transition into the demands of tomorrow. For over 25 years, we've helped IBM i IT teams incrementally innovate and embrace the future with industry-leading solutions for natural language AI assistance, system transformation, API creation/management, application development and more. The future is flexible and built-in coexistence is standard with Profound Logic.

- profoundlogic.com • info@profoundlogic.com • 937-439-7925

AI

Profound AI

Unlock the transformative power of AI for your business with Profound Logic's cutting-edge AI solutions. Our comprehensive suite of AI-powered tools seamlessly integrates advanced technologies like machine learning and natural language processing into your existing systems, including IBM i applications, revolutionizing your operations and decision-making processes.

From conversational interactive agents to real-time data analytics that uncover hidden opportunities, our AI tools don't just enhance your business, they reimagine it.

APIs

Profound API

Shatter data silos and forge a seamlessly connected ecosystem with our game-changing integration solutions. Profound Logic's robust toolkit empowers your IBM i applications to communicate effortlessly with cutting-edge technologies, cloud services and third-party systems, creating a symphony of data flow across your entire organization. Whether you're implementing APIs, embracing microservices architecture or enabling real-time data synchronization, our integration prowess provides the flexibility and scalability to meet your most ambitious goals.

With Profound Logic's integration expertise, you're not just connecting systems, you're orchestrating a digital transformation.

Application Modernization

Profound AppEvo

Profound Logic's Transformation Services propel your legacy IBM i applications beyond mere modernization into true futurization. Our innovative approach seamlessly blends automated code conversion, flexible UI futurization and expert guidance to transform your RPG and COBOL applications into cutting-edge, open-source solutions. With our phased implementation and unmatched coexistence technology, you can transform at your own pace while eliminating business disruption. Experience increased agility, improved user experiences and enhanced integration capabilities, all while preserving your critical business logic.



Racksquared Data Centers offers everything from colocation to fully managed IT solutions for Intel and IBM Power. We specialize in providing colocation, cloud backup, disaster recovery, IBM Power in the cloud and IBM i administration services. Our customers gain access to technical expertise, the latest technologies and a secure, reliable, resilient environment for their IT systems. We become an extension of your team, managing, monitoring and supporting your infrastructure, so your business is always up and running.

- racksquared.com • sales@racksquared.com • 855-380-7225

Cloud and Hybrid Cloud

IBM Power in the Cloud Solutions

Stop buying and depreciating hardware. Deploy Racksquared's IBM Power in the Cloud. This solution provides you with access to IBM Power infrastructure custom configured with the resources (processor, memory and storage) you need. In addition, our administrators perform the day-to-day management of hardware and operating systems, handle PTF installs, manage backups and conduct a host of other tasks. With servers located in a secure, reliable and resilient data center, we keep your business up and running.

Intel Cloud Solutions

Our expertise isn't limited to IBM Power. We can also host your Intel infrastructure in our cloud. Utilizing VMware and SAN storage, we can configure a system with the processor, memory and storage you need to run your applications. Along with the resiliency of this platform, we also provide backup of your production data at our secondary data center. Our cloud solutions are designed to keep your business up and running.

HA/DR/Backup

IBM Power Cloud Backup Solutions

Still using physical tape to back up your IBM Power system? Racksquared's IBM Power Cloud Backup solution provides you with a digital solution for backing up your data offsite. By leveraging a virtual tape library, you can reduce downtime for performing backups and in the event of a disaster, experience faster recovery time. With your data stored in a secure, reliable and resilient data center, you can focus on your core business.

IBM Power Disaster Recovery Solutions

Do you have a disaster recovery plan for your IBM Power servers? Racksquared's IBM Power Disaster Recovery solutions are designed to give you peace of mind knowing that in a disaster situation you are prepared to recover. With reserved hardware, high availability and other solutions available, we can customize a solution that meets your recovery point and recovery time objectives. Add on annual testing and you can be confident that you are disaster-ready.

Managed Service Providers

IBM Power Colocation Solutions

When it comes to your environment, are you doing the best you can with what you have? Racksquared's IBM Power Colocation solution provides companies with a secure, reliable and resilient environment for their Power server. Our data centers are designed with redundant power, internet and systems, so you can be confident you won't experience any downtime. Once collocated, we can take over backup and administration services so you can focus on your core business.

Services Consulting

Managed IT Services

Your customers don't care about your IT infrastructure; however, most companies dedicate a significant amount of their IT resources to managing it. When you outsource the management of your IT systems, your team can focus on creating solutions that differentiate your business and deliver value for your customers. Let's talk about how Racksquared Data Centers can customize a fully managed IT solution to meet your business needs.

Systems Management

IBM Power Administration Services

The pool of available IBM Power experts is shrinking, while demand for this skill set remains strong. Racksquared's IBM Power administration services provide customers with access to a team of experienced admins for the day-to-day support, management and monitoring of your IBM Power environment. With your most critical business applications running on IBM Power, doesn't it make sense to have an expert managing it for you? Available for on-premises or cloud servers.



Raz-Lee’s flagship iSecurity suite protects against insider and outside threats, preventing unauthorized access to business-critical information. Raz-Lee is committed to providing comprehensive IBM i compliance, auditing and security solutions.

• razlee.com • marketing@razlee.com • 888-729-5332

Compliance

iSecurity Antivirus

iSecurity Antivirus scans all accessed files, offers comprehensive virus detection by marking, quarantining and deleting infected files, and prevents your IBM i from becoming an infection source.

iSecurity AP-Journal

By providing a timeline report of all changes relating to application data, iSecurity AP-Journal reduces unauthorized activity and enables users to meet regulatory requirements.

iSecurity Audit

iSecurity Audit examines events in real time, triggering alerts and other responsive actions to potential threats. New GUI features provide a user-friendly interface for working with the large, often confusing number of system values and parameters.

Cybersecurity

iSecurity Anti-Ransomware

iSecurity Anti-Ransomware quickly detects high-volume cyber threats deployed from an external source, isolates the threat and prevents it from damaging valuable data.

iSecurity Firewall

iSecurity Firewall is a comprehensive, all-inclusive intrusion prevention system that secures every type of internal and external access to the IBM i server. It enables you to easily detect remote network accesses and, most importantly, implement real-time alerts.

Database

iSecurity DB-Gate

iSecurity DB-Gate empowers IBM i customers with exciting data access capabilities, based on Open Database Connectivity, employing standard IBM i facilities to enable fully database-transparent access to remote systems. Using native SQL on the IBM i, users can connect to specific files on Db2 and non-Db2 remote databases without any special hardware or software on the remote database.

Multifactor Authentication

iSecurity MFA

iSecurity MFA works with every authenticator app available in the market. We use any token generator—Radius, PingID, Okta and even Google Authenticator—on a mobile phone or by any hardware device. Freedom is part of our multifactor authentication.

PRODUCTS



Remain Software is a leading provider of DevOps and application lifecycle management solutions with over 30 years of experience. We deliver innovative, high-quality tools that adapt to our customers' evolving needs. Our latest advancement, Octo, is a web-based platform that extends our flagship TD/OMS. A global team of experts and partners ensures multilingual service and support.

• remainsoftware.com • info@remainsoftware.com • 757-550-1560

Application Development

Octo

The next-generation orchestration framework that brings the full power of TD/OMS into a modern, visual environment. Designed for both the web and Visual Studio Code, Octo acts as a central hub for managing and visualizing development and operations activities in an intuitive experience.

Remain API Studio

Remain API Studio is a powerful, intuitive environment for creating, building, managing and testing REST APIs. Its visual editor, import/export options, and built-in documentation ensure efficient, compliant APIs. API Studio integrates seamlessly with TD/OMS, our DevOps platform, enabling you to track API changes, manage lifecycles and keep all components current across platforms.

TD/OMS

TD/OMS is a flexible, cost-effective DevOps solution that provides real-time visibility into application components, dependencies and configurations. It helps identify and resolve issues before they cause disruptions, while improving collaboration, productivity and delivery speed. With TD/OMS, teams deliver software faster, with fewer risks and greater confidence.

Tools and Utilities

XREF

XREF, included in TD/OMS, helps you identify and troubleshoot issues caused by unknown dependencies. With its intuitive interface and powerful search capabilities, XREF enhances collaboration and productivity across teams, strengthening the Remain Software DevOps platform.



SAFE DEVOPS WITH TD/OMS

Remain Software delivers innovative DevOps and Software Lifecycle solutions for IBM i. Enjoy an exceptional developer experience on the web or directly in VSCode. From the initial requirement to deployment in production, Remain covers the entire Software Lifecycle with flexibility, reliability, and control.



Ready to evolve? We'll guide your DevOps transformation

Remain Software Inc.
130 W. Plume Street Unit C, Norfolk, VA 23510
United States
usa.office@remainsoftware.com
Tel: 757-550-1560

Remain Software Head office
Remain B.V. Dukatenburg 82b 3437 AE
Nieuwegein, The Netherlands
info@remainsoftware.com
Tel: +31 (0) 30-6005010



Service Express is a global, trusted leader in data center solutions, delivering managed services, cloud hosting, multivendor maintenance and more. As an experienced IBM Business Partner, we help IBM Power customers running IBM i and AIX maximize their investment while keeping critical data available and secure. Organizations can rely on Service Express to strengthen their IT strategy, keep systems running at peak performance and provide flexible solutions tailored to their data center needs.

- serviceexpress.com • IBMSales@serviceexpress.com • 800-940-5585

Cloud and Hybrid Cloud

Infrastructure as a Service

Rapidly scale workloads based on your needs without the upfront costs and additional resources required to own and maintain physical infrastructure. Our extensive range of fully managed services includes IBM Power IaaS, X86 IaaS, cloud management, containers and generative AIaaS. Our solutions are designed to provide scalability, reliability and security for your entire IT landscape. We enable you to prioritize what matters most to your organization.

HA/DR/Backup

Managed Backup and Recovery Services

Keep your data secure and accessible when you need it the most with our proactive backup and recovery services. We offer managed backups, high availability, disaster recovery, virtual tape libraries and more. Immutable data and isolated recovery environments give you ransomware protection through fast, automatic recovery of your production environments. Rest easy knowing our expert team is here to deliver solutions that keep your business running—no matter what.

Hardware

IBM Power and Storage

Our team has the expertise to configure, install and implement your IBM Power servers, HMC, LPAR configurations and storage solutions. With years of experience and knowledge, we understand a wide range of IBM i applications to enhance usability and operability in your data center. Our consultative approach delivers customized hardware solutions that fit your business goals and long-term investments.

Managed Service Providers

Managed Operating Systems

Stay up to date with the latest IBM OS, schedule maintenance and get proactive support. Our experienced system administrators know compatibility requirements, address risk and implement testing to ensure a successful upgrade. While OS upgrades can take weeks of preparation and planning to run smoothly, we take away the stress and make the process as easy as possible for you.



Established in 1982, Software Engineering of America (SEA) is a worldwide provider of IBM i optimization, cybersecurity and monitoring solutions. SEA's customers include nine of the Fortune 10 and over 90% of the Fortune 500.

SEA provides IBM i security and monitoring solutions including multifactor authentication, anti-ransomware, anti-virus, audit and compliance reporting, self-service password reset, encryption, exit point monitoring, system message and resource monitoring and more.

- seasoft.com • info@seasoft.com • 516-328-7000

Security

iSecurity Multi Factor Authentication (MFA)

iSecurity Multi Factor Authentication (MFA) is a powerful solution that secures IBM i sign-ons.

iSecurity MFA requires users to verify their identities with two or more authorization methods before gaining access to IBM i servers and data, improving overall security and satisfying many governmental, regulatory and insurance requirements.

iSecurity MFA is a pure IBM i-based solution that runs directly on IBM i servers.

iSecurity Suite: End-to-End Security for IBM i

iSecurity is a comprehensive, user-friendly solution for security, auditing, compliance and reporting in the IBM i environment.

The iSecurity suite provides end-to-end security for IBM i systems including solutions for multifactor authentication, anti-ransomware, anti-virus, audit and compliance reporting, self-service password reset, encryption, exit point monitoring and more.

iSecurity ensures effortless compliance with mandatory security regulations and auditor requirements, offering hundreds of pre-built security reports to meet today's regulatory and auditing standards.

Systems Management

absMessage: IBM i Message and Resource Monitoring

absMessage is a comprehensive IBM i message and resource monitoring solution that centralizes and automates resource monitoring across the IBM i environment. Responders are alerted in real time when events occur and automations can help to resolve events without hands-on involvement from IT. IBM i-specific ServiceNow tickets can also be generated from monitored events.

absMessage is accessible through multiple interfaces including Web UI, 5250 green screens as well as a Java-based GUI.



TL Ashford develops world-class bar code labeling and forms software for the IBM i to meet ever-changing market demands associated with the bar code industry. Since 1983, TL Ashford has built a substantial client roster, based on a steadfast commitment to customer service and an unwavering passion for customer satisfaction. Our entire support staff is located in the greater Cincinnati/northern Kentucky region, with an average of 22 years of experience supporting Barcode400 and TLAForms. No matter what TL Ashford product you are using, our goal never changes: 100% customer satisfaction.

• tlashford.com • sales@tlashford.com • 800-541-4893

Barcode

Barcode400

Barcode400 is a powerful design tool to create labels on IBM i. Add text, bar codes, including 2-D bar codes, images and more while utilizing data directly from your IBM i files and applications. Labels can be printed to hundreds of thermal transfer printers as well as HP and compatible models, and generate labels as PDF documents. Barcode400 has been integrated with nearly every ERP and WMS application software on IBM i, as well as thousands of in-house-written applications. We also provide compliance labels at no additional charge for more than 500 companies in automotive, retail, healthcare and more.

Document Management

TLAForms

Transform IBM i spool files into full-color, professional documents effortlessly—no programming required. TLAForms makes managing forms simple with an intuitive interface, saving time and eliminating the steep learning curve of complex alternatives. Easily add bar codes, vibrant images, logos and MICR fonts for checks, then print to any printer (no IPDS needed) or generate PDFs for seamless email and archiving. Try it free and experience the simplicity—call 800-541-4893 today!

TLAForms: The Smarter Way to Create and Manage Forms on IBM i

In today's fast-moving business environment, efficiency and reliability are paramount. For companies running IBM i, managing forms can be complex, time-consuming and expensive. That's where TLAForms by TL Ashford comes in—a powerful, user-friendly solution to streamline document creation, management and distribution.

WHAT MAKES TLAFORMS DIFFERENT

TLAForms is used to transform standard IBM i spool files into professional forms, checks and other business documents. Designed specifically for IBM i, it streamlines form creation and automates delivery—no programming required. TLAForms eliminates the need for pre-printed forms and expensive printers and is a more flexible and cost-effective approach than AFP.

1. Easy Design and Customization

The intuitive drag-and-drop TLAForms designer lets you create forms with logos, barcodes, images and signatures in minutes. Even non-technical users can design polished documents with ease.

2. Access IBM i Spool Data and File Data Using SQL

Easily map IBM i spool file data and use SQL to access IBM i File Data to create dynamic, custom forms.

3. Effortless Output and Delivery

Generate PDFs, email them automatically or print forms to any IBM i-, network- or Windows-connected printer. No coding required!

4. Seamless Integration

TLAForms integrates directly with your existing IBM i applications. It monitors for spool files to be generated and processes forms automatically, saving time and technical resources.

THE BENEFITS

Save Money: Eliminate pre-printed forms and use inexpensive laser printers instead.

Increase Efficiency: Create and generate forms more easily. Free up technical staff to utilize on other projects.

Enhance Quality: Create professional, high-impact documents that elevate your brand.

Simplify Integration: Because TLAForms integrates directly with IBM i applications with no programming, businesses can enhance their operations without disrupting established workflows.

WHY TL ASHFORD

For 43 years, TL Ashford has been a trusted leader in IBM i labeling and forms solutions. With exceptional support and proven reliability, TL Ashford delivers software that works as hard as you do.

Ready to modernize your IBM i forms?

Visit TLAshford.com to request your free TLAForms trial and see the TL Ashford difference. ■



MIKE SCHUETT

DIRECTOR OF MARKETING
MIKES@TLASHFORD.COM

Mike Schuett has spent 32 years at TL Ashford serving the IBM i community. From technical support to sales and marketing, he's spent thousands of hours working with IBM i users to become more productive with forms and labels.





Vanguard Integrity Professionals is the largest independent provider of enterprise security software for addressing complex security and regulatory compliance challenges.

Founded in 1986, Vanguard continues to innovate and expand its portfolio of hardened cybersecurity solutions and services while offering a range of options designed to help organizations secure their enterprise environments, including security assessment and compliance services, security software solutions, migration services, managed services, training and support that recognizes the critical environment.

- go2vanguard.com • info@go2vanguard.com • 702-794-0014

Compliance

Vanguard Compliance Manager for IBM i (VCMi)

VCMi helps organizations enforce the Center for Internet Security (CIS) standards on IBM i systems, providing a robust baseline of cybersecurity best practices. The tool automates the audit and compliance process, saving time and improving report accuracy, while also producing automated vulnerability assessments to prepare for rigorous audits. VCMi isn't just a compliance tool; it's designed to automate foundational security requirements on IBM i.

Key benefits of VCMi:

- Security: Exceeds product standards by meeting high security demands
- Compliance: Performs critical compliance checks to adhere to industry-specific regulations
- Audit: Easy-to-use with immediate results for audit requirements
- Single-pane view: Automatically generated results

With VCMi, organizations can maintain compliance with regulations while shifting their resources back to higher-value tasks.



Xorux is an independent company that develops performance monitoring and reporting tools. Their primary products are designed to provide free and open-source solutions for monitoring virtualized server infrastructure, storage systems and networks. Xorux simplifies IT administration by offering a unified view of complex environments, helping businesses proactively identify issues and optimize performance across a wide range of technologies.

- xorux.com • info@xorux.com • 770-712-9887

Performance and Capacity Planning

XorMon for IBM i

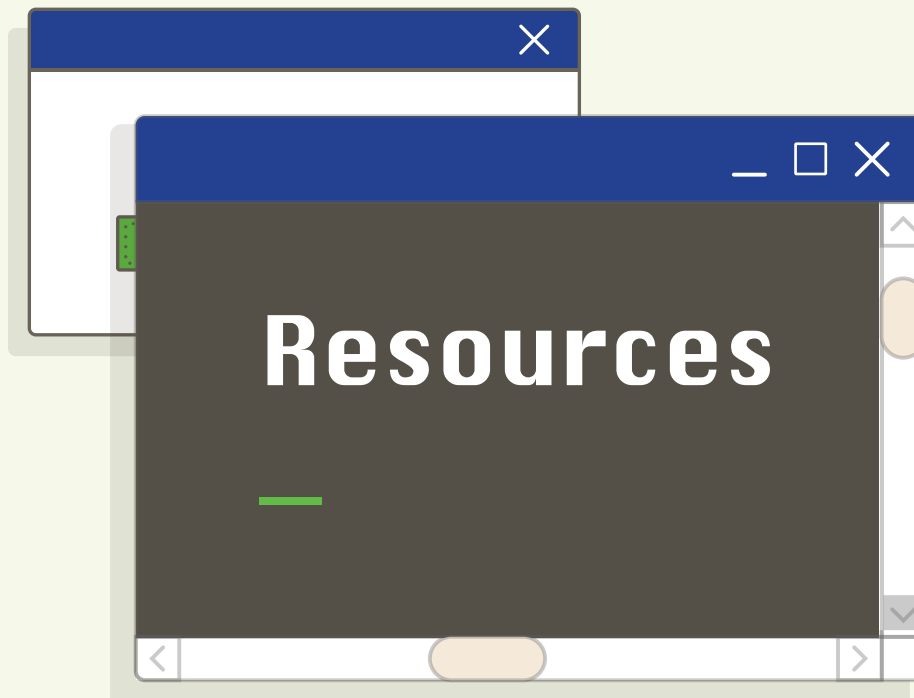
XorMon provides proactive monitoring for your IBM i environment. It offers performance insights, tracks LPARs and monitors critical resources like ASPs. The solution includes a dedicated IBM i agent for detailed metrics, helping you analyze trends and optimize performance.

XorMon for Server Infrastructure

XorMon is a full-stack performance monitoring tool for your entire IT infrastructure. It unifies monitoring for servers, cloud, containers and databases, giving you a comprehensive view from a single pane of glass. It supports a wide range of technologies, including IBM Power servers, VMware and Kubernetes etc.

XorMon for Storage

XorMon specializes in performance and capacity monitoring for storage, SAN and LAN devices. It gives you a clear understanding of storage utilization and provides detailed SAN topology views. The tool simplifies troubleshooting and helps you make informed decisions for storage optimization and future planning.



Change is a constant in the IT world, making continuous learning and growth essential. Keeping pace with evolving technology can be tough, but local user groups make it easier by creating spaces where professionals can connect, learn and collaborate.

These groups offer a wide range of activities, from conferences and student events to virtual meetings and competitions. They help sustain the IBM i platform, foster innovation and strengthen the IBM Power community through shared knowledge and experiences.

Curious about what's happening near you? Explore these active regional user groups to discover events, opportunities and connections in your area!

Canada

Ontario (Toronto)—Toronto Users Group

tug.ca / admin@tug.ca

The Toronto Users Group's purpose is to provide a professional forum for presentations and exchange the ideas that pertain to IBM Power computers and related subjects, from the technical management and end-user perspectives. Meetings alternate between in-person (bimonthly) and Zoom sessions.

Europe

COMMON Europe

comeur.org / office@commoneur.org

COMMON Europe connects IBM Power and IBM i professionals across the community. Join the annual Common Europe Congress (CEC) to network with experts, share knowledge and explore the latest in technology. Participate in webinars and other events to engage, learn and exchange best practices. Members of any COMMON Europe country user group gain automatic membership and access to these opportunities. Connect, learn and grow with COMMON Europe!

United States

California (Orange County)—Orange County Educational Advancement Network (OCEAN)

ougsc.memberclicks.net / info@oceanusergroup.org

OCEAN, the largest IBM Power Systems and IBM i user group in the Western U.S., is a nonprofit run by volunteers. It offers affordable, cutting-edge education for IT professionals through monthly webinars, a renowned annual Technical Conference and Vendor Expo, and other educational events. OCEAN covers diverse topics including AI, modern programming languages, IBM i OS and tools, IBM hardware and IT management, thereby helping professionals build valuable skills. OCEAN's mission is to foster learning and networking in Southern California's tech community. Join OCEAN to elevate your career and engage with industry leaders!

COMMON User Group

www.common.org / support@common.org / 800-777-6734

COMMON, the largest IT association for IBM technologies, has empowered professionals since 1960. It connects a vibrant community of users, partners and experts through leadership, advocacy and education. Members enjoy access to a 24-7 content library, virtual learning, certifications and globally recognized conferences that offer tailored sessions and networking opportunities. With insightful publications and a platform for collaboration, COMMON keeps members informed and ahead in their careers.

IBM i Midwest User Group (iMWUG)

info.briteskies.com/midwestusergroup / iMWUG@briteskies.com / 216-369-3600

The IBM i Midwest User Group (iMWUG) is a dynamic new user group fostering education on all aspects of IBM i combined with ERP, with a mission to promote the use of this powerful platform and enrich the user experience. When you join iMWUG, you'll join a vibrant and inclusive community dedicated to educating and sharing knowledge about the IBM i platform. With free membership, you'll gain access to virtual bimonthly meeting and webinar sessions with industry experts, education on new technology and networking opportunities within a community of like-minded IBM i professionals.

LUG (Large User Group)

ibmilug.ihost.com / Director of Operations and COO: Lynne Benedict, lbenedict@the-lug.com / 507-533-8035 / 507-250-2788

LUG (Large User Group) was formed in 1994, incorporated in Minnesota in 1999 and has been going strong ever since. LUG consists of 80 large companies that have a significant investment in IBM i, with members using more than 500 million CPW. Recognized leaders in their industries, member companies are present in finance, manufacturing, insurance, retail, petroleum and media. At LUG meetings, there are dozens of presentations, breakout sessions and opportunities for dialogue. Each meeting includes in-depth, technical, and strategic presentations on varied topics members are interested in, excluding marketing and sales. Working meetings are held three times per year at the IBM offices in Rochester, Minnesota, the birthplace of the IBM i.

Michigan (Grand Rapids)—West Michigan IBM i Users Group

msug.net / Chairperson: Chris Van Liere, 269-660-7777 ext. 7876 / chairperson@wmsug.net / Program Director: Leo Whitaker, Jr., 616-530-6600 / ProgramDirector@wmsug.net / Webmaster, Treasurer, Secretary: Scott A. Smith / administrator@wmsug.net

West Michigan IBM i User Group (WMSUG) is a nonprofit group offering IBM i education for CIOs, IT managers and developers. Meetings run monthly (September through May), covering timely topics for business success with the platform.

Michigan IBM i Power Systems Technical Education Conference (MITEC)

gomitec.com / info@consultechservicesinc.com / 248-628-6800

The Michigan IBM i Power Systems Technical Education Conference (MITEC) 2026 invites you to elevate your tech expertise this June. Held at the VisTaTech Center, Schoolcraft College in Livonia, Michigan, this power-packed day

features 40+ sessions led by industry experts, unrivaled networking opportunities and world-class presenters. Customize your schedule with a range of topics to maximize your learning, all at an affordable cost to keep your company ahead in technology. Don't miss this chance to grow your knowledge and connections—mark your calendar now!

Michigan (Rochester)—Southeast Michigan iSeries Users Group

semiug.org / info@consultechservicesinc.com

The Southeast Michigan IBM i User Group's mission is to provide a forum for IBM i users to gain new skills, stay informed about upcoming changes on the platform and network with other IBM i professionals. Meetings take place monthly September through June (excluding December). Many of the speakers at the user group's meetings are current or former IBM i experts who have a vast wealth of knowledge to share with the attendees.

Mid-Atlantic Group of IBM i Collaborators

magic-ug.org / admin@magic-ug.org

The Mid-Atlantic Group of IBM i Collaborators (MAGiC) was founded to provide a place to collaborate and to learn new IBM i skills from industry experts and share ideas with other members. MAGiC provides informative monthly online sessions, an annual two-day workshop focused on open source and an annual conference. MAGiC has become a great resource for IBM i professionals to gain valuable insights and training from knowledgeable industry experts, designed to help us shift our thinking and approaches from reactive to proactive, from status quo to visionary, from keeping up with the industry to leading from within it.

Minnesota (St. Paul)—QUSER

quser.org / QUSER, P.O. Box 40062, Saint Paul, MN 55104

QUSER connects IBM i users through networking, idea-sharing and expert-led knowledge sessions. Becoming a member allows for access to additional support provided by IBM, COMMON and other corporate sponsors, all of which are committed to the success of QUSER Group. These sponsors provide special guest speakers contribute to education funding and provide discounts to attend the popular conferences.

New York – Long Island Systems Users Group (LISUG)

lisug.org / President: Chris Gomez, chris.gomez@pcrichard.com / Vice President: Steve Wolk, swolk@pcrichard.com

The Long Island System User Group (LISUG) is a leading professional community for IBM i and IBM Power professionals in the New York metro area. Since 1984, LISUG has brought together IT professionals to share real-world experiences, provide world-class education and promote career growth. Our monthly dinner meetings offer high-value education and relaxed networking with peers and industry experts. LISUG also hosts Horizons, our annual conference focused on actionable uses of AI, and Night of 1000 Stars, our popular year-end holiday showcase. Whether you are new to the platform or an expert, LISUG offers a local community that helps you stay current and bring more value back to your organization.

Northeast User Group Conference

www.neugc.org / registration@neugc.org or vendors@neugc.org

The Northeast User Group Conference (NEUGC) unites IBM Power user groups from Connecticut, Maine, Massachusetts, New Hampshire, Rhode Island and Vermont to host an annual technical conference in Leominster, Massachusetts. Held April 7–9, 2026, the 34th annual conference will consist of 50+ sessions, expert speakers and extensive vendor exhibits. NEUGC provides a valuable, affordable experience for attendees while helping the IBM Power community adapt to the rapid pace of technological change. Join NEUGC to connect, learn and grow with peers and industry leaders!

Tennessee (Nashville)—IMUG Midrange Users Group

imugtn.org / 270-885-9011

IBM Midrange User Group (IMUG) is an organization serving the IBM Power community in Nashville and its surrounding areas. Members can meet in person or attend the video conference online for each monthly meeting. Membership connects you to presentations from a network of industry leaders and a supportive community of local IT experts.

Central Texas IBM i User Group

ctxiug.blogspot.com / President: Simon Hutchinson, rpgpgm.com@gmail.com

The Central Texas IBM i User Group (CTXiUG) is a community of passionate technology experts focused on sharing knowledge about IBM i and everything related to it. No topic is too unique or niche for CTXiUG. The group was founded in 2020 and is always looking for members in central Texas, including metropolitan Austin and San Antonio areas. The user group meets every other month and has successfully brought a host of IBM champions and other accomplished people in the IBM i community to present exciting new ideas to the group. Each meeting is accessible online to anyone who registers.

Wisconsin (Elm Grove)—Wisconsin Midrange Computer Professional Association

wmcpa.org / President: Marina Schwenk, president@wmcpa.org

The Wisconsin Midrange Computer Professional Association (WMCPA) connects members to exchange knowledge about midrange systems. It hosts monthly dinner meetings featuring guest speakers and a two-day Spring Technical Conference every March. Membership is open to anyone using or supporting midrange systems like IBM i or involved in related software and hardware development.

AI

Profound Logic29
– Profound AI

APIS

Midrange Dynamics North America27
– MDRest4i

Profound Logic29
– Profound API

APPLICATION DEVELOPMENT

CNX..... 11
– Fusion5250
– Nitro App Builder
– Valence

Midrange Dynamics North America27
– MDChange

Remain Software34
– Octo
– Remain API Studio
– TD/OMS

ProData.....28
– DBU
– RDB Connect
– SQL/Pro

APPLICATION MODERNIZATION

CM First10
– CM evolveIT metaTX-AI for IBM i
– Managed Application Services

Integrative Systems20
– IBM i Application Modernization

Profound Logic29
– Profound AppEvo

APPLICATION TESTING

Midrange Dynamics North America27
– MDTest

BARCODE

TL Ashford.....38
– Barcode400

BUSINESS INTELLIGENCE AND ANALYTICS

Fortra.....16
– Business Intelligence

Integrative Systems20
– Data Management & Analytics

BUSINESS MANAGEMENT

HarrisData.....18
– AppsInHD HRIS
– HarrisData ERP
– HarrisData Financials

CLOUD AND HYBRID CLOUD

CloudFirst9
– Managed Cloud Hosting

Lightedge.....22
– IBM on-net with AWS
– IBM on-net with Azure
– IBM Power Cloud

Racksquared Data Centers30
– IBM Power in the Cloud Solutions
– Intel Cloud Solutions

Service Express36
– Infrastructure as a Service

COMPLIANCE

Vanguard Integrity Professionals40
 – Vanguard Compliance Manager for IBM i (VCMi)

Raz-Lee Security32
 – iSecurity Antivirus
 – iSecurity AP-Journal
 – iSecurity Audit

Fortra.....16
 – Auditing and Compliance Reporting

CYBERSECURITY

Fortra.....16
 – Intrusion Detection and Prevention
 – Identity and Access Management

Raz-Lee Security32
 – iSecurity Anti-Ransomware
 – iSecurity Firewall

DATABASE

Midrange Dynamics North America27
 – MDRapid

Raz-Lee Security32
 – iSecurity DB-Gate

DATA MANAGEMENT

Maxava25
 – Maxava Monitor Mi8

DOCUMENT MANAGEMENT

TL Ashford.....38
 – TLAForms

EDUCATION

imPower Technologies.....19
 – Online Course: IBM i Concepts and Operations
 – Online Course: Programming in ILE RPG
 – Online Workshop: RPG Evolution: Modular Mastery with Modern Tools
 – Online Workshop: SQL Queries
 – Online Workshop: { RESTful APIs } on IBM i

HA/DR/BACKUP

Cobalt Iron.....12
 – Cobalt Iron Compass

Fortra.....16
 – HA/DR (High Availability/Disaster Recovery)

Lightedge.....22
 – IBM DRaaS, High Availability & BaaS

Maxava25
 – Maxava HA Enterprise+

Racksquared Data Centers30
 – IBM Power Cloud Backup Solutions
 – IBM Power Disaster Recovery Solutions

Service Express36
 – Managed Backup and Recovery Services

HARDWARE

Service Express36
 – IBM Power and Storage

IT INFRASTRUCTURE

Integrative Systems20
 – 24*7 IT Infrastructure Support

MANAGED SERVICE PROVIDERS

CloudFirst 9
 – Managed Services

Lightedge.....22
 – IBM i Management
 – AIX Management

Racksquared Data Centers30
 – IBM Power Colocation Solutions

Service Express36
 – Managed Operating Systems

MIGRATION

Lightedge.....22
 – IBM Migration

MODERNIZATION

CloudFirst 9
 – Modernization & Innovation

MULTIFACTOR AUTHENTICATION

Raz-Lee Security32
 – iSecurity MFA

OFFICE AUTOMATION AND OFFICE SUPPORT

Computer Keys.....14
 – KeyesFax
 – KeyesMail
 – KeyesOverlay
 – KeyesPDF

DRV Technologies15
 – FormFlex
 – SpoolFlex

PERFORMANCE AND CAPACITY PLANNING

Fortra.....16
 – Performance Monitoring and Planning

Xorux41
 – XorMon for IBM i
 – XorMon for Server Infrastructure
 – XorMon for Storage

SECURITY

Maxava25
 – Maxava Security

Software Engineering of America37
 – iSecurity Multi Factor Authentication (MFA)
 – iSecurity Suite: End-to-End Security for IBM i

SERVICES CONSULTING

Racksquared Data Centers30
 – Managed IT Services

SYSTEMS MANAGEMENT

DRV Technologies15
 – MessageFlex

Fortra.....16
 – Automation

M81.....24
 – Flash for i

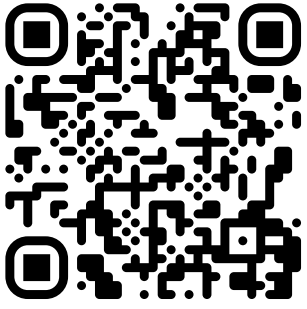
Racksquared Data Centers30
 – IBM Power Administration Services

Software Engineering of America37
 – absMessage: IBM i Message and Resource Monitoring

TOOLS AND UTILITIES

M81.....24
 – Control for i

Remain Software34
 – XREF



TechChannel

2026

SO DI



Americas
+1 215 798 1521
nala.sales@maxava.com

Europe, Middle East, Africa
+44 345 557 5705
emea.sales@maxava.com

Asia, Pacific, Australia, New Zealand
+64 4 801 0140
ap.sales@maxava.com

Japan
+64 9 414 5172
japan.sales@maxava.com